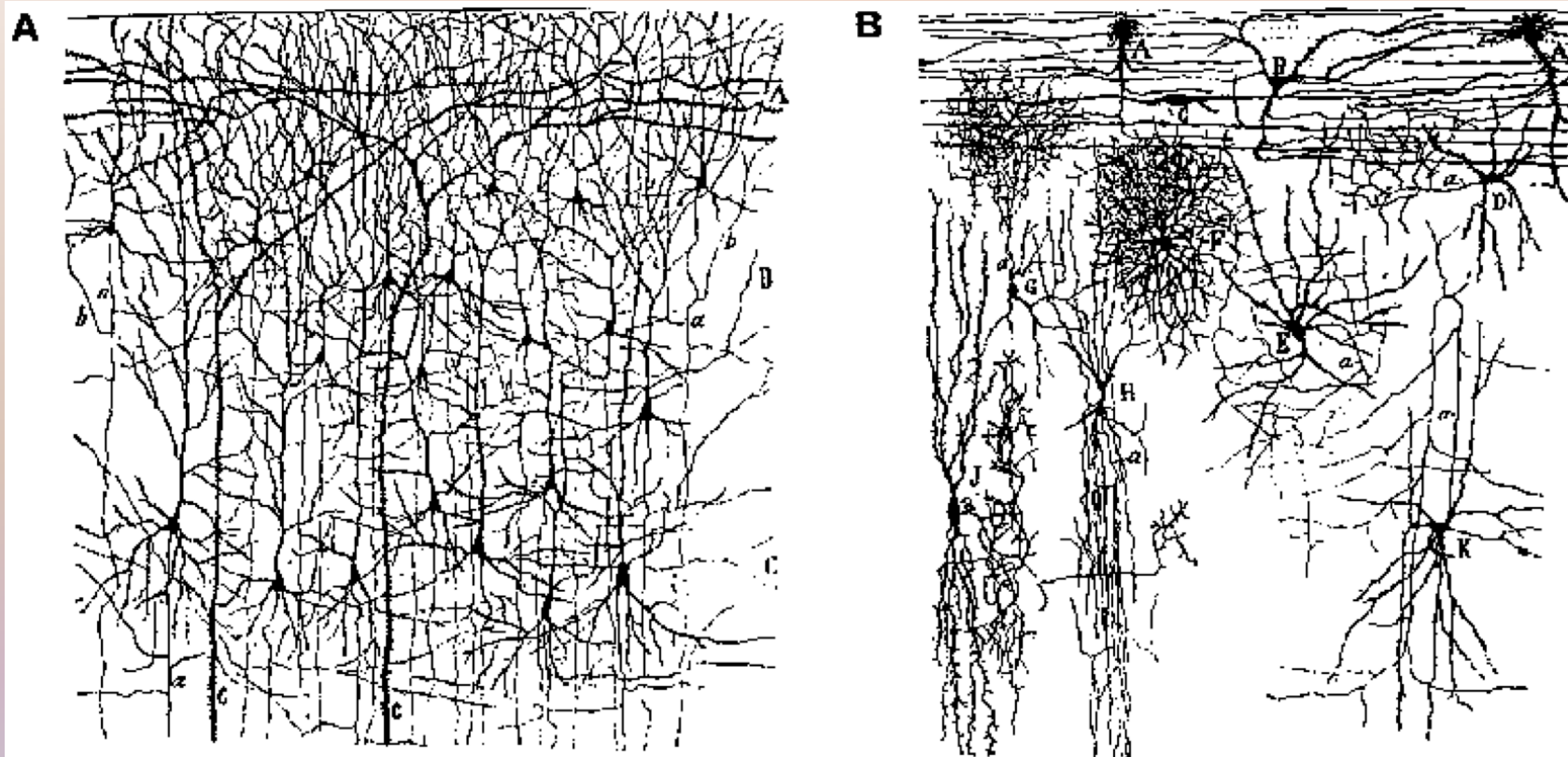


3. Networks

Networks

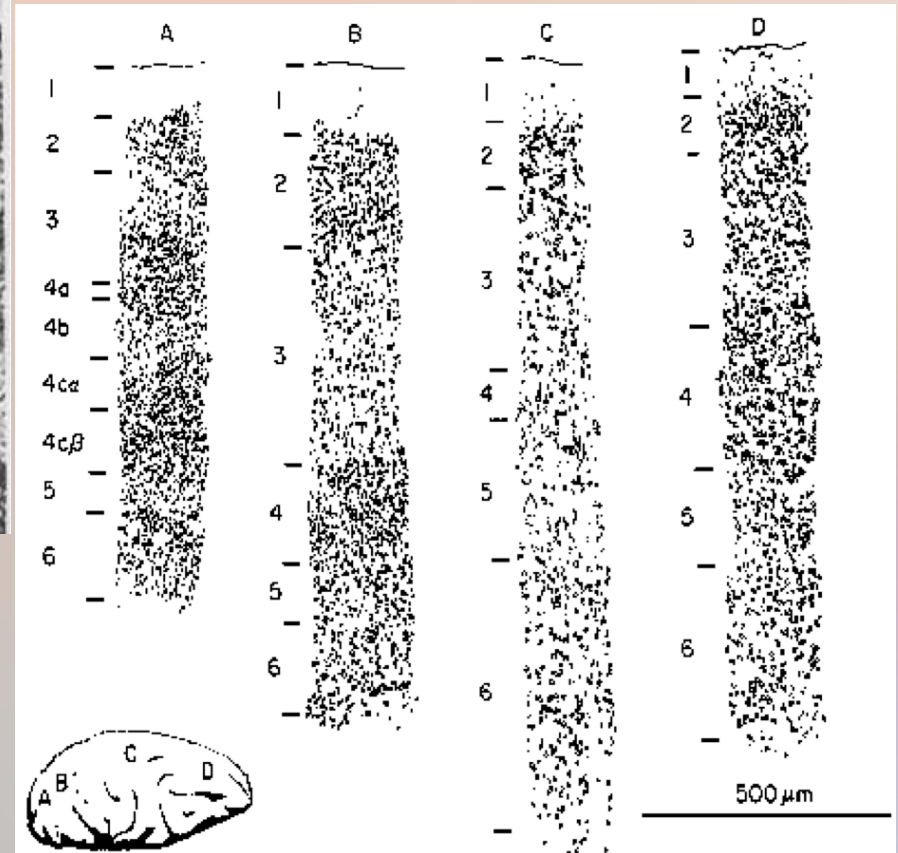
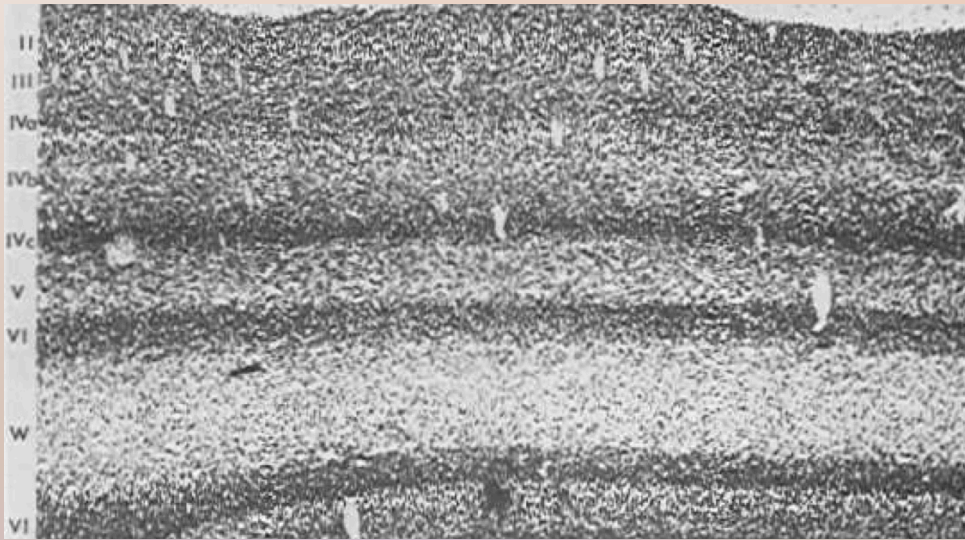
1. Biology of Neocortex (“cortex”)
2. Categorization and Distributed Reprs
3. Bidirectional Excitation and Attractors
4. Inhibitory Competition and Activity Regulation

Neurons: Excitatory and Inhibitory



Excitatory = main info processing, long-range connections
Inhibitory = local, activity regulation and competition

The 6 Cortical Layers



(slide < O'Reilly)

COSC 494/594 CCN

Functions of Layers

Input

layer 4

from sensation or other areas

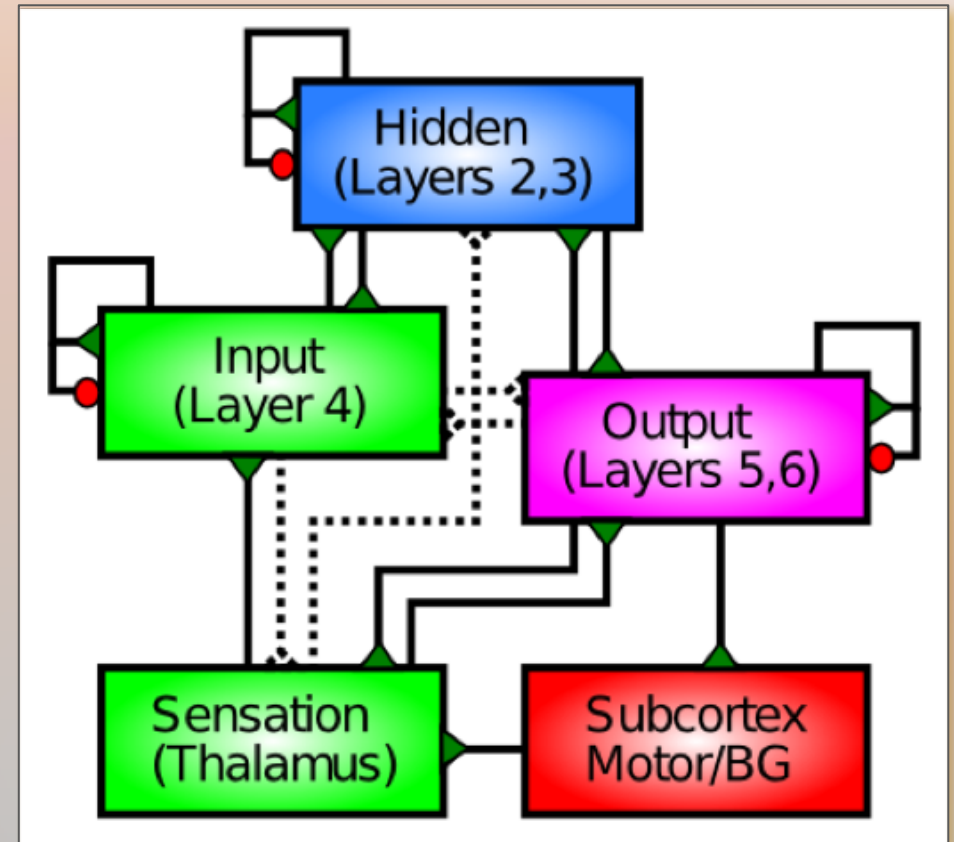
Hidden

layers 2 & 3

Output

layers 5 & 6

to motor systems or other areas



(fig. < O'Reilly, *Comp. Cog. Neurosci.*)

Connection Directions

Feedforward

- from Hidden in lower to Input in higher

Feedback

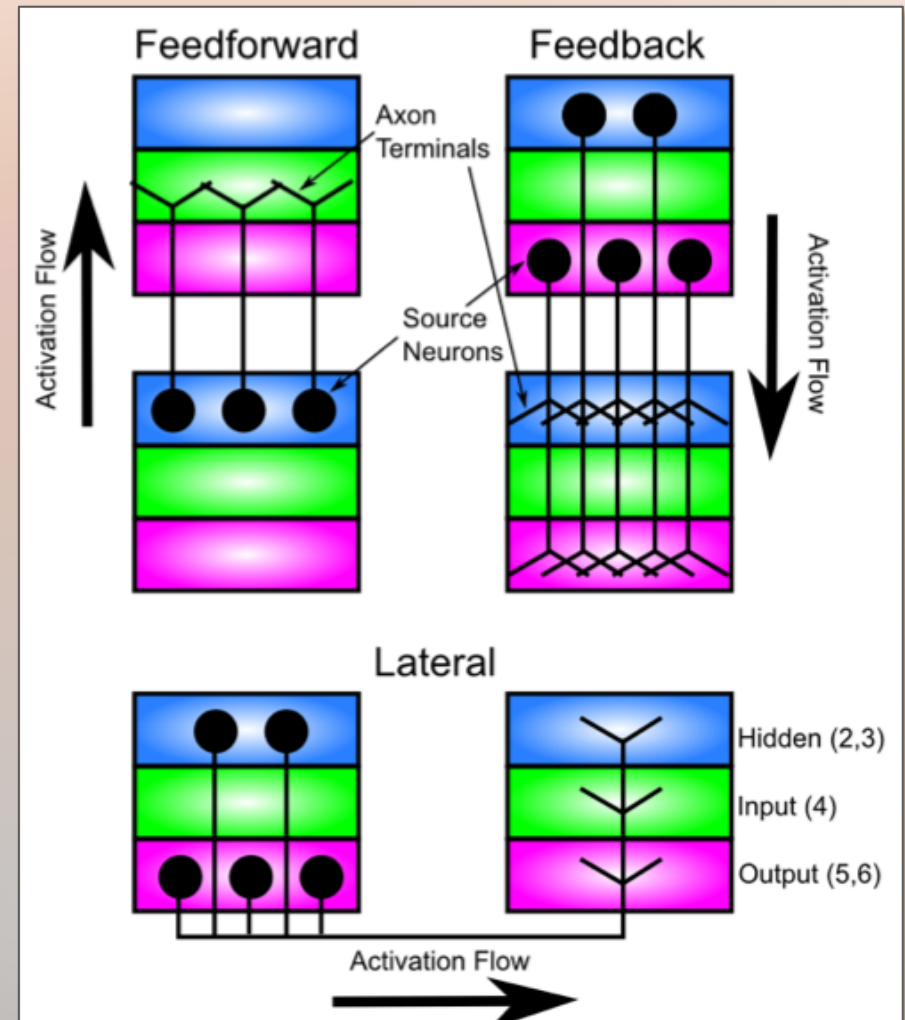
- from Hidden & Output in higher to Hidden & Output in lower

Lateral

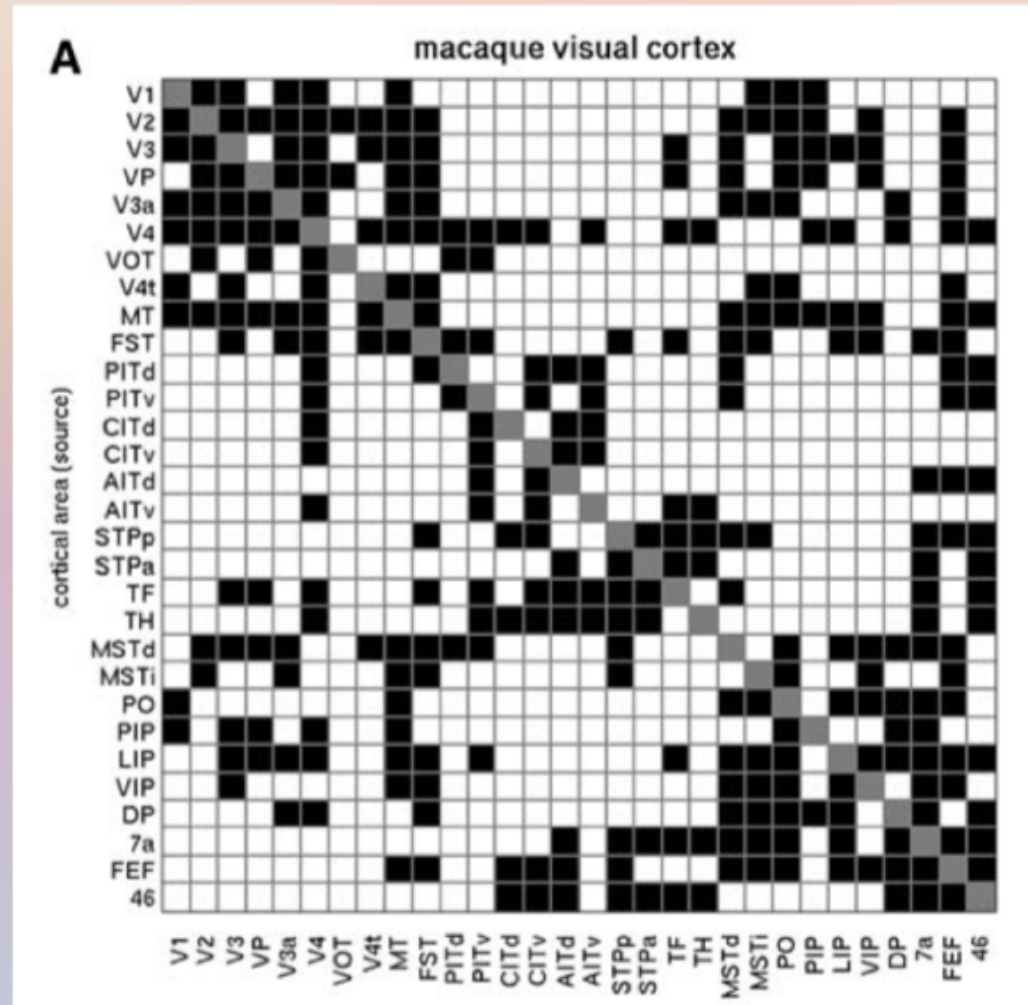
- from Hidden and Output to all three layers in same area

Bidirectionality

- pervasive



Bidirectional Symmetry



(slide < O'Reilly)

COSC 494/594 CCN

Biology \Rightarrow Function

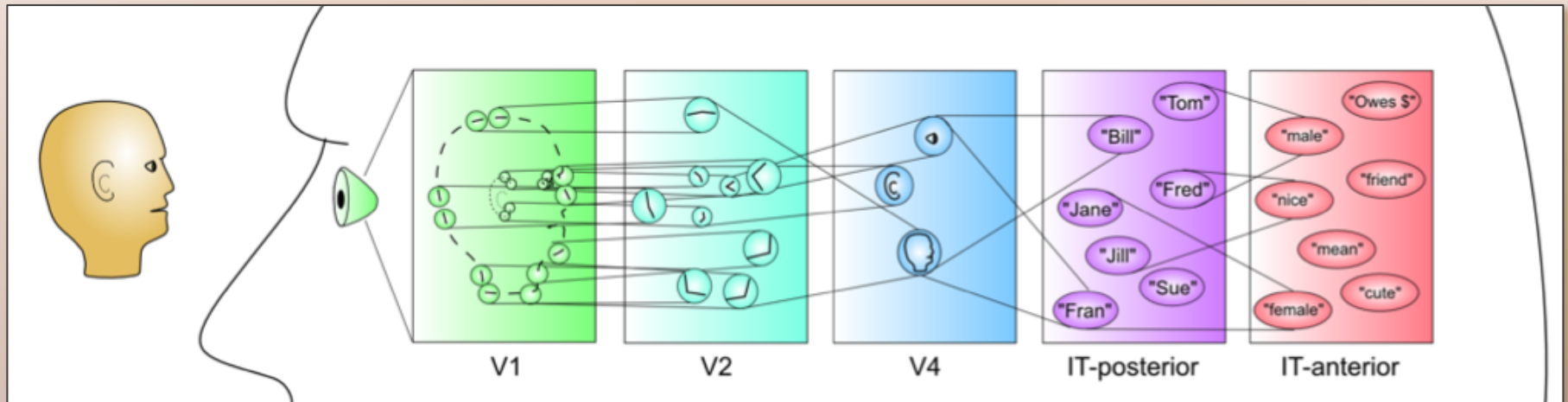
- Feedforward excitation = categorization of inputs
 - larger patterns, more invariant w.r.t instances & space
- Feedback excitation = attractor dynamics
 - ambiguity resolution & constraint satisfaction
- Lateral inhibition = competition, activity regulation
 - sharpens response

Ambiguity Resolution



COSC 494/594 CCN
(fig. < O'Reilly, *Comp. Cog. Neurosci.*)

Hierarchical Categorical Representations



- Successive layers of neural detectors
- Progressively more abstract

Getting the right representation is key

- Two men are dead in a cabin in the woods.
- The cabin itself is not burned, but the forest all around is burned to cinders.
- How did the men die?

The Chair Category

How would you define “chair”?

Socrates asks, “what is that common quality, which is the same in all these cases, and which is called courage?” (*Laches* 191e)



(slide based on O'Reilly)

COSC 494/594 CCN

12

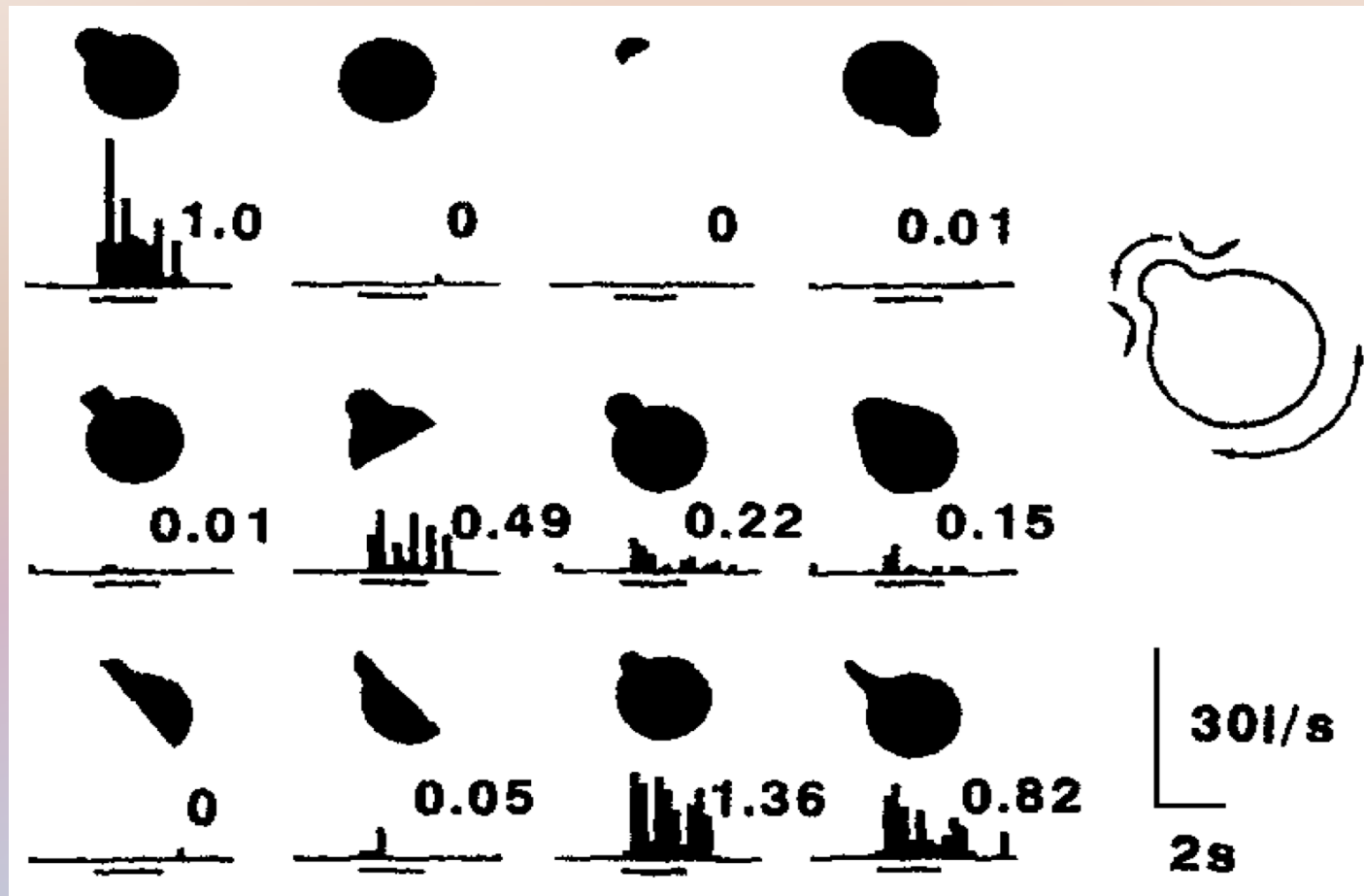
Categories: A Philosophical Problem

- A long-standing problem:
 - Socrates (d. 399 BCE) says, “that which we know we must surely be able to tell.” (*Laches* 190c)
 - Must knowledge be encoded in language-like structures?
- What makes a mental categorization accurate? Is there something “real” about a “chair”?
- Stereotypes are mental categories...
- Can you encode multiple categories at the same time?

Distributed Representations

- Let a 1,000 categories bloom... You've got the room in your head (billions of neurons)
- Each neuron can respond to multiple things (graded similarity)
- And each thing activates many neurons (who knows what is going to be relevant this time?)

Graded Responses

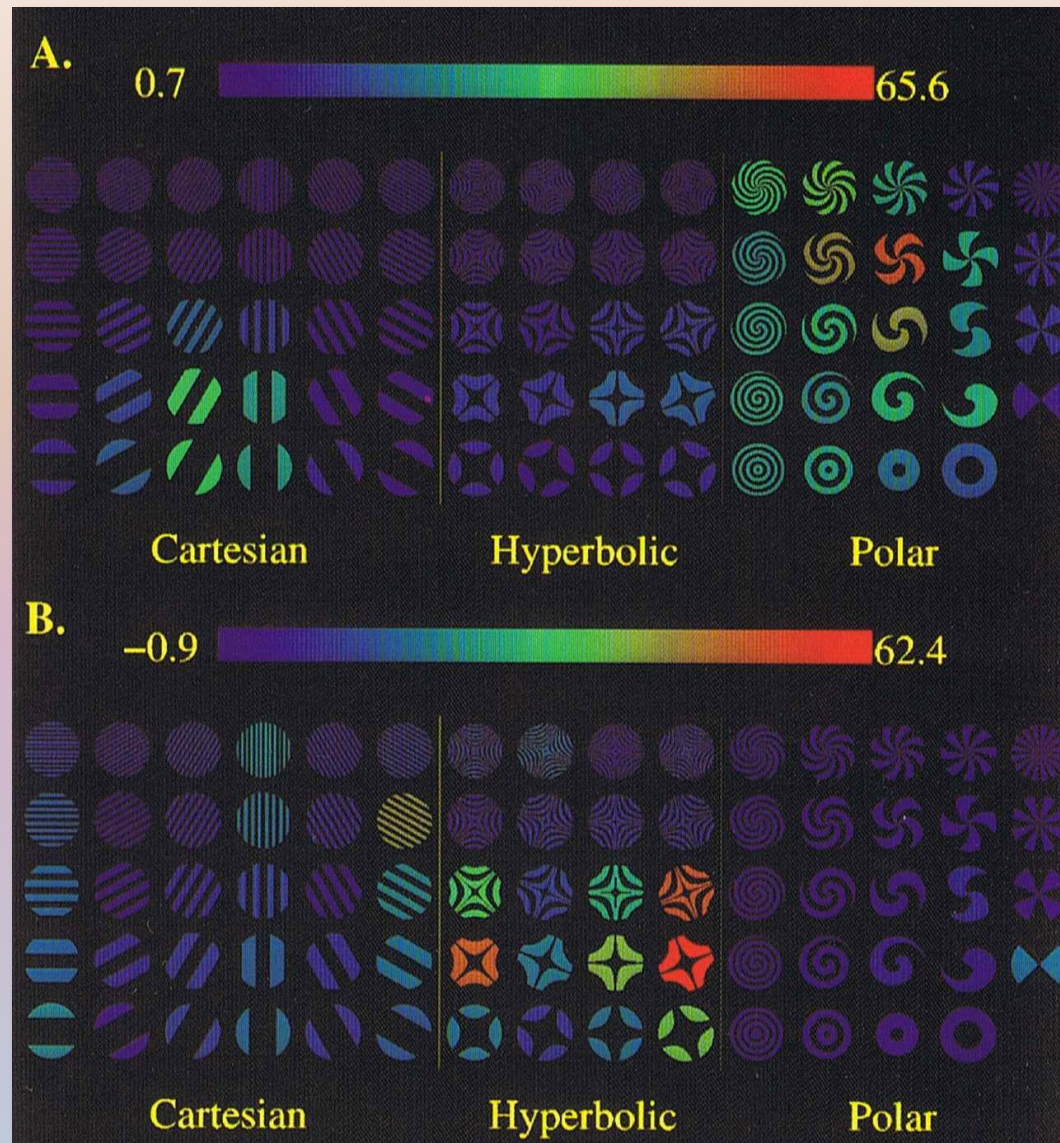


(slide < O'Reilly)

COSC 494/594 CCN

16

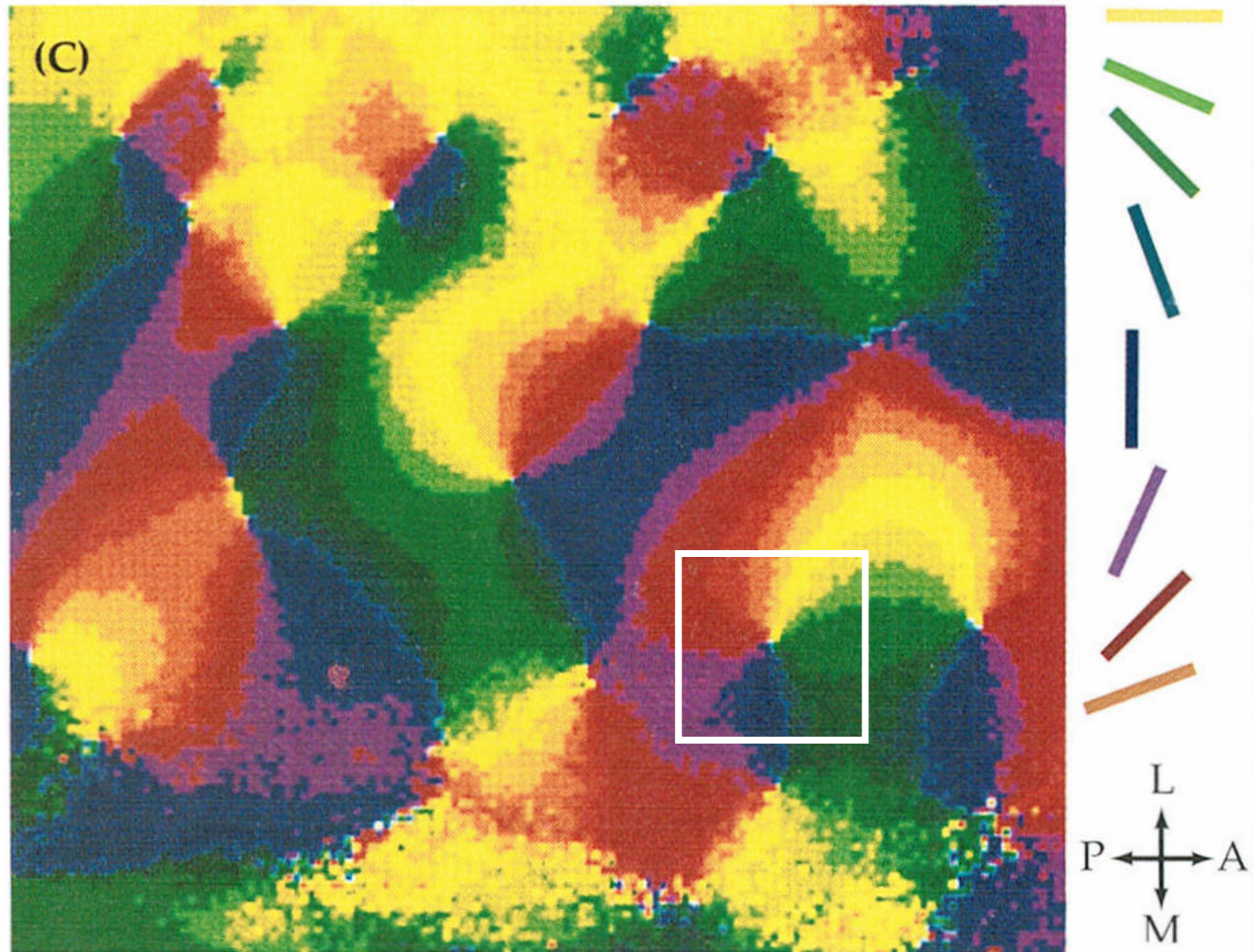
Cell Responses in V4



COSC 494/594 CCN

(fig. < Clark, *Being There*, 1997)

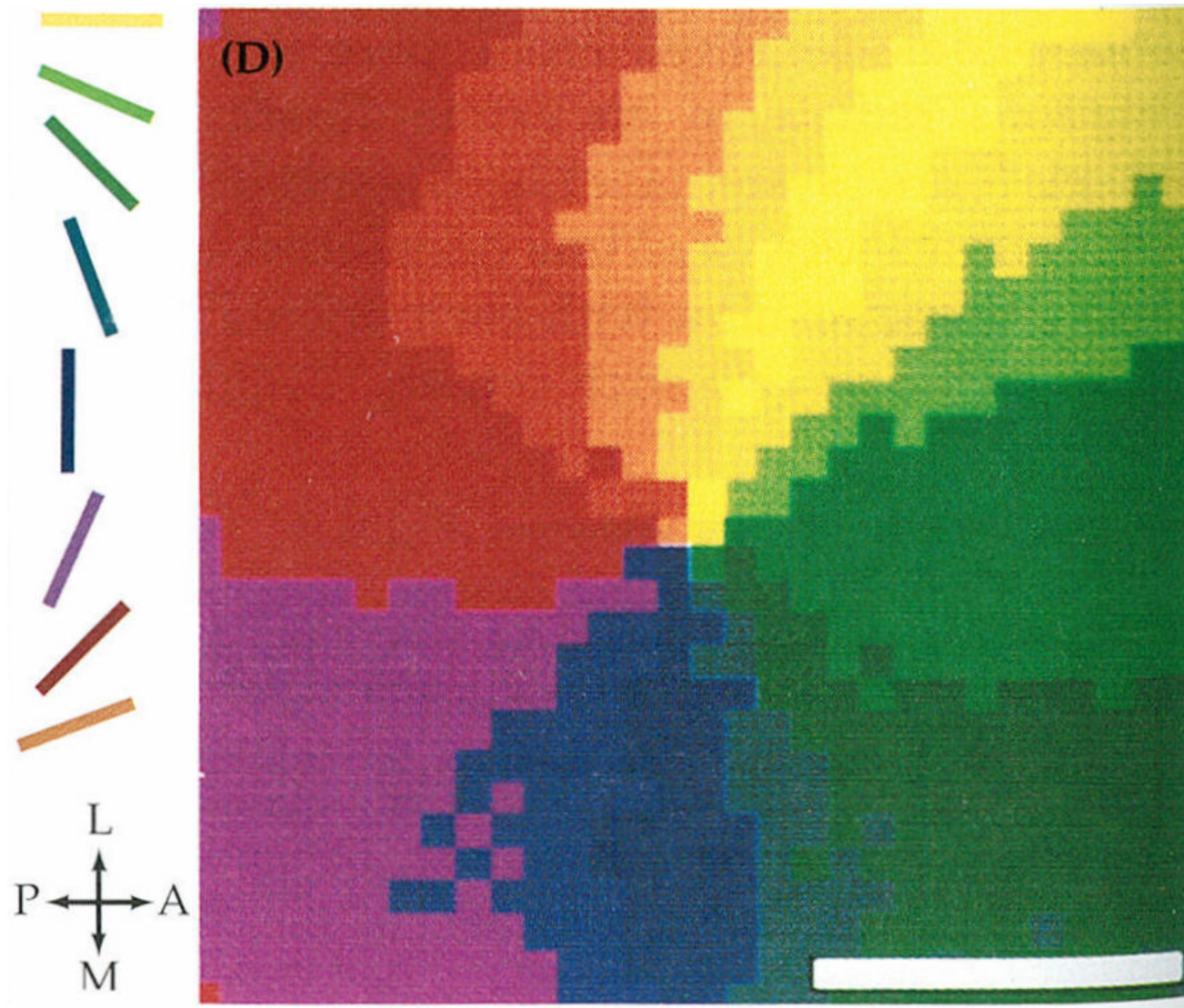
Orientation Columns



COSC 494/594 CCN

(fig. < Nicholls & al., *Neur. to Brain*)

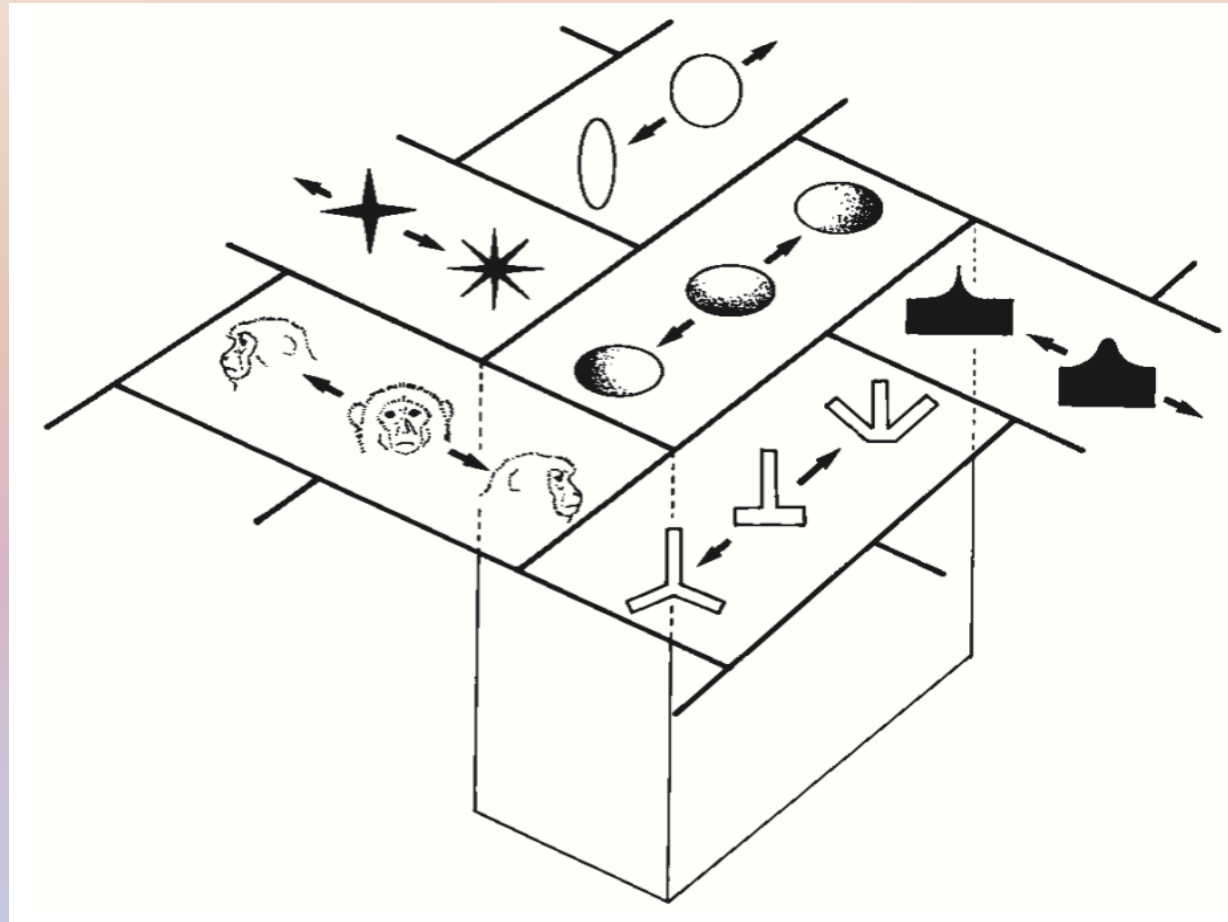
Orientation Columns



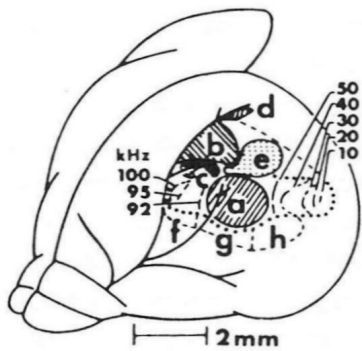
COSC 494/594 CCN

(fig. < Nicholls & al., *Neur. to Brain*)

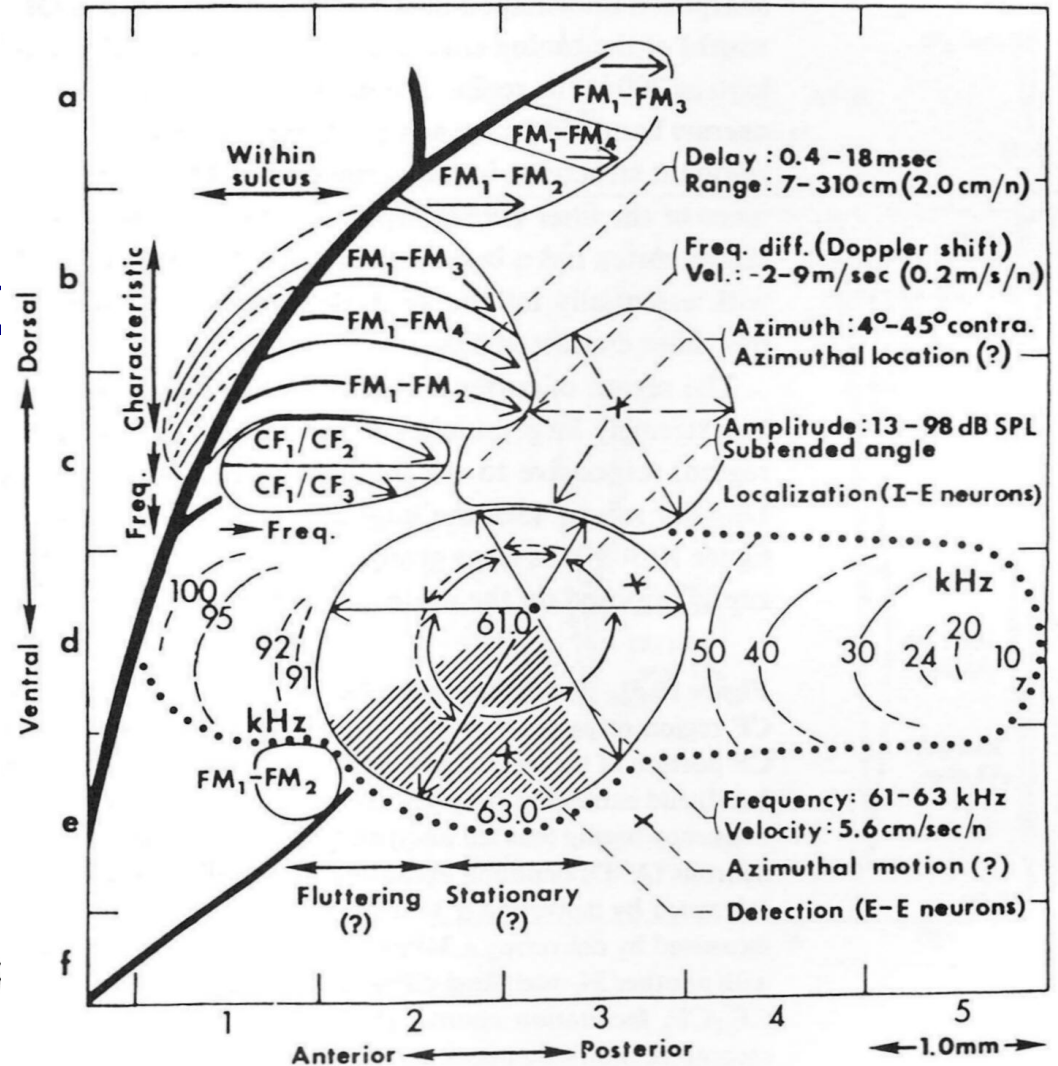
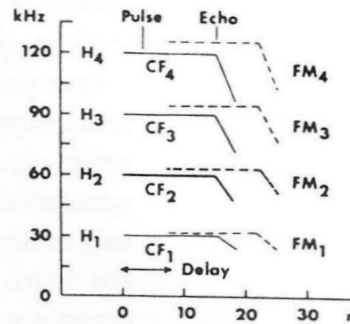
Topographic Organization



Topographic Maps: Bat Auditory Cortex



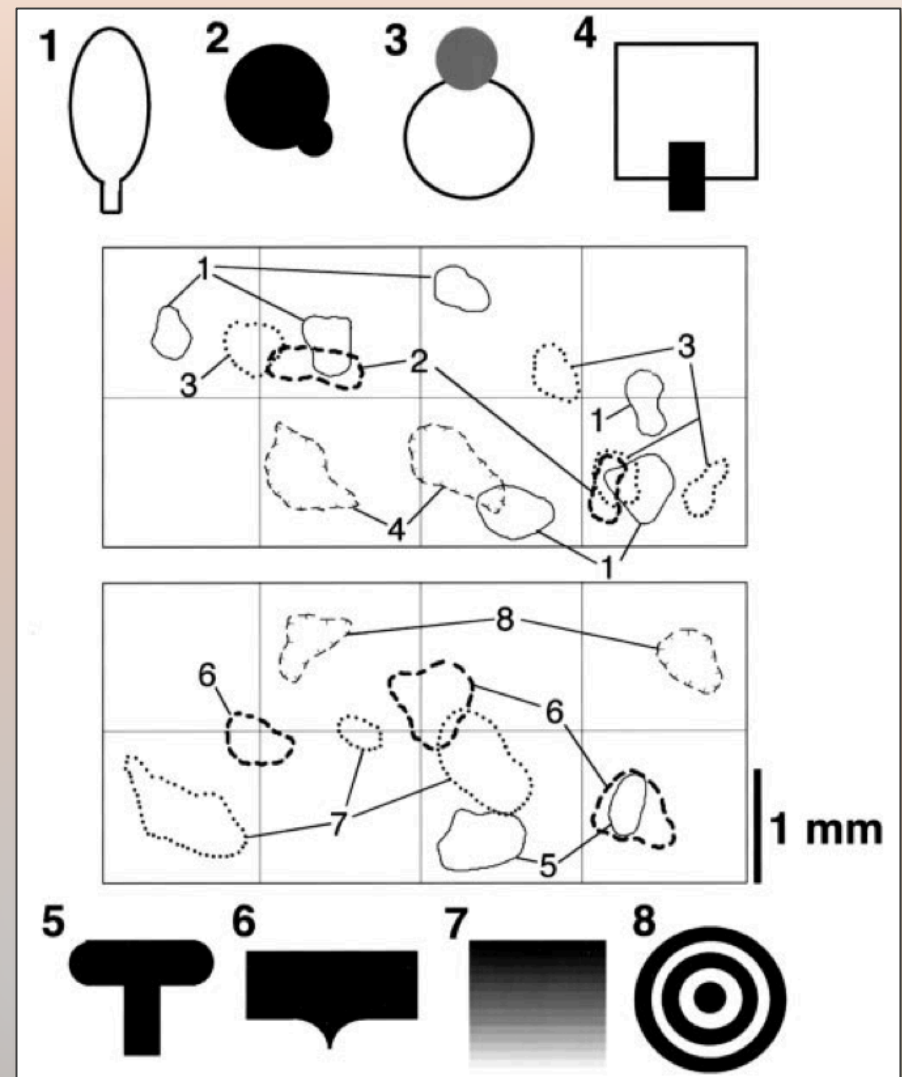
- a: DSCF
- b: FM-FM
- c: CF/CF
- d: DF
- e: DM
- f: AV
- g: VL
- h: VP



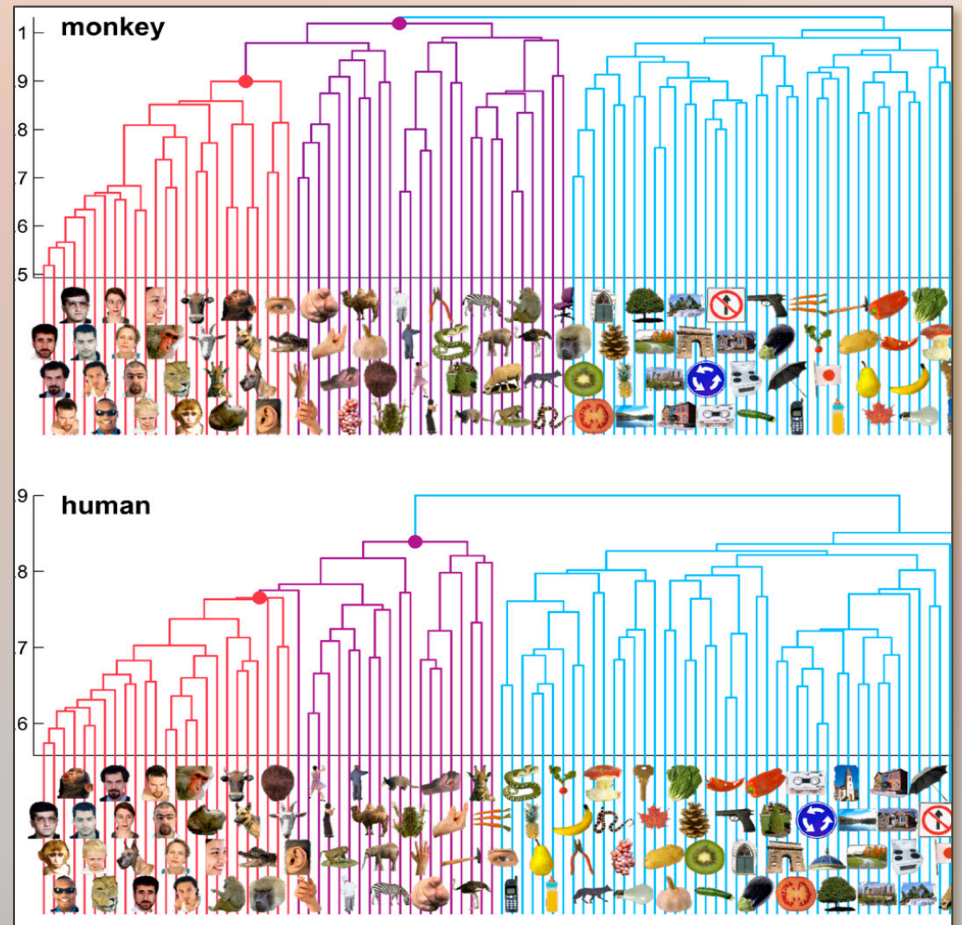
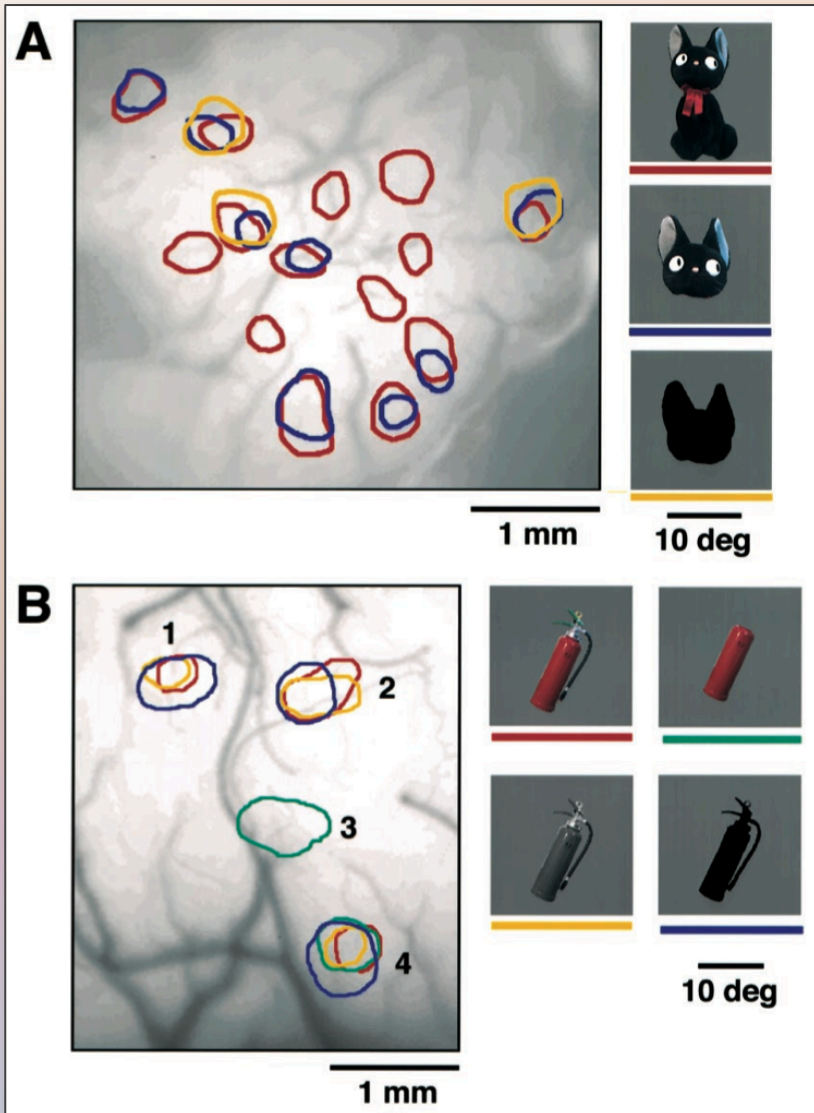
Sparse Distributed Representation

- Localist representation
 - “grandmother cells”
 - unlikely in brain
- K-out-of-N detectors
 - typically 15–25% of neurons active
- Approximate orthogonality

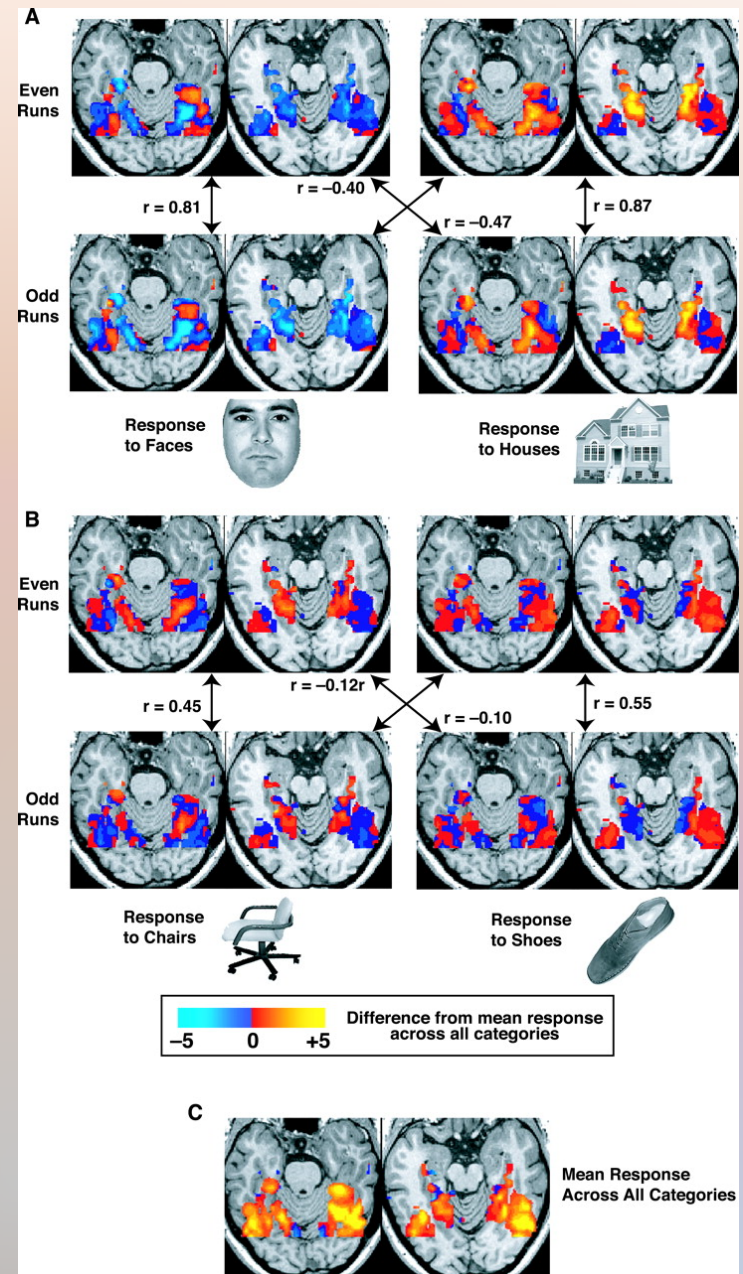
(monkey IT cortex)



Sparse Distributed Representations

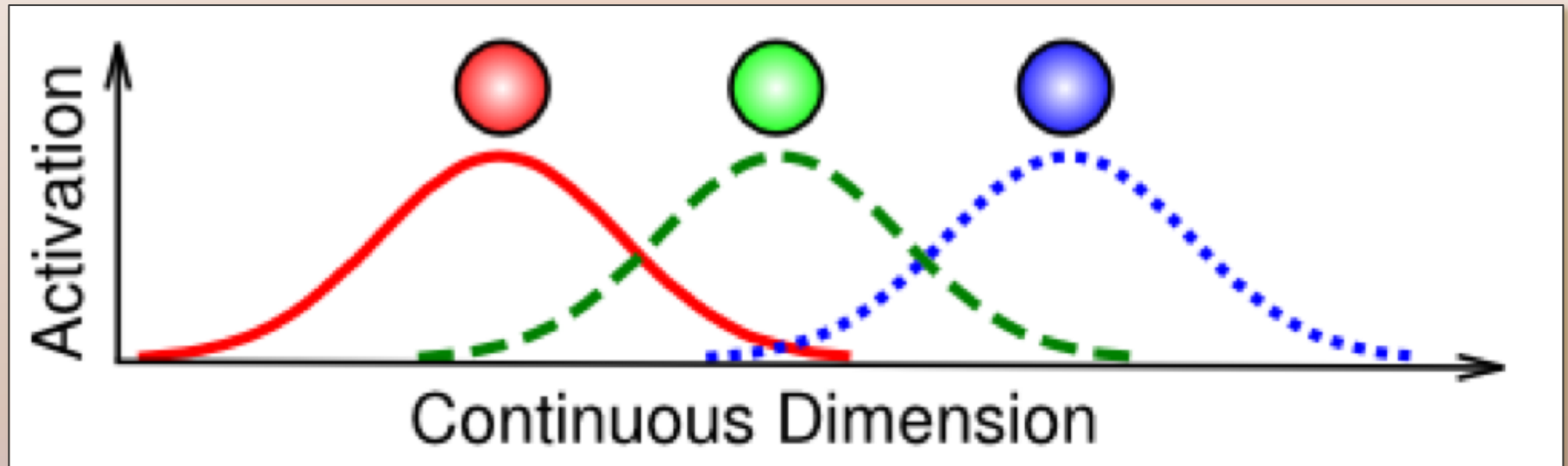


Not Just Monkeys



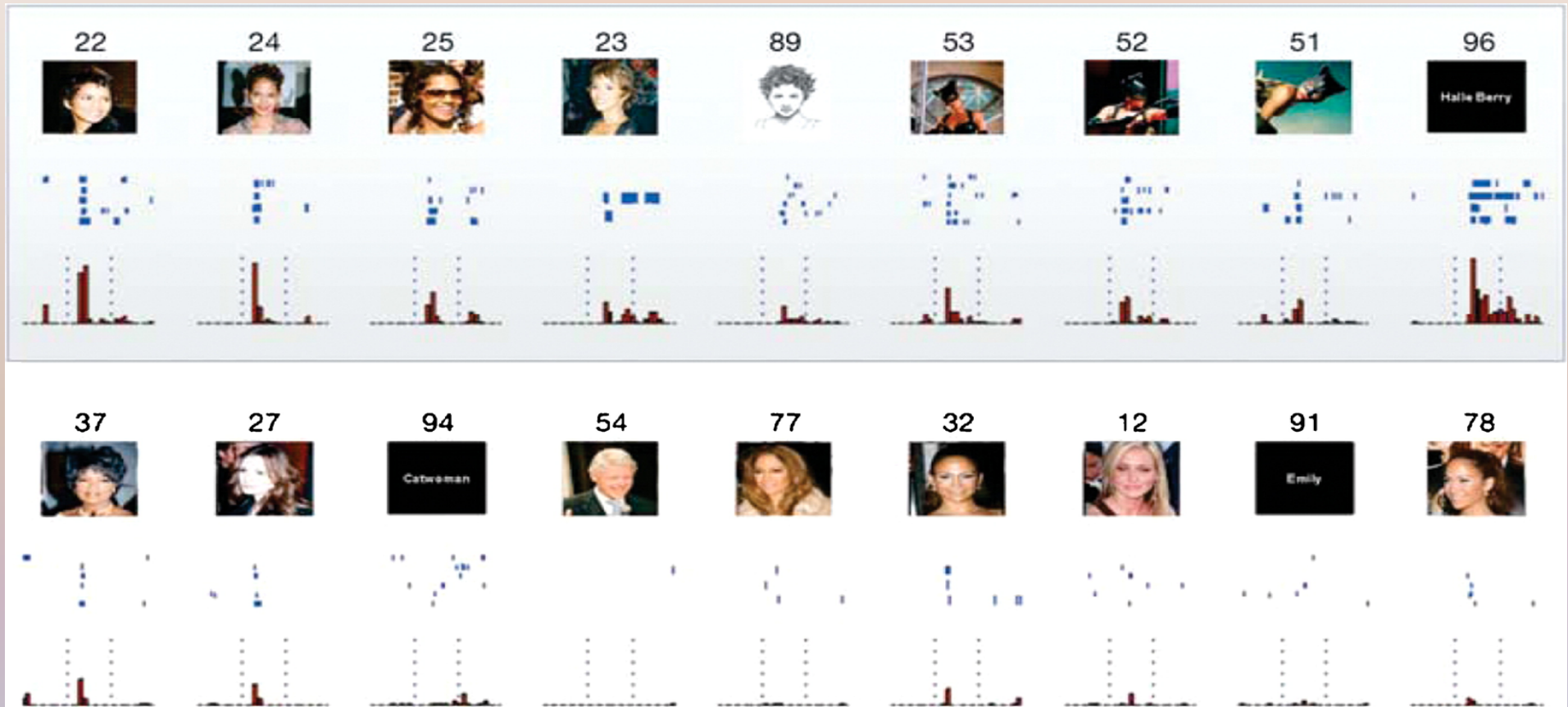
(slide < O'Reilly)

Coarse Coding



- Broadly-tuned receptive fields
- Population-coding of precise values
- Common throughout sensory and motor areas

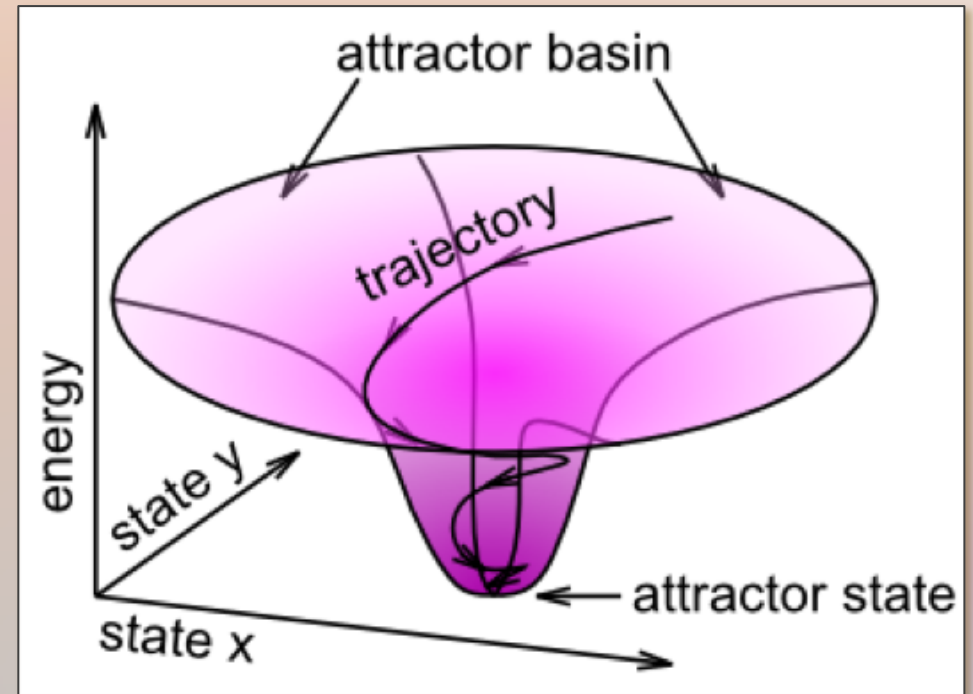
Localist Representations?



emergent demonstration: Face Categorization I

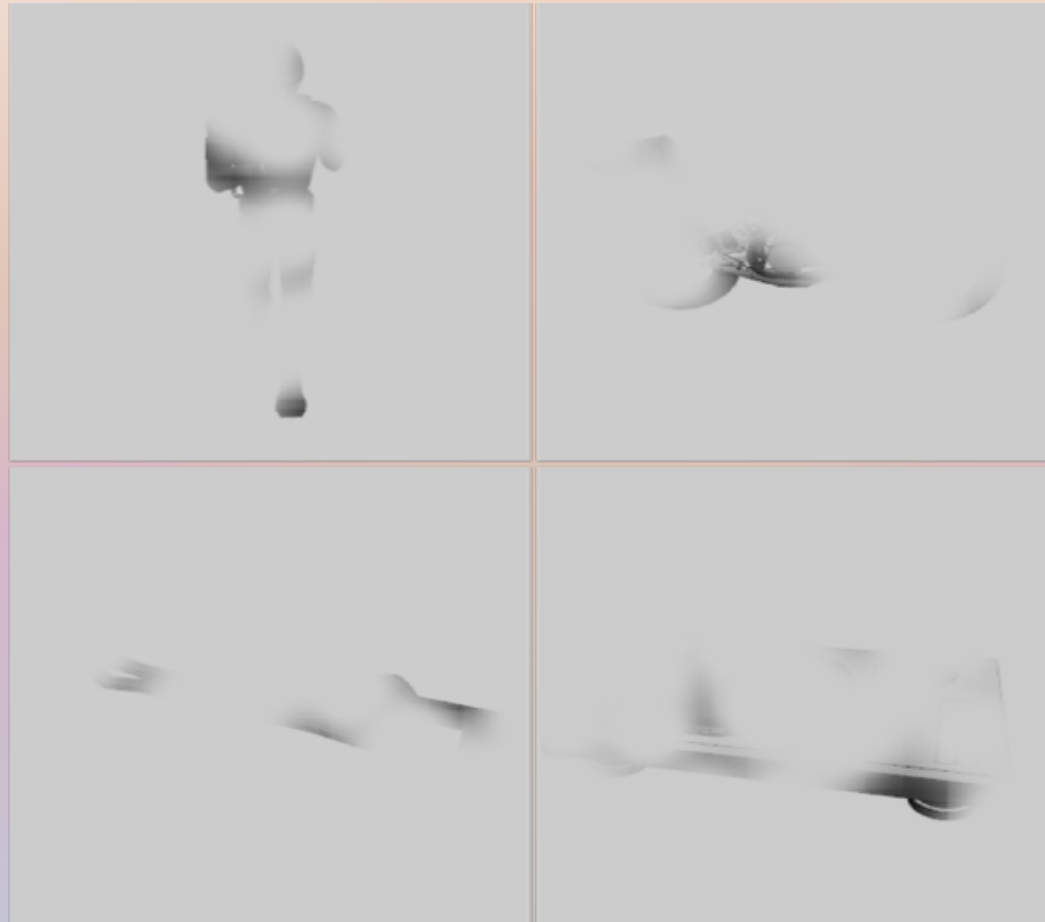
Bidirectional Excitation

- Functions
 - recognition
 - top-down imagery
 - ambiguity resolution
 - pattern completion
- Attractor dynamics
 - convergence on good representation
 - energy vs. harmony



(fig. < O'Reilly, *Comp. Cog. Neurosci.*)

What Are These?

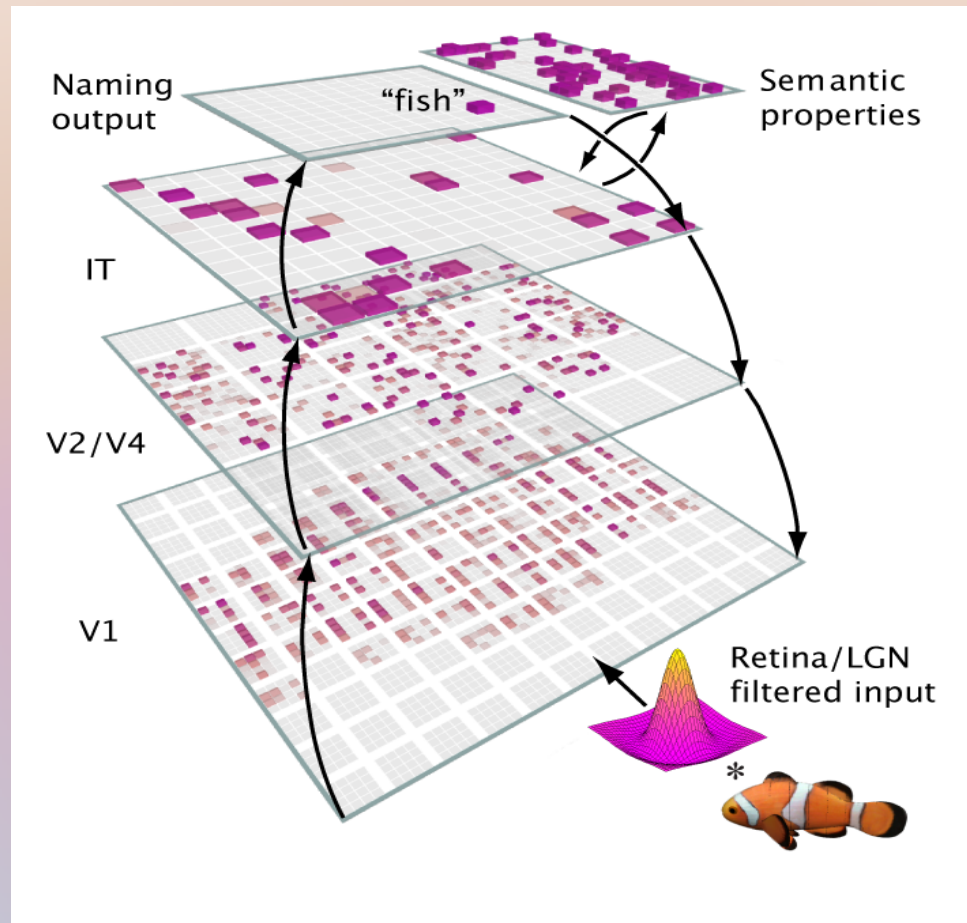


(slide < O'Reilly)

COSC 494/594 CCN

29

A Big Network Model...

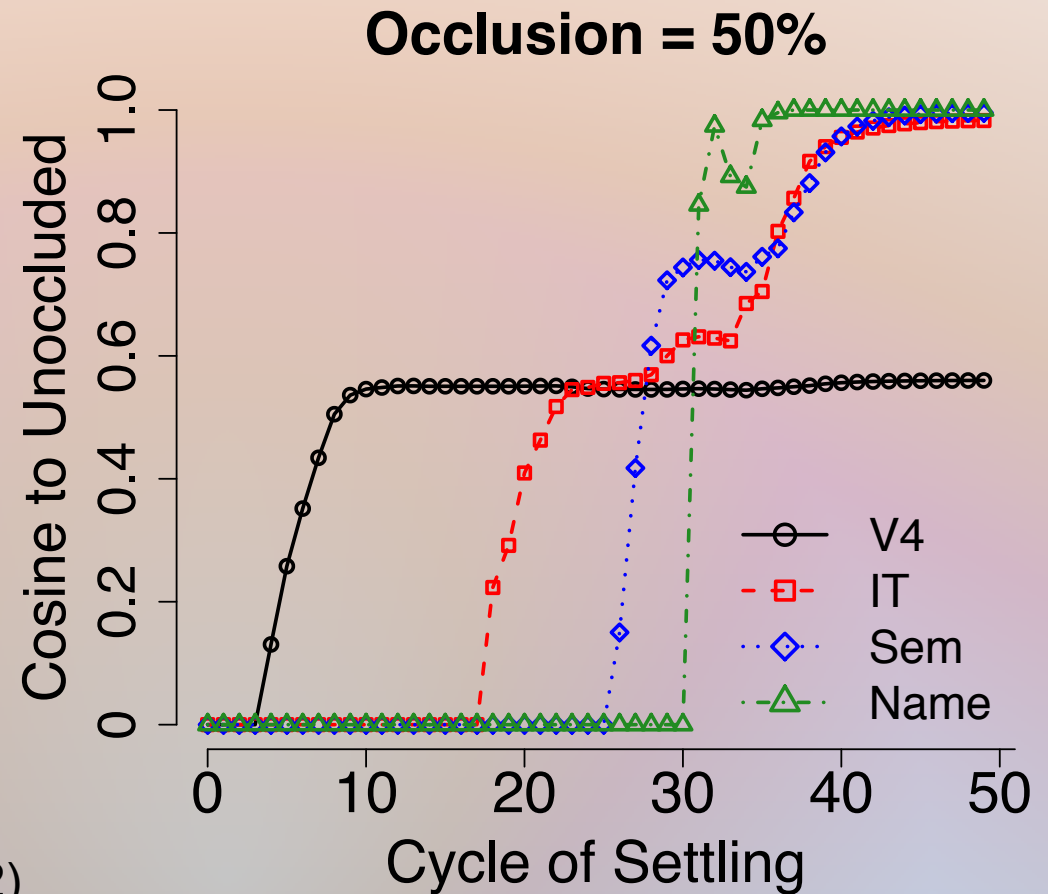


Bidirectional Dynamics



Wyatte, Herd, Mingus, O'Reilly (2012)

(slide < O'Reilly)



emergent demonstration:
Face Categorization II

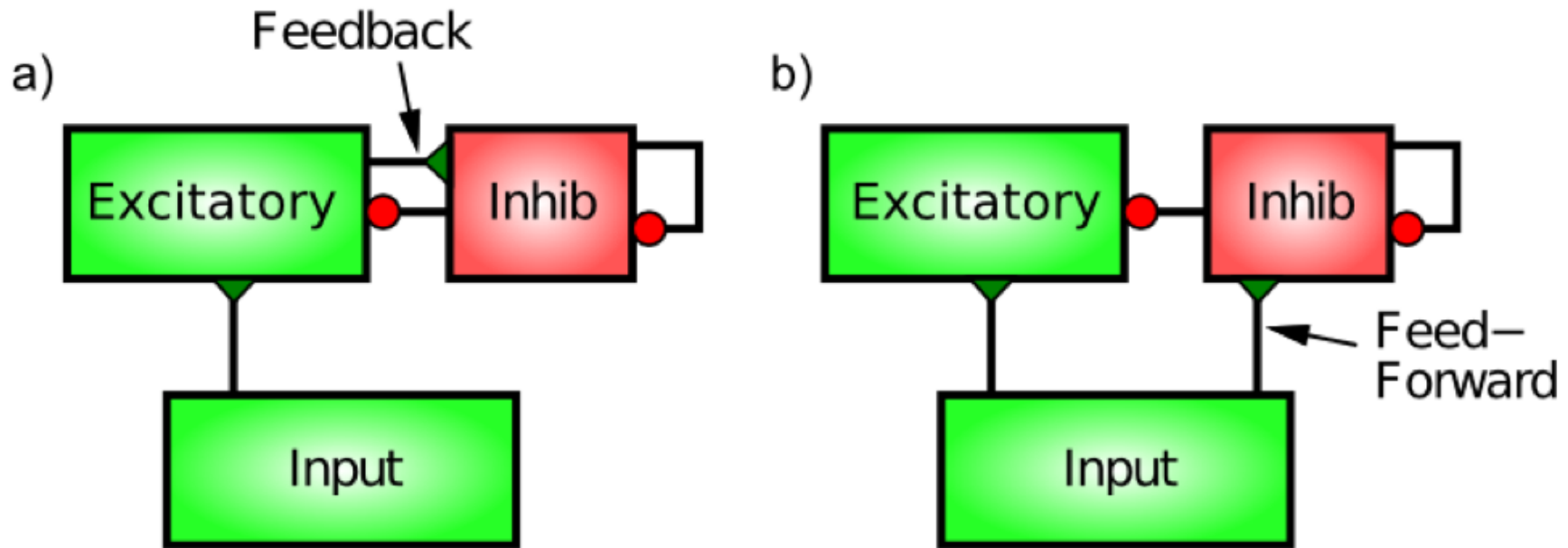
emergent demonstration:
Cats and Dogs

emergent demonstration:
Necker Cube

Inhibitory Competition and Activity Regulation

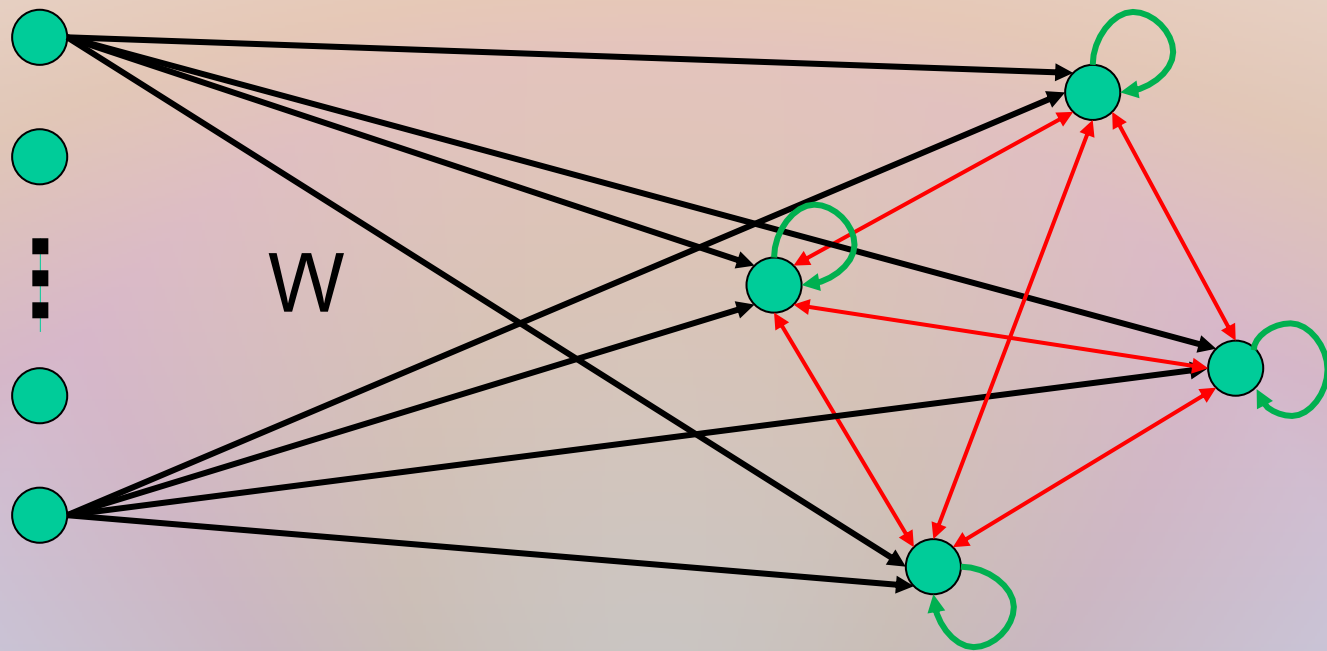
- Activity regulation
- Selective attention
- Competition
- Sparse distributed representation

Activity Regulation



- Feedback: reactive, reflects actual level of activity, robust, responsive, may be unstable
- Feedforward: anticipatory, limits feedback oscillation, slow, brittle
- Work well together

Competitive Network



Competitive Learning

- Competitive learning network
 - two layers, randomly initialized weights
 - second is self-reinforcing, mutually inhibitory
 - “winner takes all” dynamics
- Learning
 - winner moves toward last
 - weight vectors move to centers of clusters

FFFB Inhibition Approximation

- Approximates total effect of all inhibition in a layer
- Inhibition determined by feedforward and feedback terms:

$$g_i(t) = g_i[\text{FF}(t) + \text{FB}(t)]$$

- FF term is excess average input over set point:

$$\text{FF}(t) = \text{ff}[\langle \eta \rangle - \text{ff0}]^+$$

where $\langle \eta \rangle = n^{-1} \sum_{i=1}^n \eta_i$ is average input

- FB term varies with average activity:

$$\dot{\text{FB}}(t) = \text{dt}[\text{fb}\langle y \rangle - \text{FB}(t)]$$

where $\langle y \rangle = n^{-1} \sum_{i=1}^n y_i$ is average activity

- Will stabilize with $\text{FB}(t) = \text{fb}\langle y \rangle$

emergent demonstration: Inhibition

