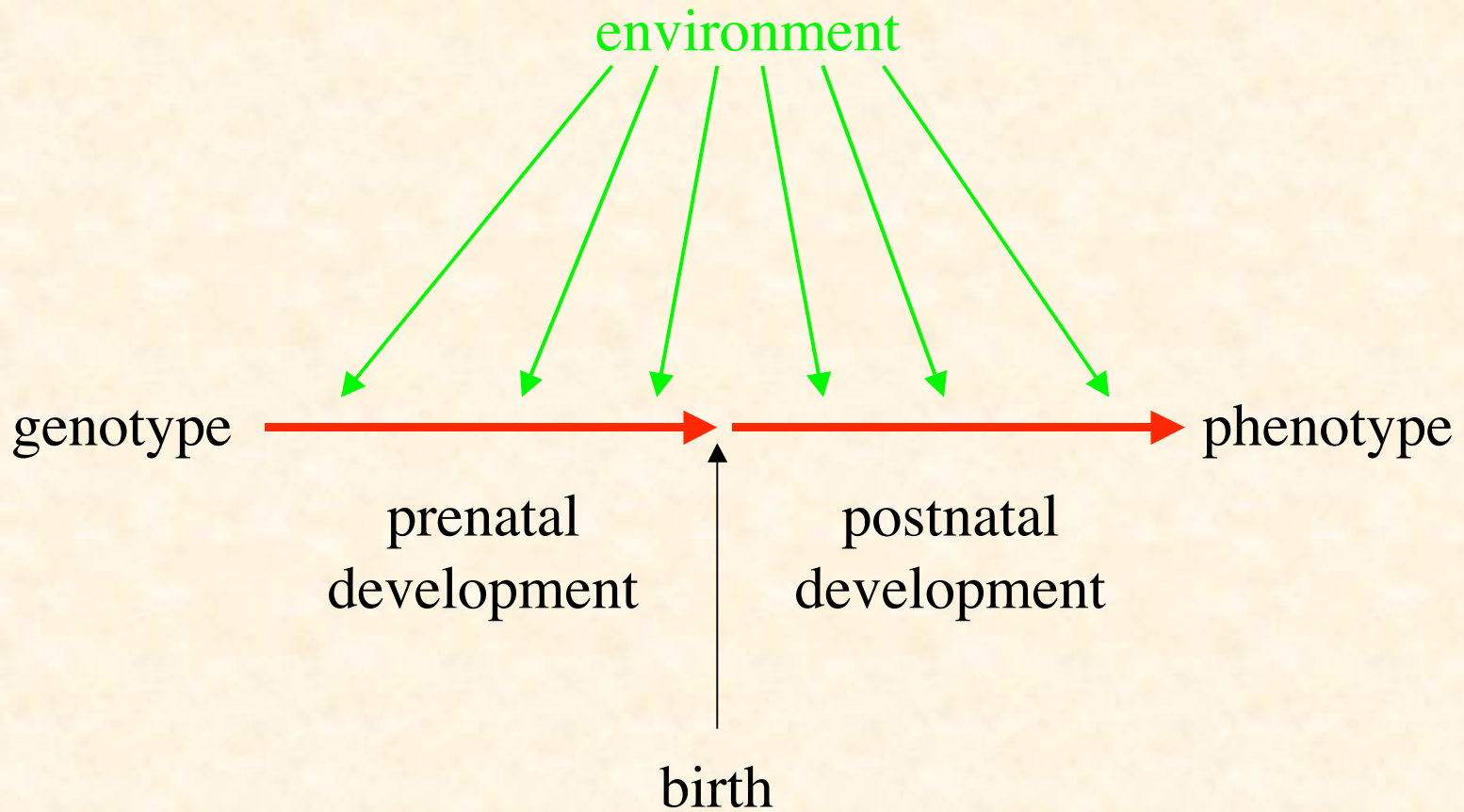


VI: Genetics & Evolution

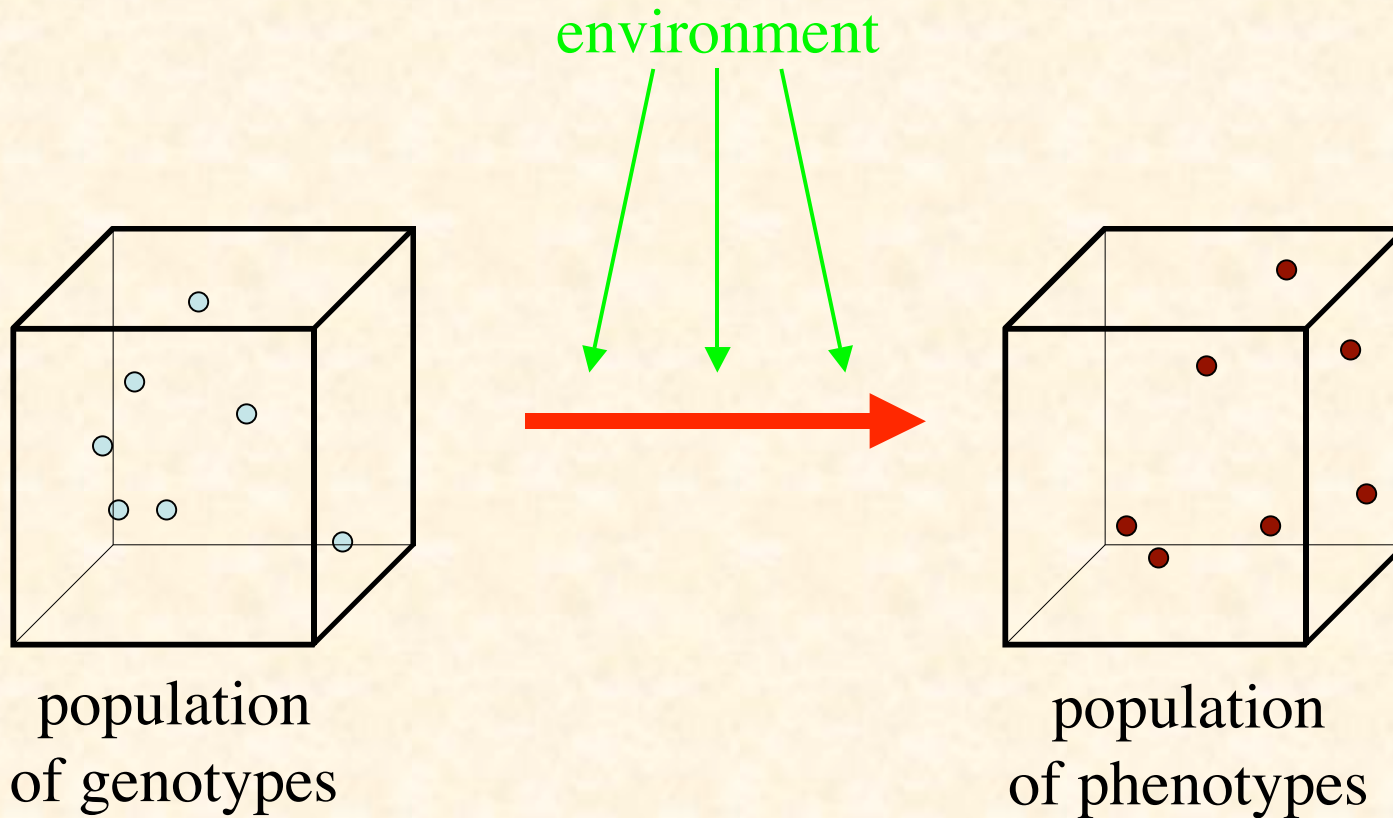
Genotype vs. Phenotype

- **Genotype** = the genetic makeup of an individual organism
- **Phenotype** = the observed characteristic of the organism
- Through interaction with environment, a genotype is *expressed* in a phenotype

Ontogeny



Genotype Space vs. Phenotype Space



Selection

- Selection operates on the phenotype, not the genotype
- Selection of genotypes is indirect

“Central Dogma” of Genetics

- “The transfer of information from nucleic acid to nucleic acid, or from nucleic acid to protein may be possible, but transfer from protein to protein, or from protein to nucleic acid is impossible.”

– Francis Crick
- A hypothesis (not a dogma)
- “New” Lamarckism: “jumping genes” and reverse transcription

Essentialism vs. “Population Thinking”

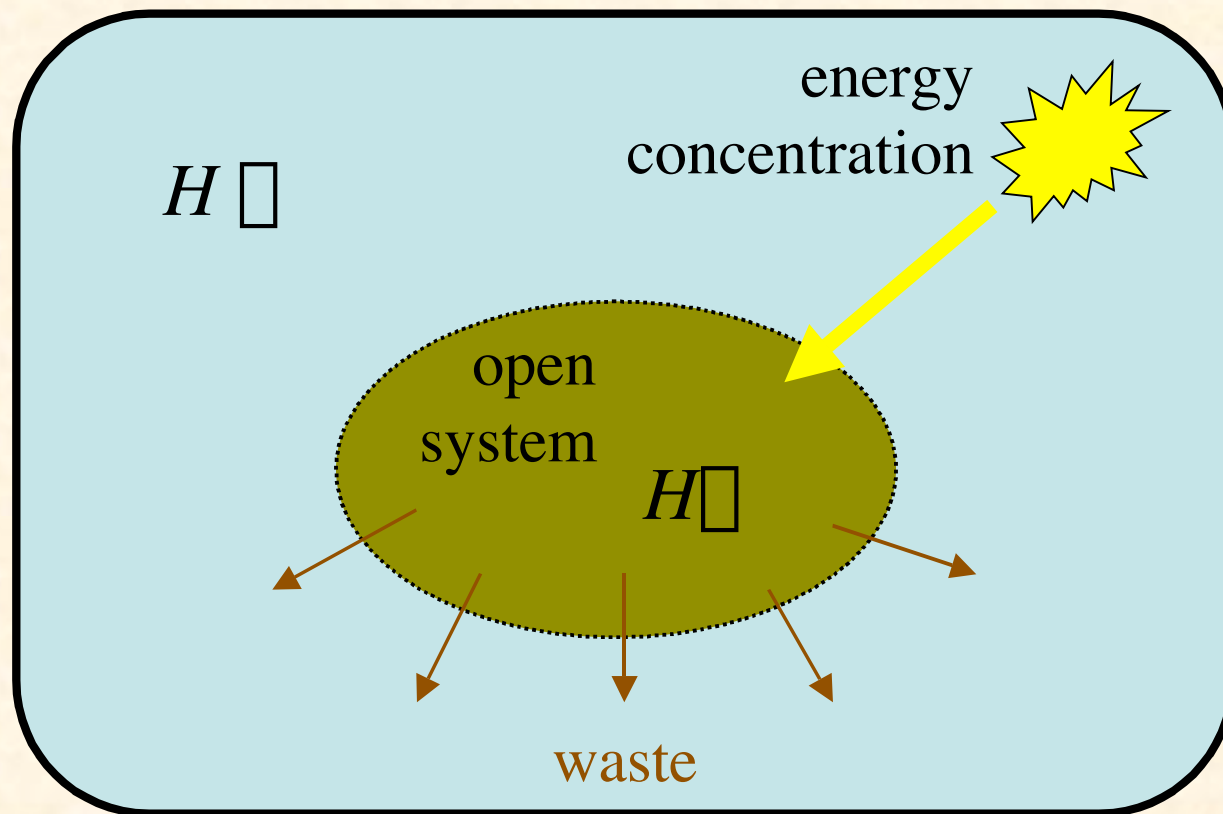
- Essentialism: each species has a fixed, ideal “type”
 - actual individuals are imperfect expressions of this ideal
 - species have sharp boundaries
 - the type is real, variation is illusory
- Population thinking: a species is a reproductive population
 - only individual organisms exist
 - species have blurred boundaries
 - species are time-varying averages
 - variation is real, the type is an abstraction

The Second Law of Thermodynamics

closed system

entropy $H \square$

The Second Law and Open Systems



Nonequilibrium Thermodynamics

- Classical thermodynamics limited to systems in equilibrium
- Extended by thermodynamics of *transport processes*
 - i.e. accounting for entropy changes when matter/energy transported into or out of an *open system*
- Flow of matter/energy can maintain system far from equilibrium for long periods
- Hence, *nonequilibrium thermodynamics*

An Energy Flow Can Create Structure

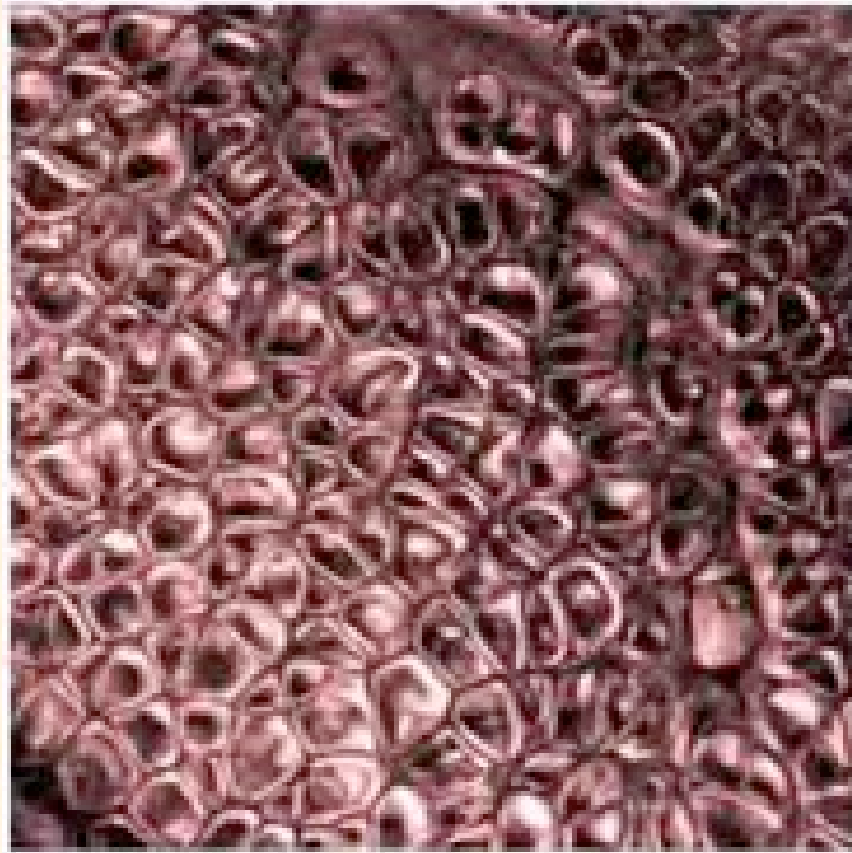


11/12/03

(photo from Camazine & al. *Self-Org. Bio. Sys.*)

11

Bénard Convection Cells



11/12/03

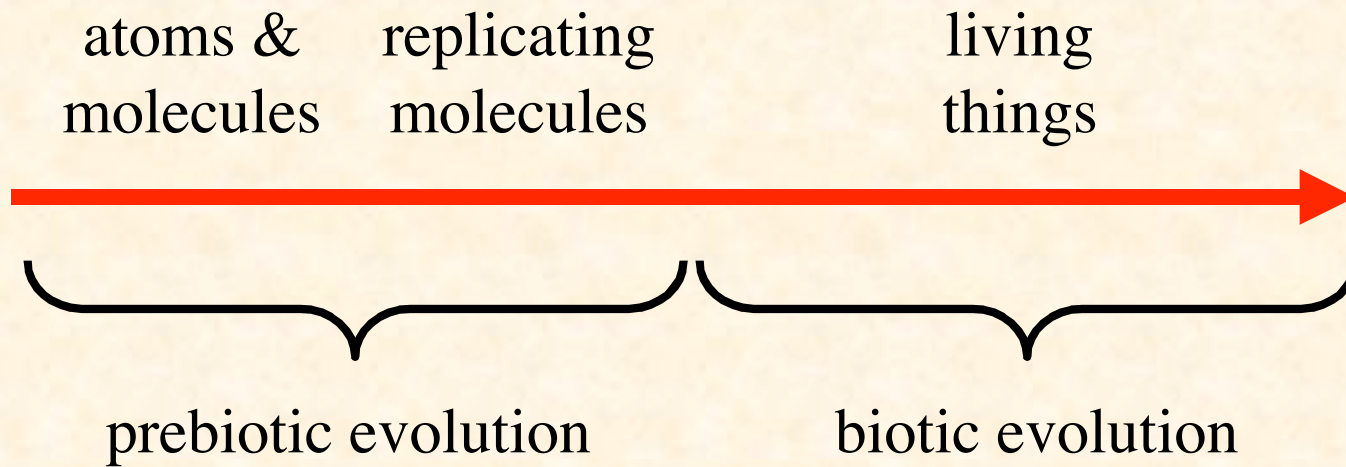
(photo from Camazine & al. *Self-Org. Bio. Sys.*)

12

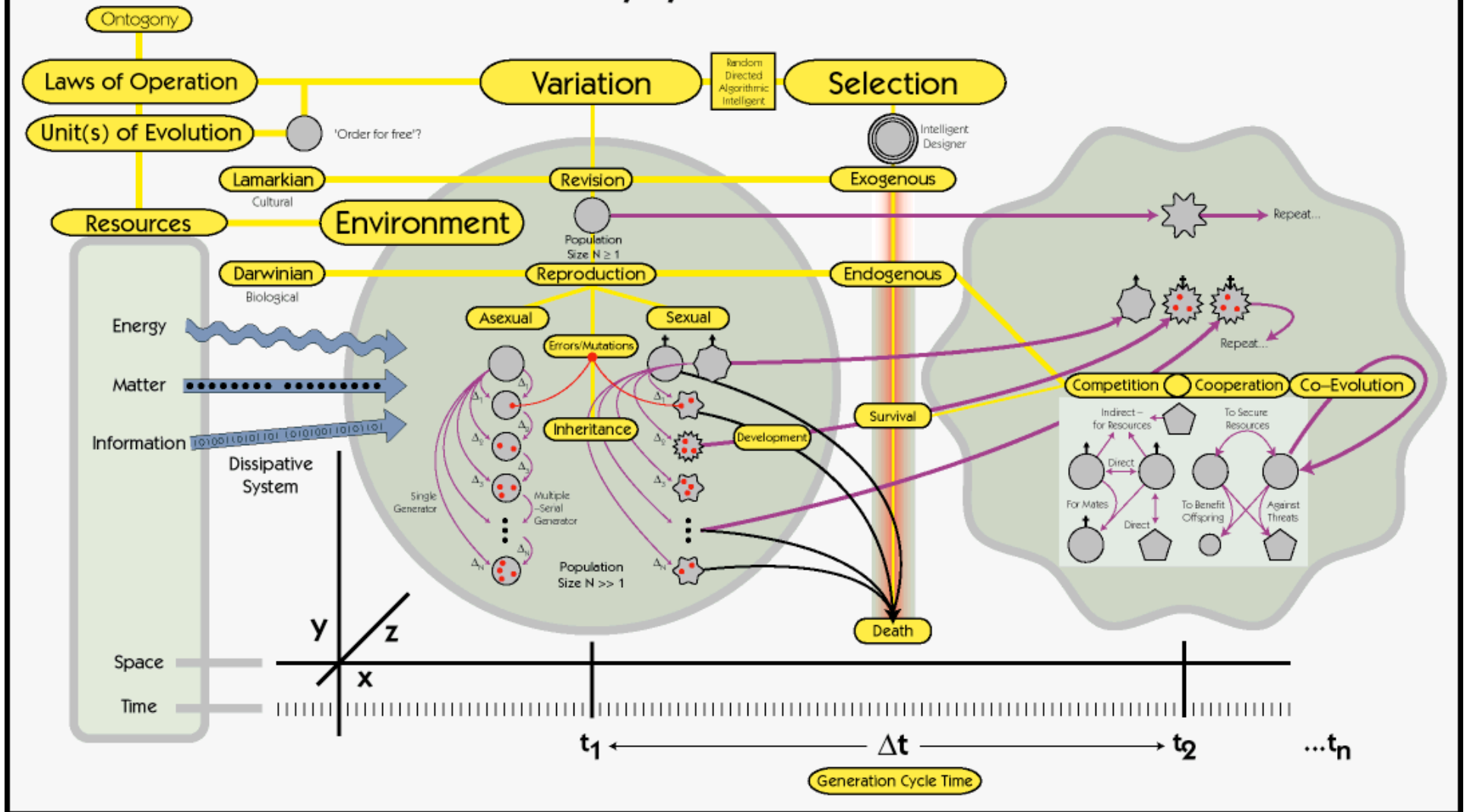
Persistent Nonequilibrium Systems

- *If* flow creates system so structured to maintain flow
- *then* positive feedback causes nonequilibrium system to persist indefinitely
 - but not forever (2nd law)
- Systems we tend to see are those most successful at maintaining nonequil. state
- Applies to species as well as organisms

Evolution



Evolutionary System Model



Fitness

- 1st approximation: the relative ability of an individual organism to optimize the energy flow to maintain its nonequilibrium state long enough to reproduce (**survival fitness**)
- 2nd approximation: **reproductive fitness** = the relative efficiency at producing viable offspring
 - of oneself (**exclusive fitness**)
 - of oneself or close relatives (**inclusive fitness**)

“Selfish Gene”

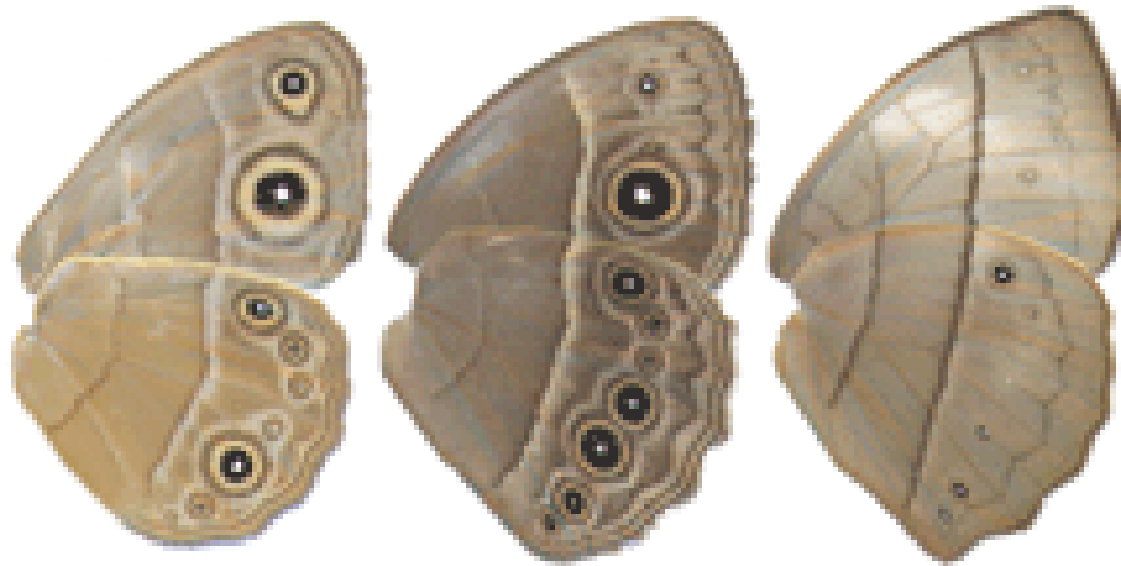
- An organism is a gene’s way of making more copies of itself
- A gene (or collection of genes) will tend to persist in a population if they tend to produce physical characteristics & behavior that are relatively successful at producing more copies of itself
- Nevertheless, it is physical organisms (phenotypes) that confront the environment

Complicating Factors

- Individual genes influence multiple characteristics & behaviors
- Genes are not independent
- “Fitness” is in the context of a (possibly changing) environment including:
 - conspecifics
 - coevolving predators and prey
- Conclusion: beware of oversimplifications
 - keep entire process in mind

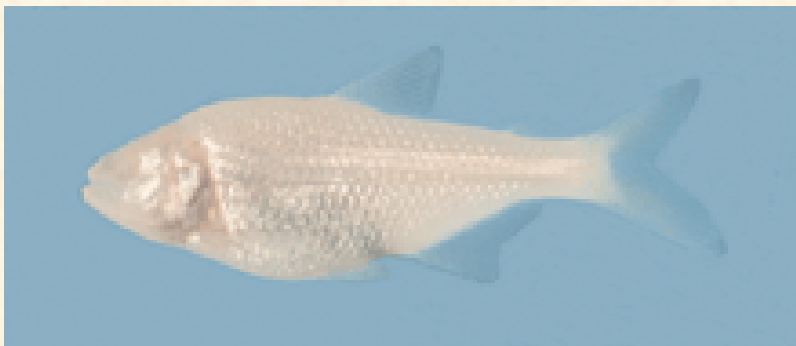
Example Effects of Single Genes

Butterfly Eyespots



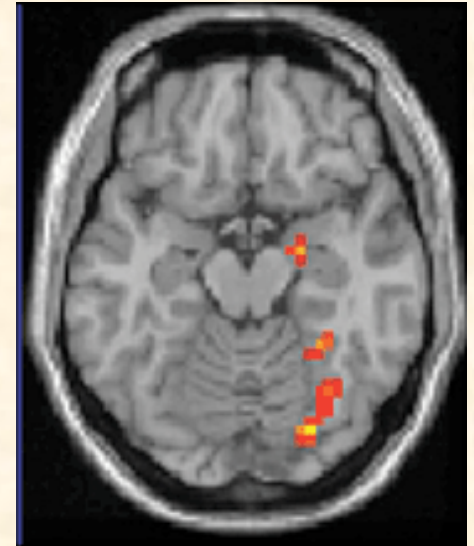
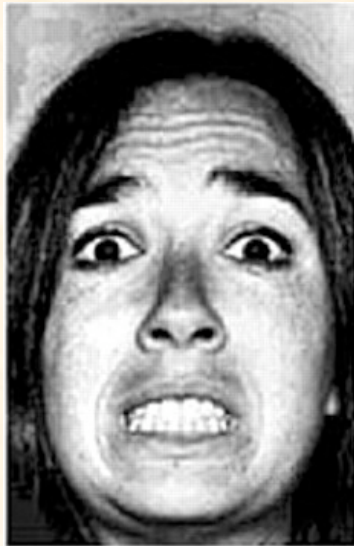
- Major changes within 6 generations
- May lead to patterns not seen in previous generations

Two Populations of *Astyanax mexicanus*



- Two populations of one species
- Regulation of one gene (controlling head development)
 - eyes, smaller jaws, fewer teeth
 - blind, larger jaws, more teeth

Human Fear Response



Single Gene Affecting Human Fear Response

- Two alleles for gene:
 - short allele □ greater anxiety response to angry or frightened faces
 - long allele □ lesser response
- Gene encodes transporter protein, which carries serotonin back into neuron after release
- Short allele produces 1/2 amount of protein
- Accumulating serotonin affects neighboring cells

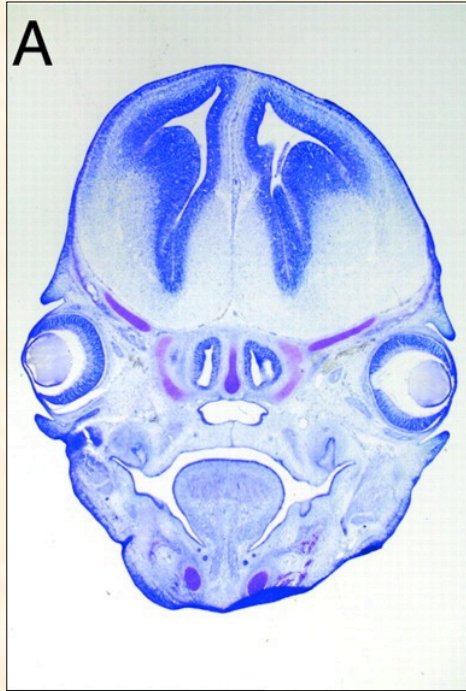
Human vs. Rat Cortex



- Human cortex relatively larger
- Also more structured

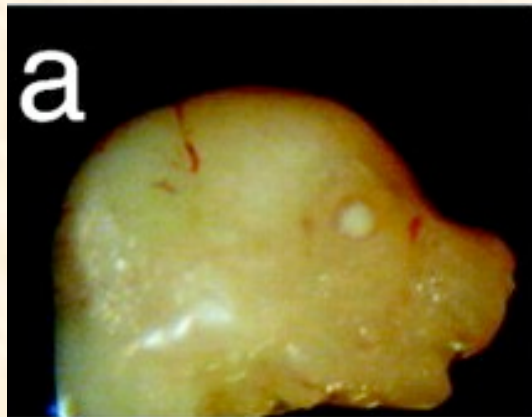
Experiment

- Problem: How do organs know when to stop growing?
- Genetically engineer rats to express a mutant form of protein (β -catenin)
- More resistant to breakdown, β accumulates
- Spurs neural precursor cells to proliferate



Results

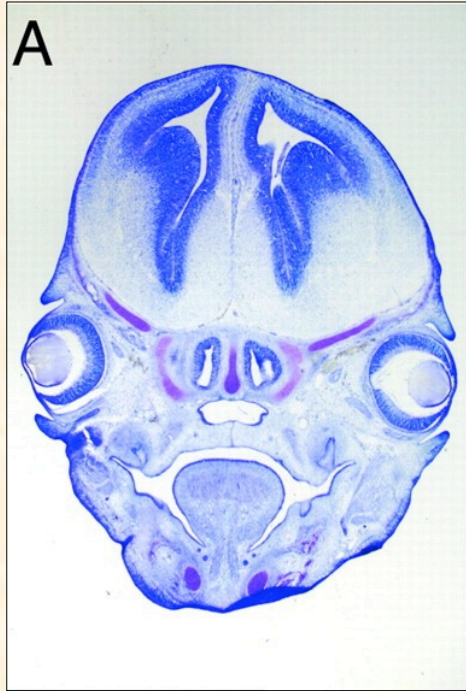
□ normal



11/12/03

(photos from Chenn & Walsh 2002)

26



Results

□ normal
□ transgenic

