

Cadabra Instructions
by
Kevin Tham and D. Bouldin
10/12/2010

Login to ada7 or ada8 or ada9

```
[bouldin@ada8 651-hw8]$ cp ~bouldin/webhome/protected/cadabra.tar.gz .
```

```
[bouldin@ada8 651-hw8]$ gunzip cadabra.tar.gz
```

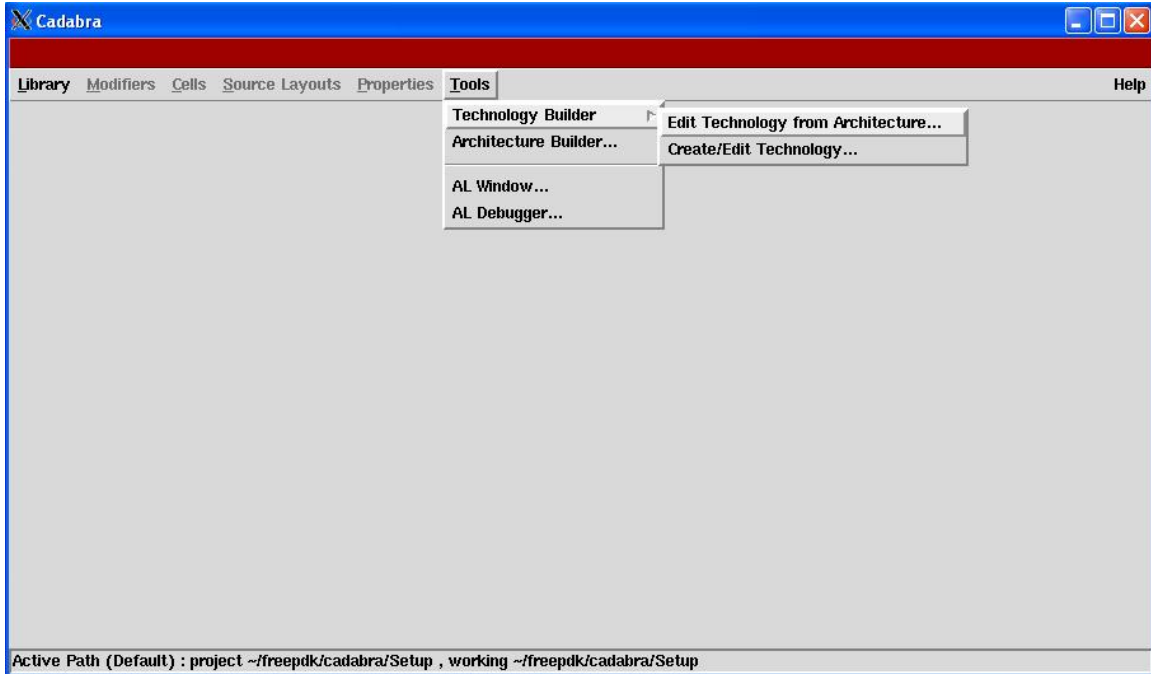
```
[bouldin@ada8 651-hw8]$ tar -xvf cadabra.tar
```

```
[bouldin@ada8 cadabra]$ cd cadabra
```

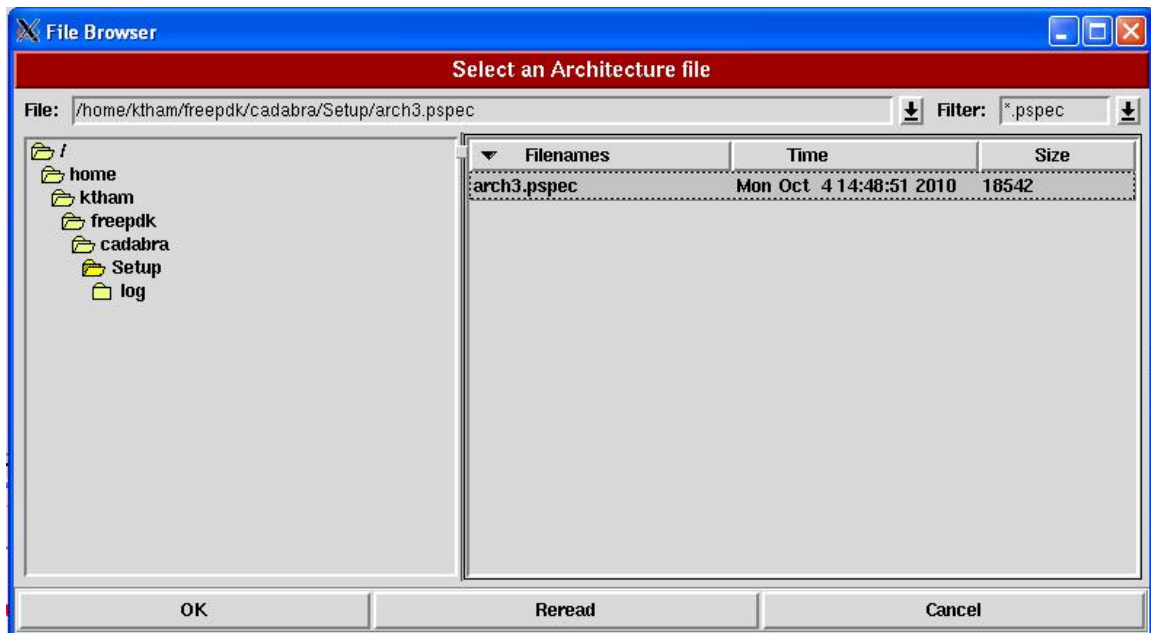
```
[bouldin@ada8 cadabra]$ ./run_cadabra
```

The CADABRA window will pop up.

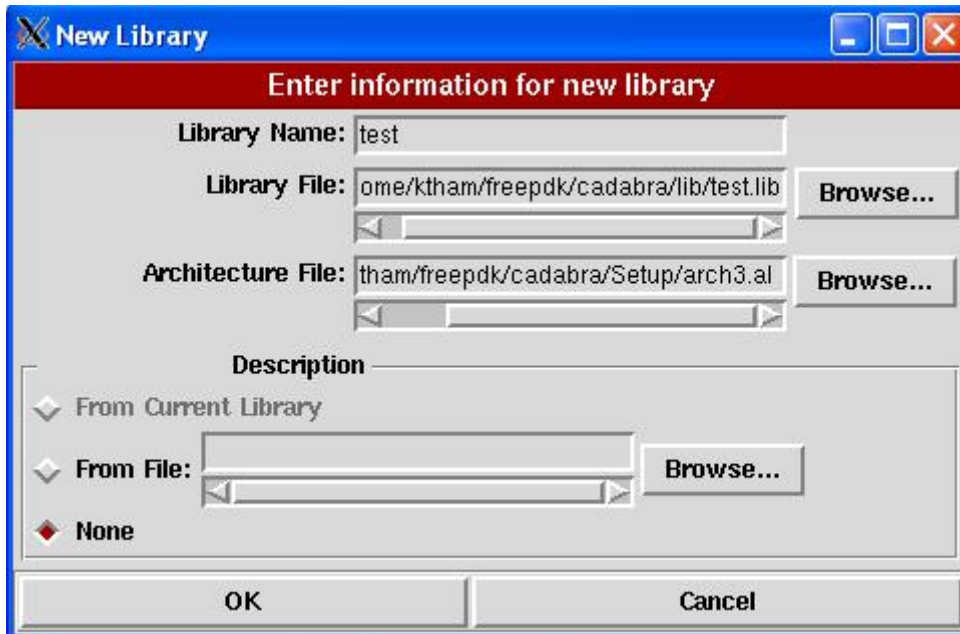
(1) Select Tools→Technology Builder → Edit Technology from Architecture



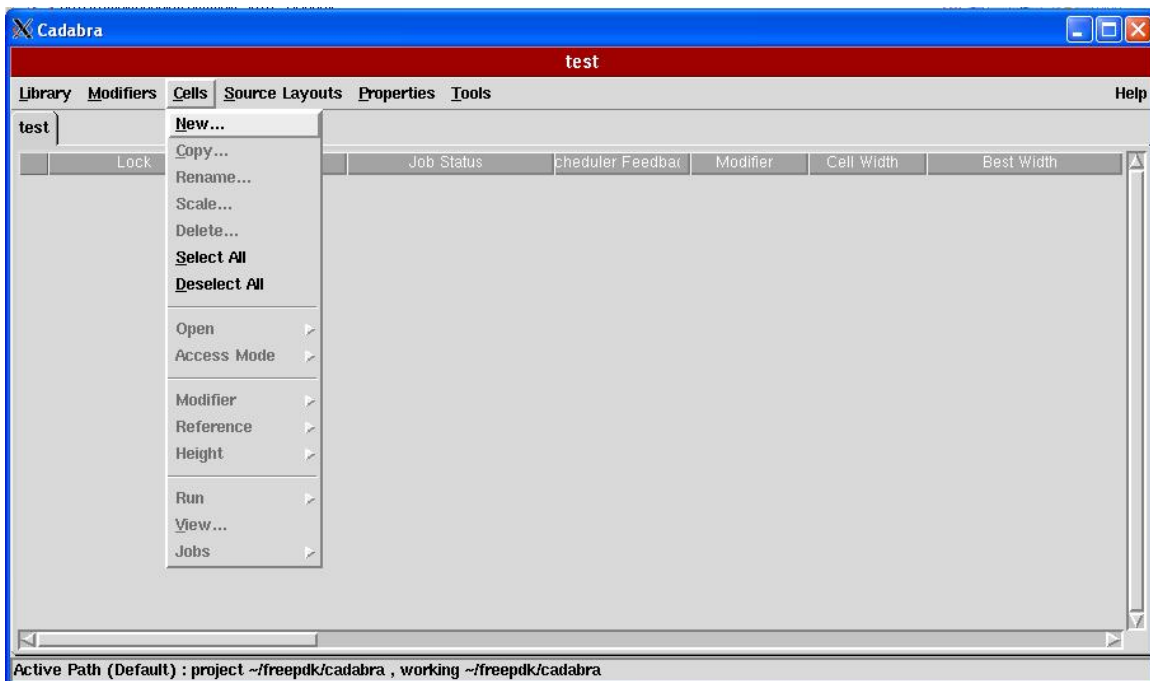
(2) Select arch3.pspec and click OK.



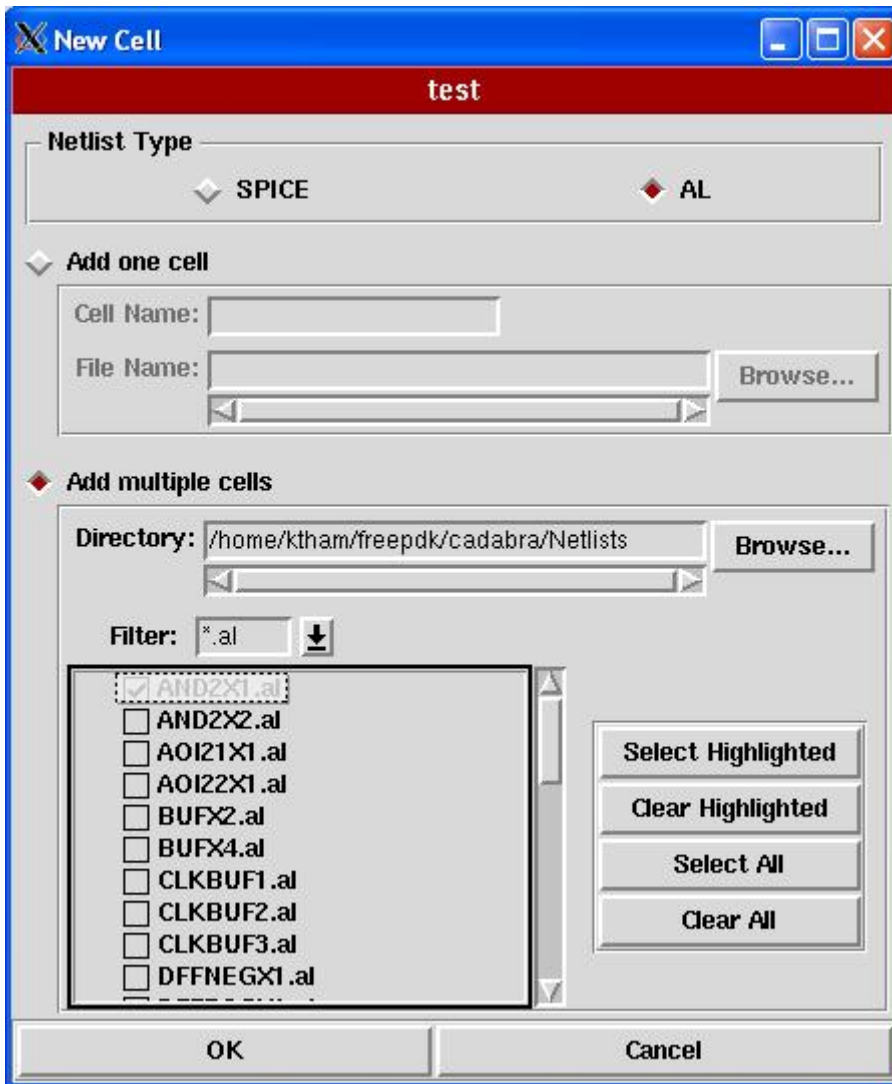
(3) Select Library→New and fill in the template below and click OK.



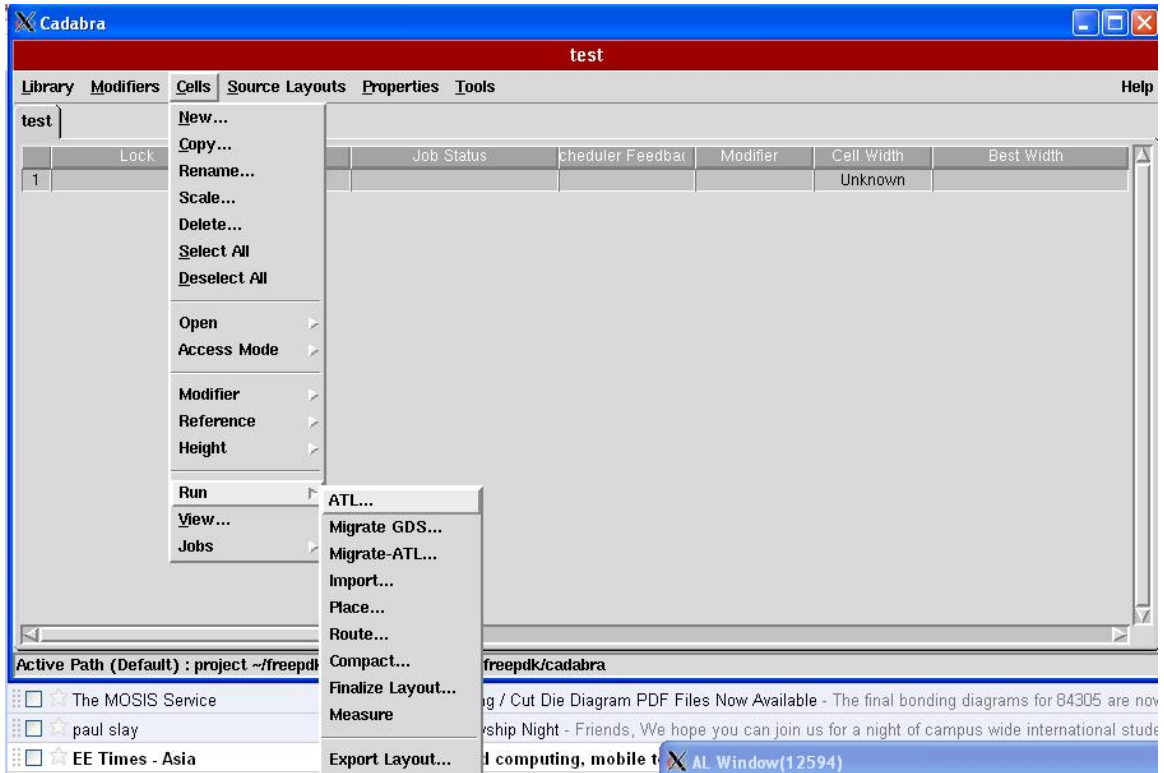
(4) Select Cells→ New



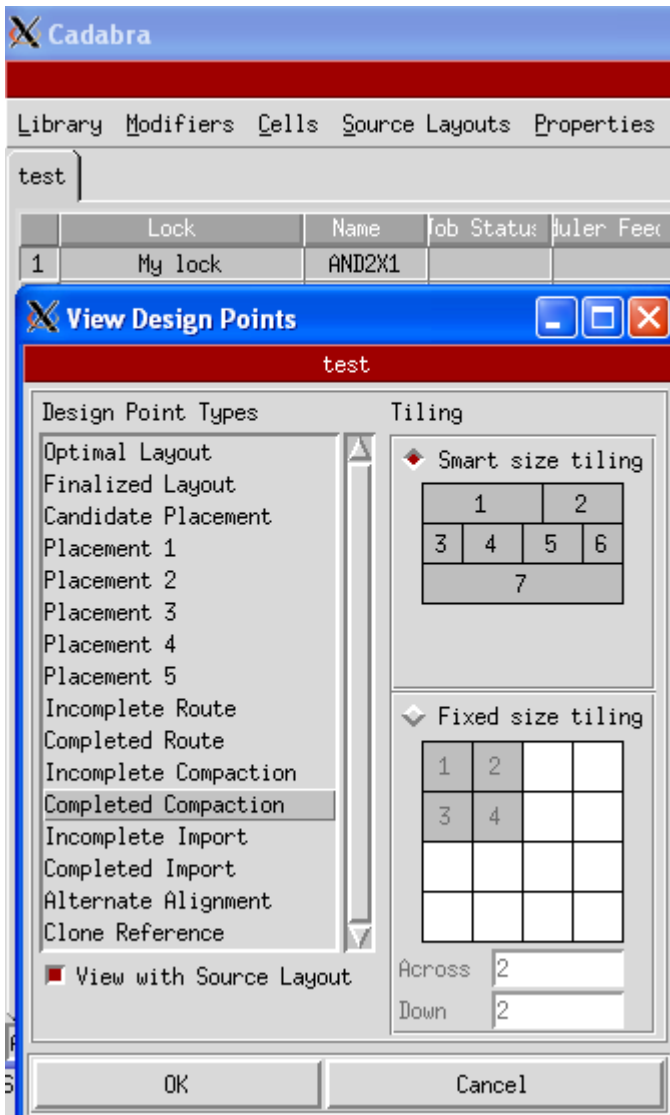
(5) Select the AL netlist type and then select AND2X1.al and click OK.



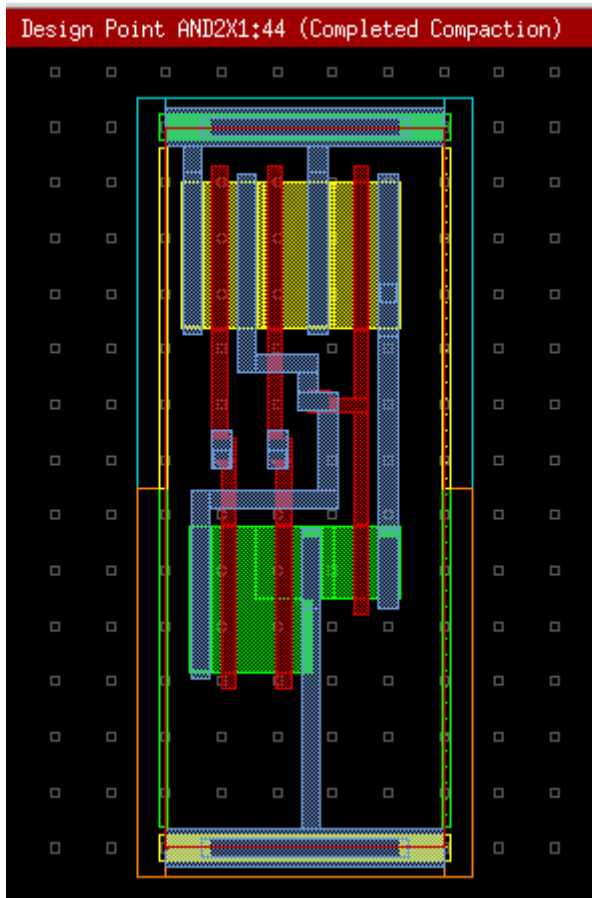
(6) In the main Cadabra window, highlight AND2X1 and then Select Cells→Run→ATL



- (7) When cadabra is finished, highlight AND2X1 and then select Cells → View and select “Completed Compaction” and click OK.



(8) Capture the layout view as shown:



(9) Repeat as desired for other cells.

(10) When finished, Select Library→Exit and click OK.