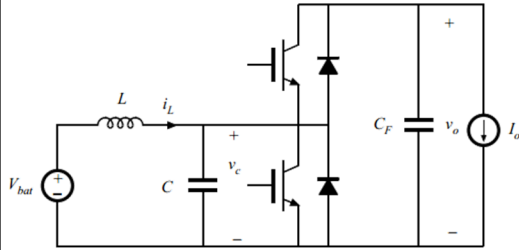




## Example 3: ZVS-QSW Boost Converter



Bidirectional drivetrain boost converter in electric vehicles

- $P_o = 12.5 \text{ kW}$
- $f_s = 100 \text{ kHz}$
- $V_{bat} = 250 \text{ V}$
- $V_o = 500 \text{ V}$
- $F = 0.5$

Goals:

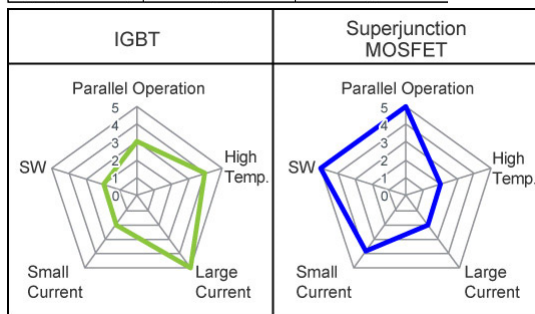
- Find  $L_r, C_r$  to achieve ZVS for all operating points
- Sketch small-signal model for control design
- Solve  $G_{vd}(s)$



## IGBT vs. MOSFET

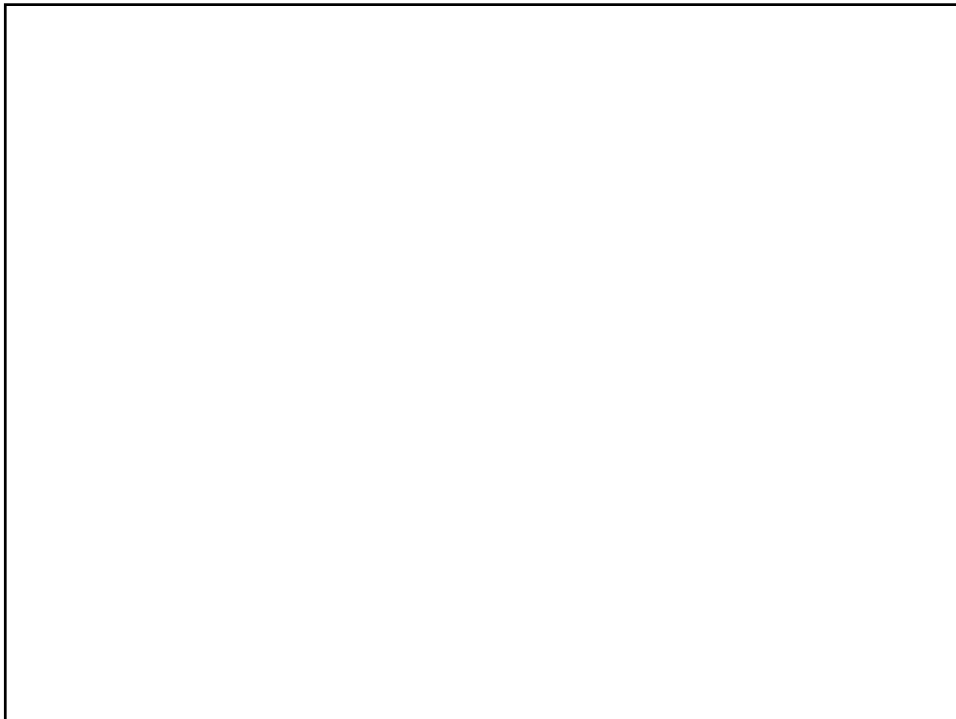
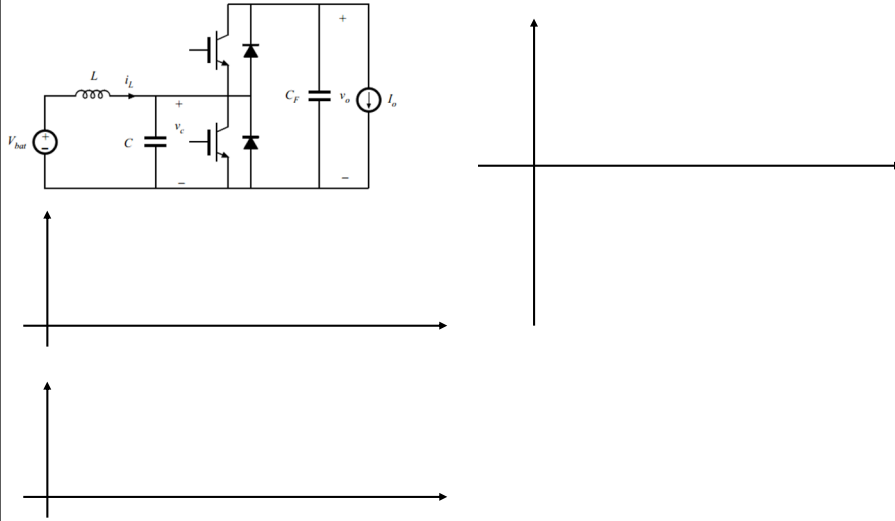
Rohm, "New Hybrid MOS Combines the Best Characteristics of MOSFETs and IGBTs Improved energy savings"

	IGBT	Superjunction MOSFET
V-I Characteristics		
Low Current	X	O
High Current	O	X
High-Speed Switching	Δ	O





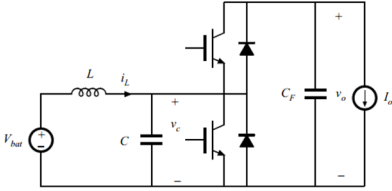
## ZVS-QSW Boost

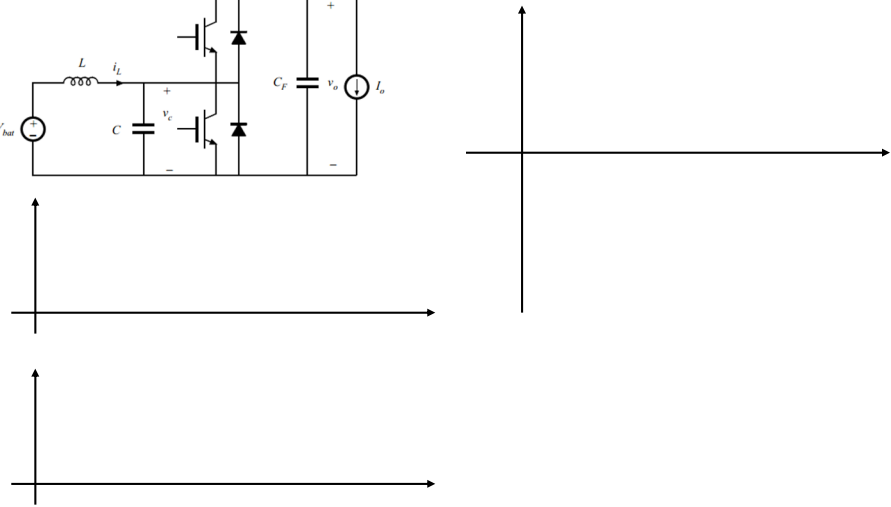


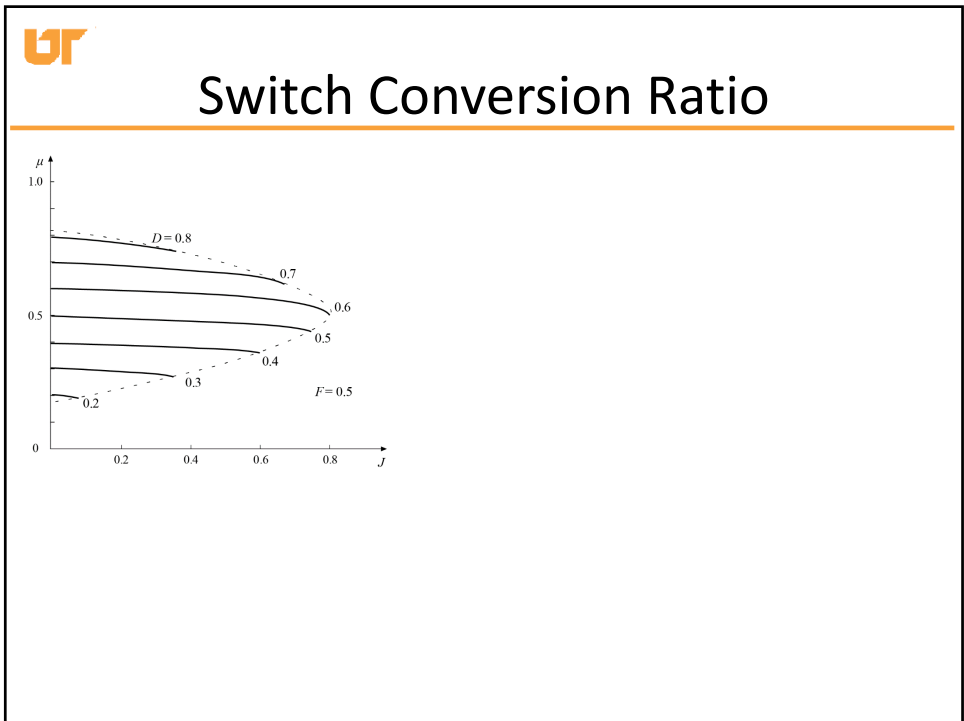
**UF**

## ZVS-QSW Boost

---

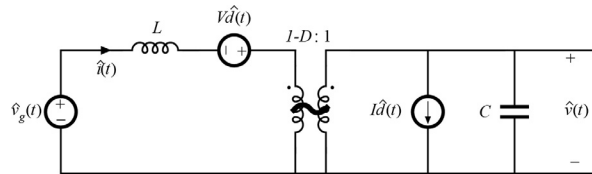








## Boost SSM



## PWM Converter Transfer Functions

