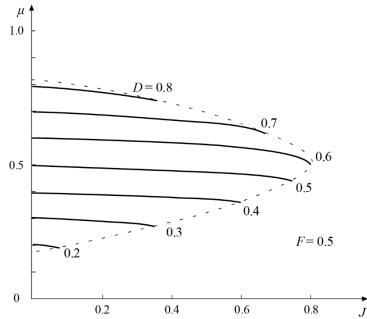
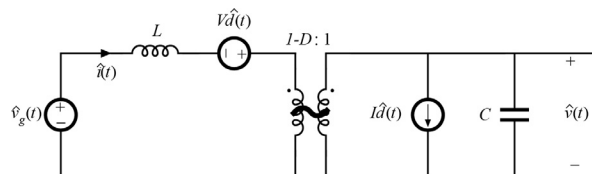




## Switch Conversion Ratio

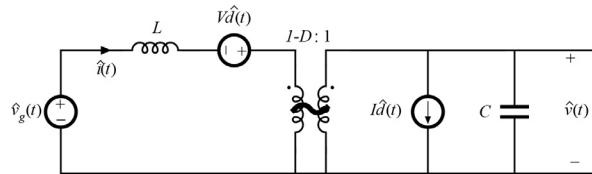



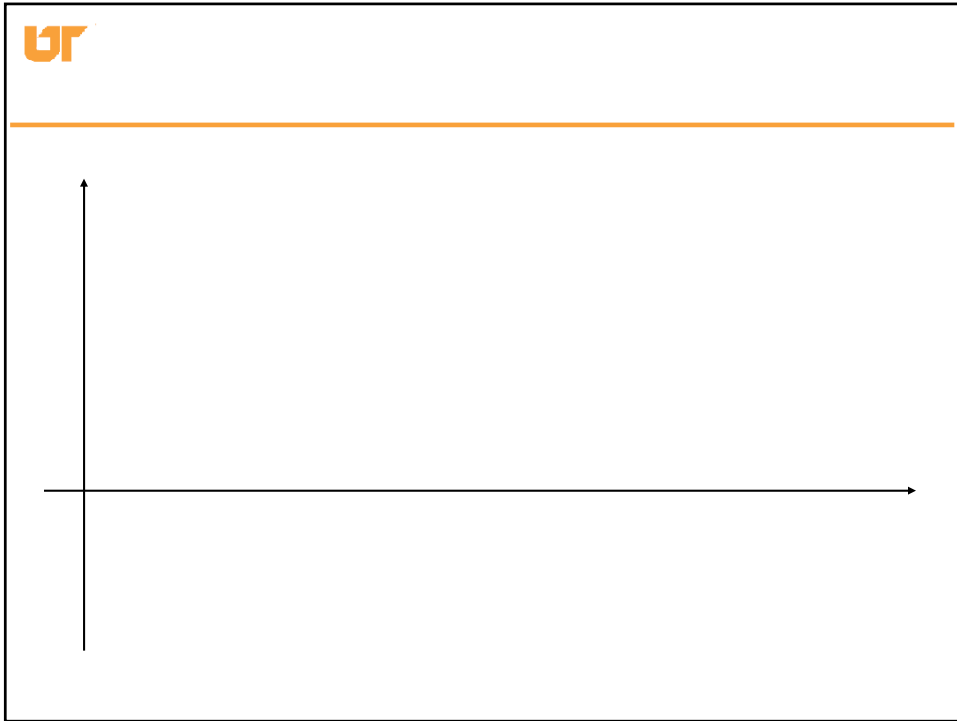
## Boost SSM





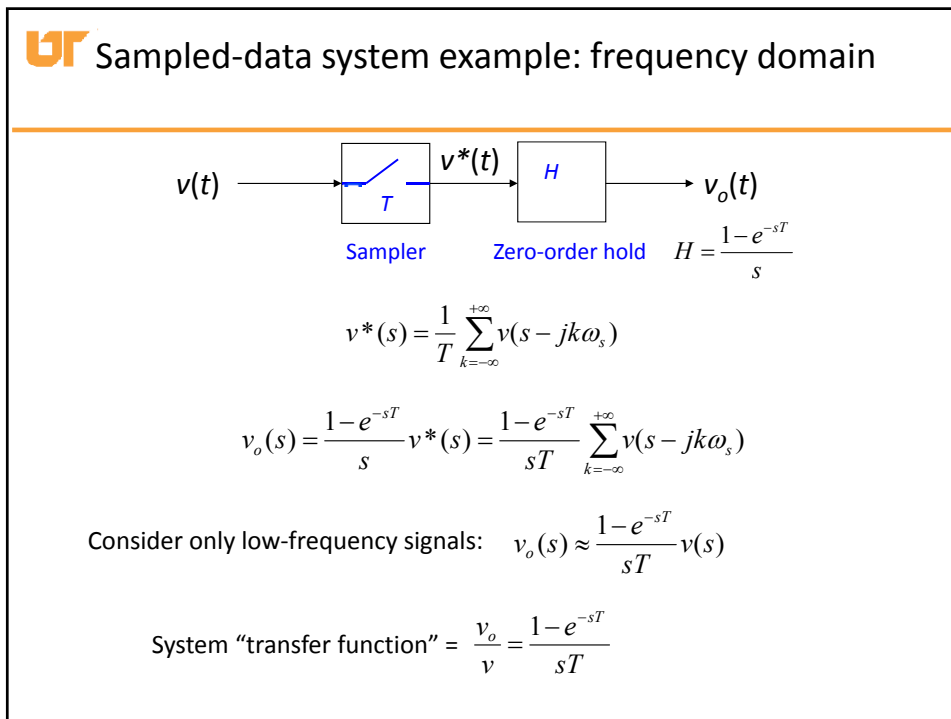
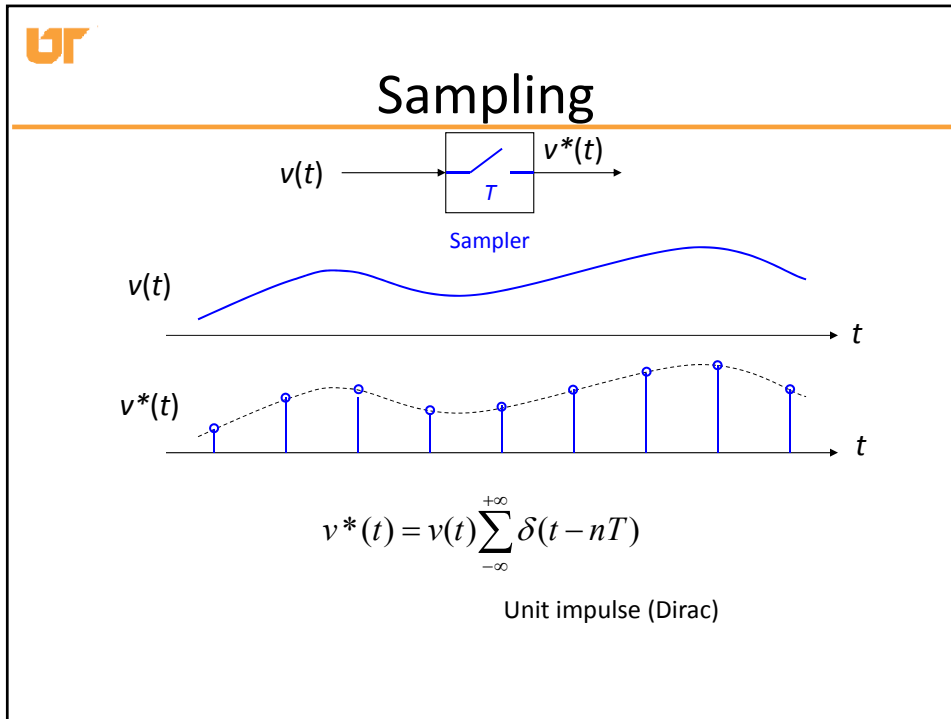
## PWM Converter Transfer Functions





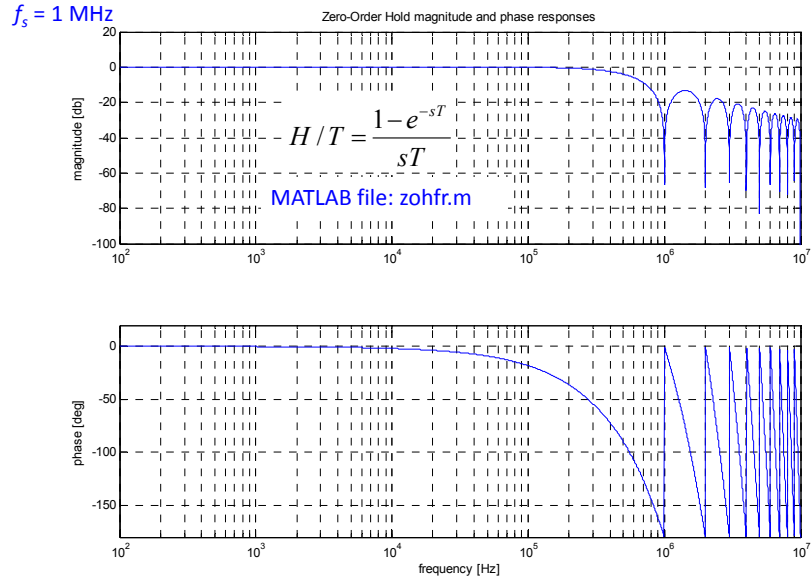
## Sampled Data Modeling of Power Converters

---

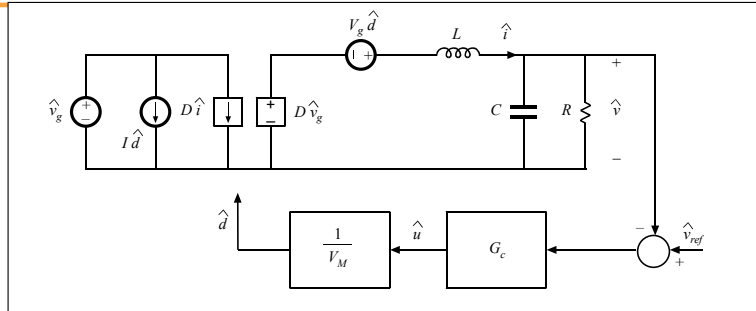




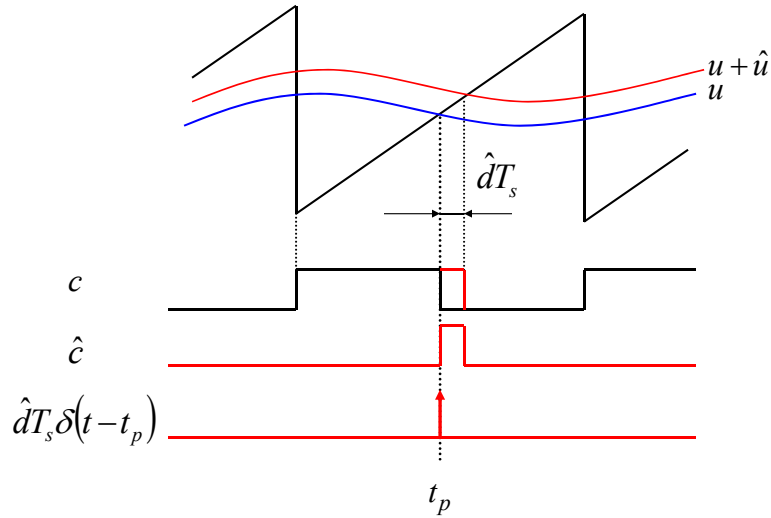
# Zero-order hold: frequency responses



How does any of this apply to converter modeling?



## UT PWM is a small-signal sampler!



PWM sampling occurs at  $t_p$  (i.e. at  $dT_s$ , periodically, in each switching period)