

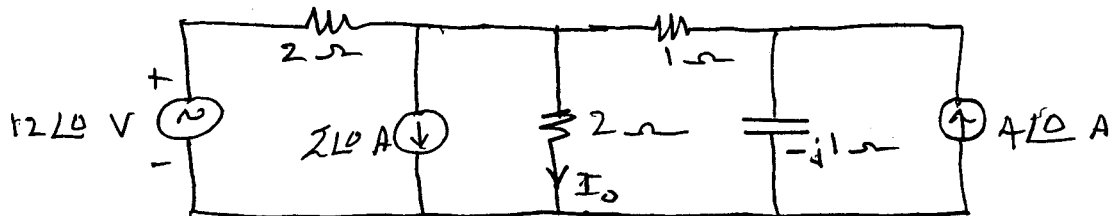
wkg: due Oct 15 Homework #6

Name _____

WORK the following:

6.1

Given the following circuit:

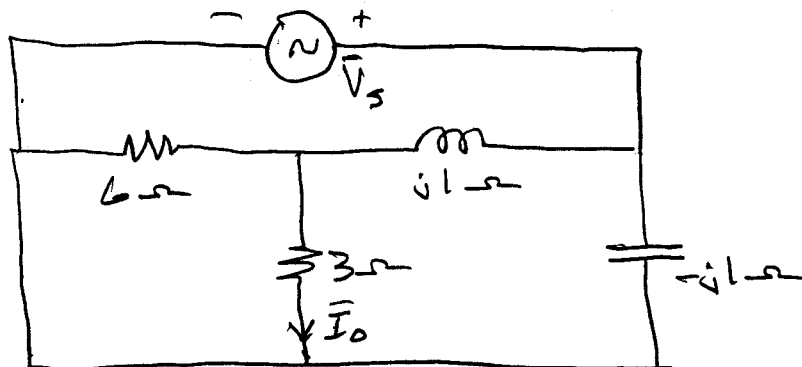


- (a) Find I_0 by using Nodal Analysis
 (b) Find I_0 using Thevenin's theorem

Ans: $\bar{I}_0 = 2 \angle -36.9^\circ \text{ A}$

$\bar{V}_{TH} = (4 - j4) \text{ V}$, $\bar{Z}_{TH} = 0.8 - j0.4 \Omega$

6.2 In the following circuit $\bar{I}_0 = 2 \angle 0 \text{ A}$.
 Find \bar{V}_s .



Ans: $\bar{V}_s = (6 + j3) \text{ V}$