

ECE471-571 – Lecture 1

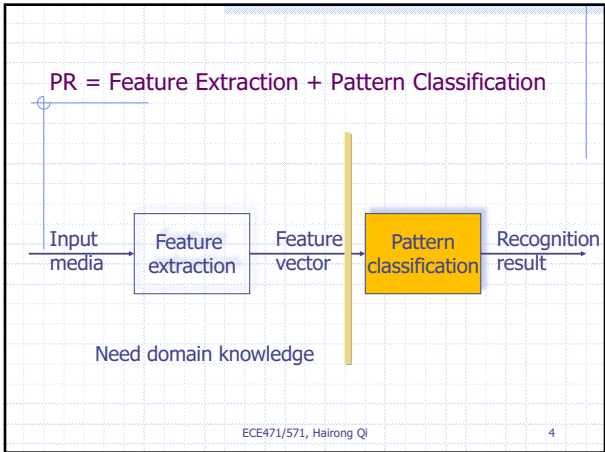
Introduction

Statistics are used much like a drunk
uses a lamppost: for support, not
illumination

-- Vin Scully

Terminology

- ◆ Feature
- ◆ Sample
- ◆ Dimension
- ◆ Pattern classification (PC)
- ◆ Pattern recognition (PR)



An Example

- ◆ fglass.dat
 - forensic testing of glass collected by German on 214 fragments of glass
 - Data file has 10 columns
 - RI – refractive index
 - Na – weight of sodium oxide(s)
 - ...
 - Type

RI	Na	Mg	Al	Si	K	Ca	Ba	Fe	type
1.52101	13.64	4.49	1.10	71.78	0.06	8.75	0.00	0.00	1
1.51761	13.89	3.60	1.36	72.73	0.48	7.83	0.00	0.00	1

ECE471/571, Hairong Qi 5

On the Different Courses at UT

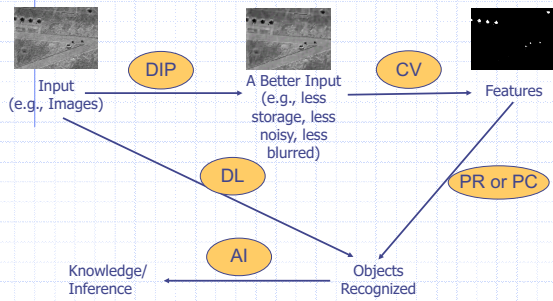
- ◆ Machine Learning (ML) (CS425/528)
- ◆ Pattern Recognition (PR) (ECE471/571)
- ◆ Data Mining (DM) (Big Data) (CS526)
- ◆ Deep Learning (DL) (ECE599/592)
- ◆ From Google Trends
- ◆ Digital Image Processing (DIP) (ECE472/572)
- ◆ Computer Vision (CV) (ECES73)

Mar. 2015, Tombone's Computer Vision Blog:
<http://www.computervisionblog.com/2015/03/deep-learning-vs-machine-learning-vs.html>

Sept. 2017: <https://www.alibabacloud.com/blog/Deep-Learning-vs-Machine-Learning-vs-Pattern-Recognition-207110>

ECE471/571, Hairong Qi 6

A Graphical Illustration

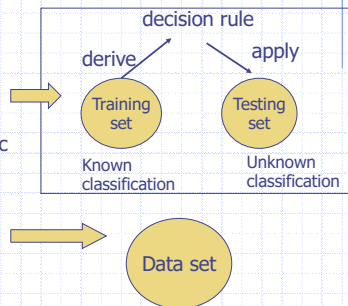


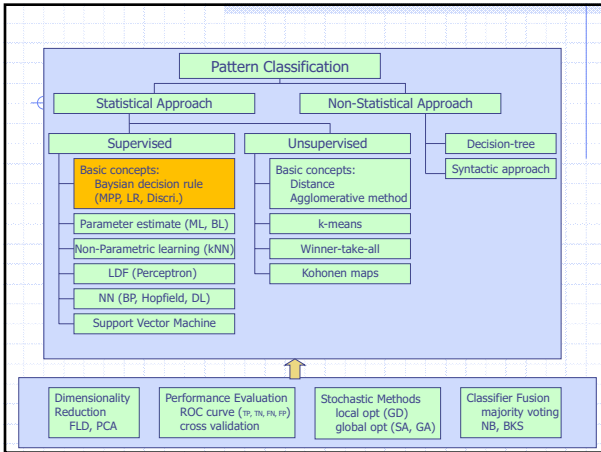
Conferences

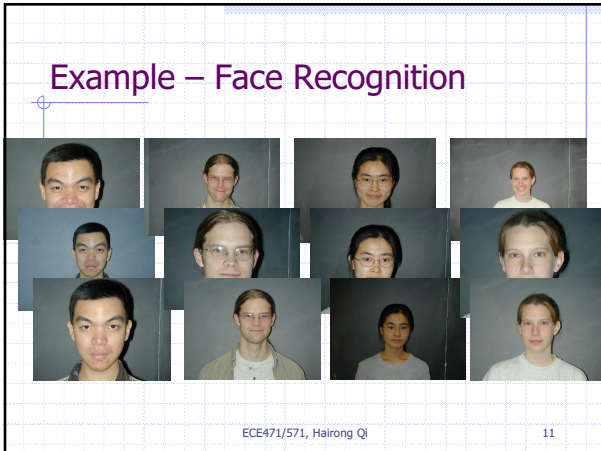
- ◆ Computer Vision and Pattern Recognition (CVPR)
- ◆ International Conference on Pattern Recognition (ICPR)

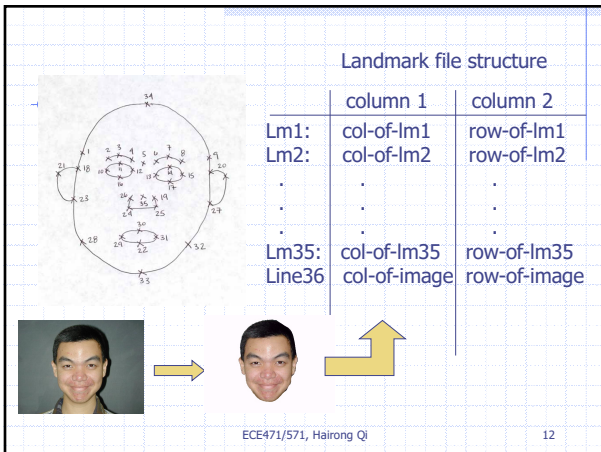
Different Approaches - Overview

- ◆ Supervised classification
 - Parametric
 - Non-parametric
- ◆ Unsupervised classification
 - clustering









Example - Network Intrusion Detection

◆ KDD Cup 99

◆ Features

- basic features of an individual TCP connection, such as its duration, protocol type, number of bytes transferred and the flag indicating the normal or error status of the connection
- domain knowledge
- 2-sec window statistics
- 100-connection window statistics

ECE471/571, Hairong Qi

13

Example - Gene Analysis for Tumor Classification

◆ Early detection of cancer

◆ Tumor classification

- Observation of abnormal consequences of tumor development
- Physical examination (X-rays)
- Molecular marker detection

◆ Tumor gene expression profiles: molecular fingerprint

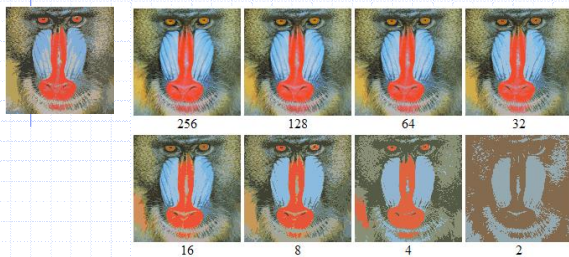
◆ Challenge: high dimensionality (in the order of thousands)

- 16,063 known human genes and expressed sequence tags

ECE471/571, Hairong Qi

14

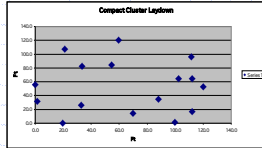
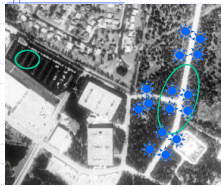
Example - Color Image Compression



ECE471/571, Hairong Qi

15

Example - Automatic Target Recognition



Ford 250

Harley Motorcycle

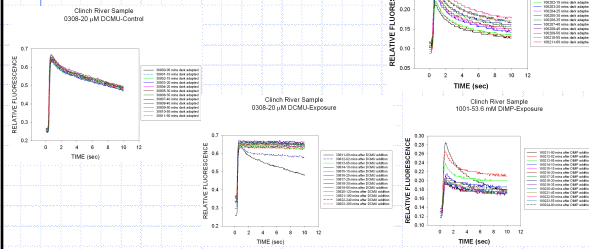
Ford 350

Suzuki Vitara



Example – Bio/chemical Agent Detection in Drinking Water

- ◆ x-axis: time (seconds)
- ◆ y-axis: relative fluorescence induction



Assignment and Tests

- ◆ Programming and Reporting
 - 4 Regular projects
 - ◆ C/C++/Python (major)
 - ◆ Matlab or C/C++/Python (non-major)
 - 1 Final project (C/C++/Python or Matlab)
 - With milestone deliverables
 - With final presentation
- ◆ 4~5 Homework (C/C++/Python or Matlab)
- ◆ 2 Tests
