

E. Segmentation

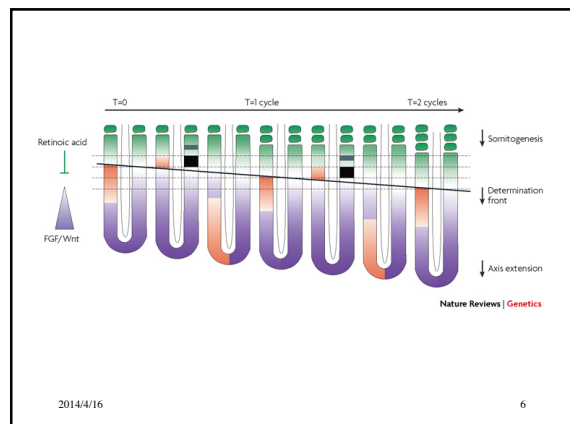
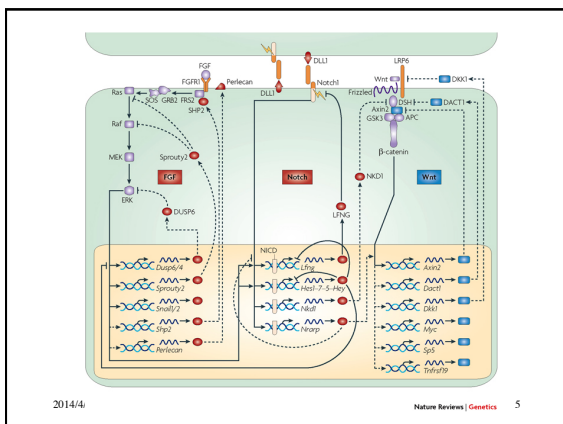
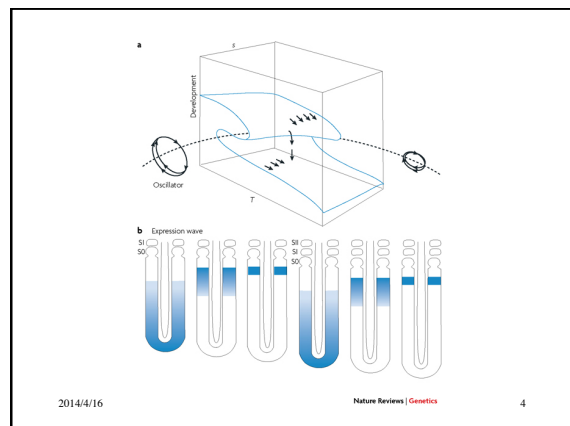
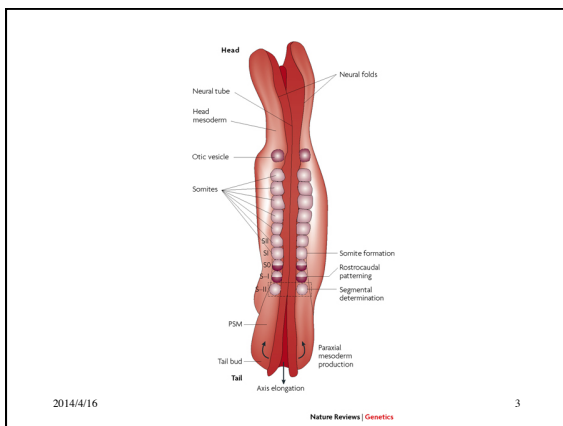
(in embryological development)

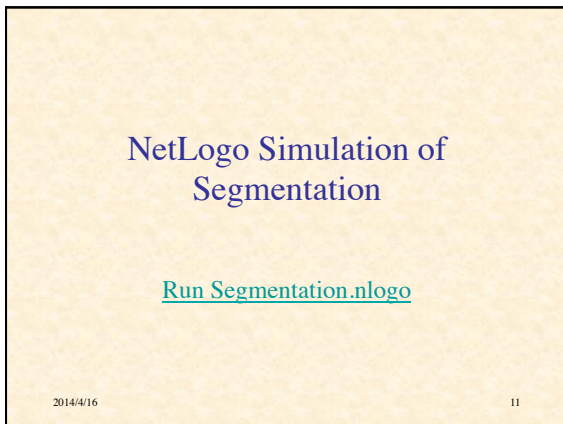
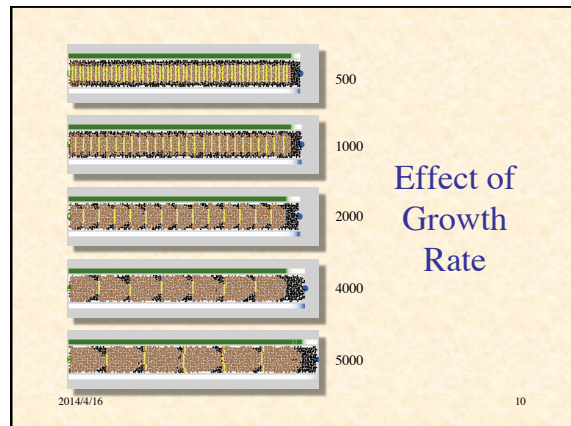
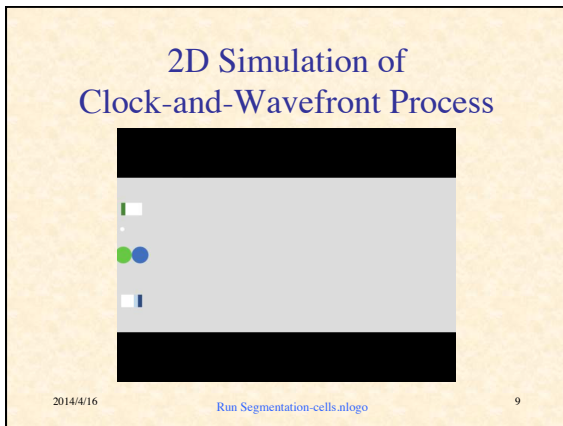
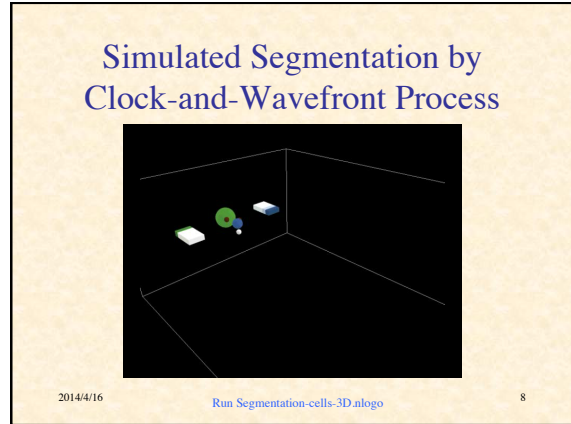
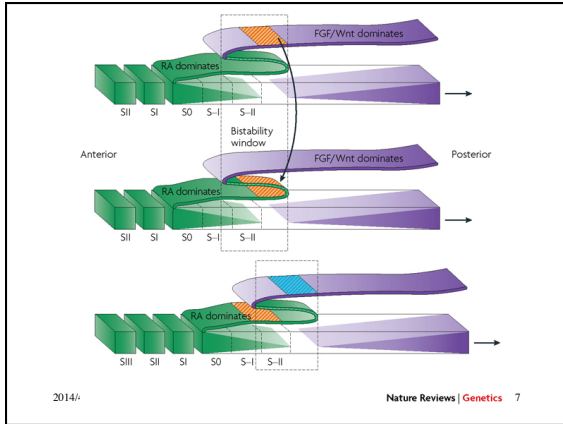
2014/4/16 1

Vertebrae

- Humans: 33, chickens: 55, mice: 65, corn snake: 315
- Characteristic of species
- How does an embryo “count” them?
- “Clock and wavefront model” of Cooke & Zeeman (1976).

2014/4/16 2





Segmentation References

1. Cooke, J., & Zeeman, E.C. (1976). A clock and wavefront model for control of the number of repeated structures during animal morphogenesis. *J. Theor. Biol.* **58**: 455–76.
2. Dequéant, M.-L., & Pourquié, O. (2008). Segmental patterning of the vertebrate embryonic axis. *Nature Reviews Genetics* **9**: 370–82.
3. Gomez, C., Özbudak, E.M., Wunderlich, J., Baumann, D., Lewis, J., & Pourquié, O. (2008). Control of segment number in vertebrate embryos. *Nature* **454**: 335–9.

VIA

2014/4/16 12