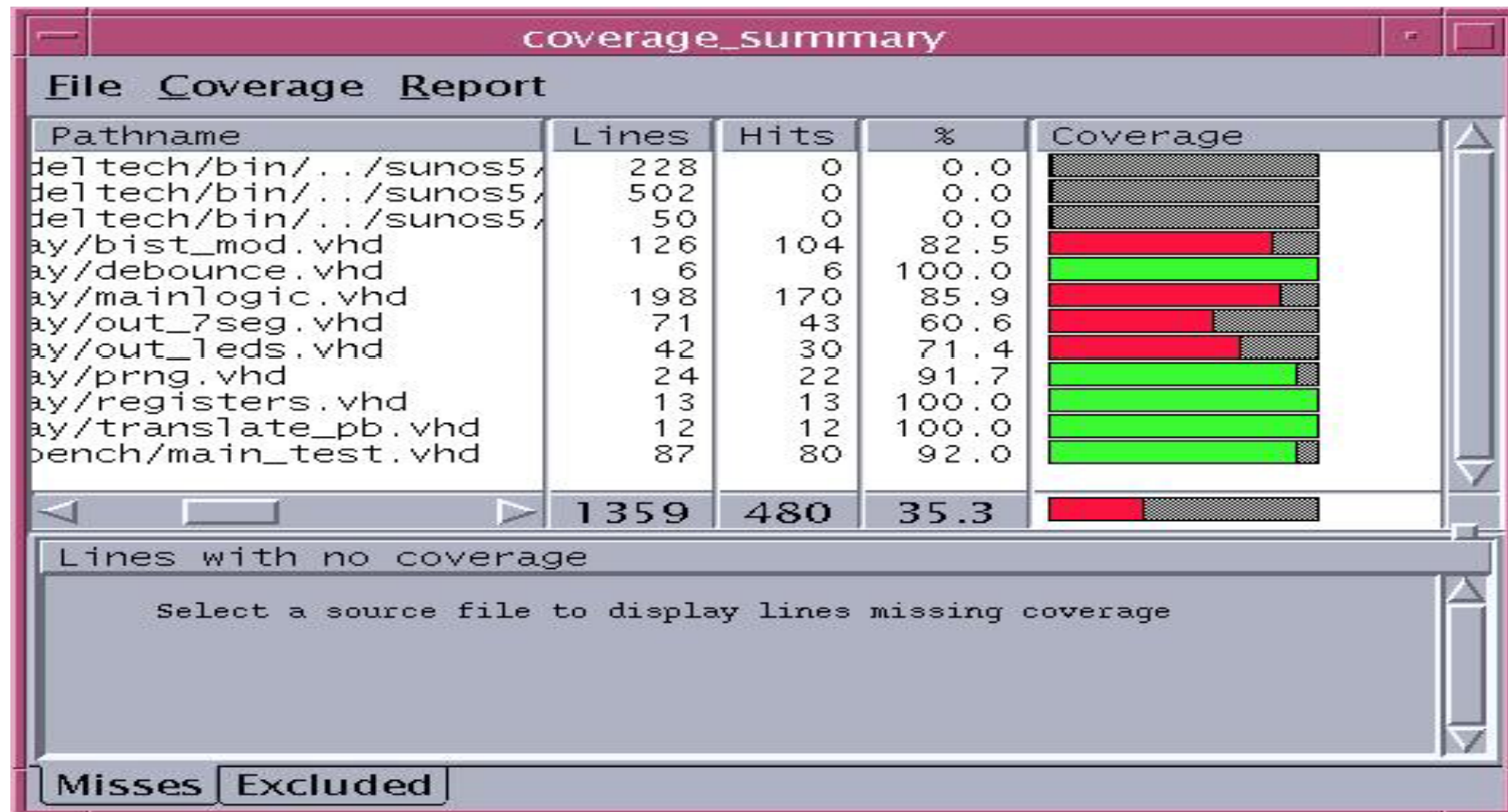


# COVERAGE-DRIVEN TESTS

The simulator can produce coverage reports and identify missed statements in the code.



# ASSERTION-BASED VERIFICATION

The tester code should include stimuli and responses.

“Failure” stops simulation while “warning” does not.

“Note” is used to document a correct response.

```
wait_clock(16);
IF (left_seg = X"6")
-- check second state of 7-segment display
THEN
ASSERT false
REPORT "Output signals set correctly (7-segment second state)"
SEVERITY note;
ELSE
ASSERT false
REPORT "Output not set correctly (7-segment second state)"
SEVERITY warning;
END IF;
```