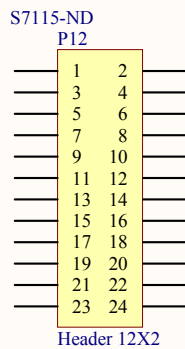
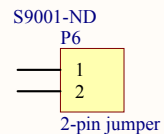
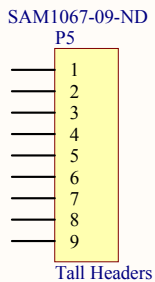
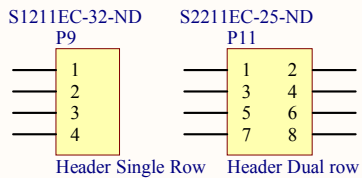
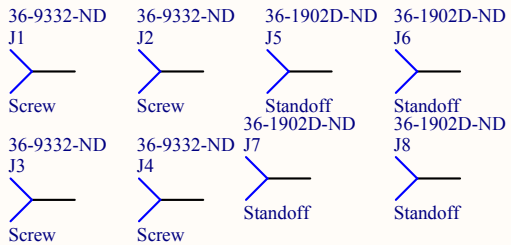


Title		
Size	Number	Revision
A		
Date:	11/1/2017	Sheet of
File:	H:\PCBs\...\Motherboard.SchDoc	Drawn By:



Title		
Size	Number	Revision
A		
Date:	11/1/2017	Sheet of
File:	H:\PCBs\...\Mechanical.SchDoc	Drawn By:

5565.00

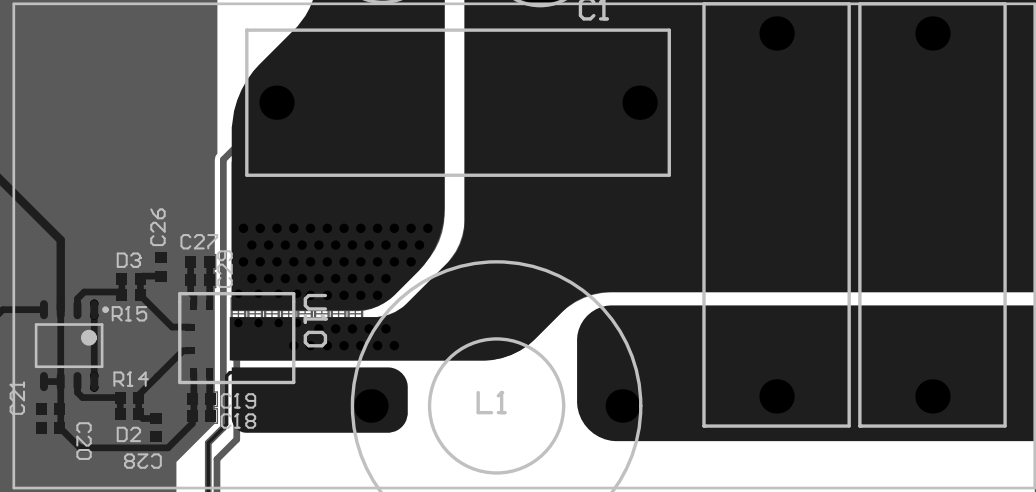
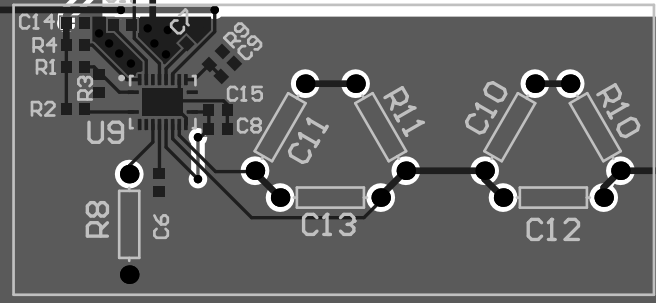
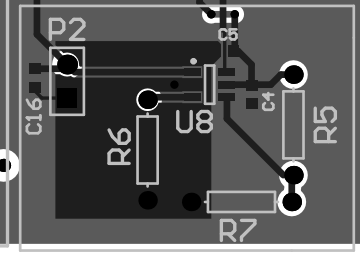
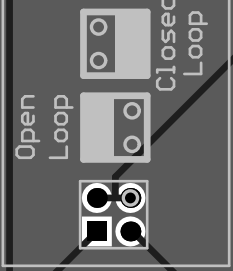
3655.00

Umod

VCC

GND

5V



Vg

GND

C3

C2

Vout

GND

Bill of Materials

<Parameter Title not found>

Source Data From: GaN_Motherboard_LMG5200.PrjPcb
 Project: GaN_Motherboard_LMG5200.PrjPcb
 Variant: None

Creation Date: 11/1/2017 1:13:33 PM
 Print Date: 01-Nov-17 1:13:40 PM
 Production Quantity: 1
 Currency: <none>

Footprint	Comment	LibRef	Designator	Description	Quantity	#Column Nam	#Column Name Error:Su	#Column Name Error:	#Column Name Error:	#Column Name Error:	#Column Name Error:	#Column Name Error:Manufacturer Part Num
R60DR52205040J 1608[0603]		Cap Semi	C1, C2, C3	Capacitor (Semiconductor SIM Model)	3							
		Cap Semi	C4, C5, C6, C7, C8, C9, C14, C15, C16, C17, C18, C19, C20, C21, C22, C23, C24, C25, C26, C27, C28, C29, C30, C31, C32, C33	Capacitor (Semiconductor SIM Model)	26							
AXIAL-0.3 SOT23 1608[0603]	D Zener	Cap Semi	C10, C11, C12, C13	Capacitor (Semiconductor SIM Model)	4							
Mounting Hole	Diode	D Zener	D1	Zener Diode	1							
	Screw	Diode	D2, D3	Default Diode	2							
Standoff	Socket	Socket	J1, J2, J3, J4	Socket	4							
	Socket	Socket	J5, J6, J7, J8	Socket	4							
M8805-ND	Inductor	Inductor	L1	Inductor	1							
HDR2X2	Header 2X2	Header 2X2	P1	Header, 2-Pin, Dual row	1							
HDR1X2	Header 2	Header 2	P2	Header, 2-Pin	1							
HDR1X8	Tall Headers	Header 9	P5	Header, 9-Pin	1							
	2-pin jumper	Header 2	P6	2-pin jumper	1							
Row	Header Single Row	Header 4	P9	Header Single Row	1							
	Header Dual row	Header 4X2	P11	Header Dual row	1							
1608[0603]	Header 12X2	Header 12X2	P12	2x12 Female Header	1							
	Res 1	Res1	R1, R2, R3, R4, R9, R12, R14, R15	Resistor	8							
AXIAL-0.3 PTA4553-	Res 1	Res1	R5, R6, R7, R8, R10, R11	Resistor	6							
2015CPB103-ND	Res Tap	Res Tap	R13	Tapped Resistor	1							
Banana Jack	Banana Jack	Banana Jack	U1, U2, U3, U4, U5, U6	575-8	6							
SOIC127P600-8N	LM27222	LM27222	U7	Half Dridge Driver	1							
LTC6992	LTC6992	LTC6992	U8	Voltage Controller PWM	1							
TPS40170	TPS40170	TPS40170	U9		1							
LMG5200	LMG5200	LMG5200	U10	GaN Half-Bridge + Driver	1							
					77							
Approved										\$	-	
Notes												

--	--	--