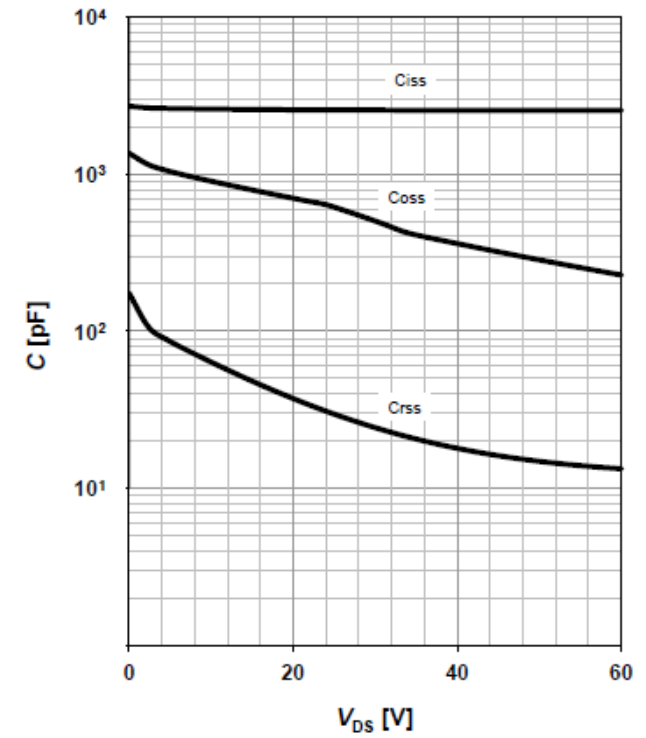
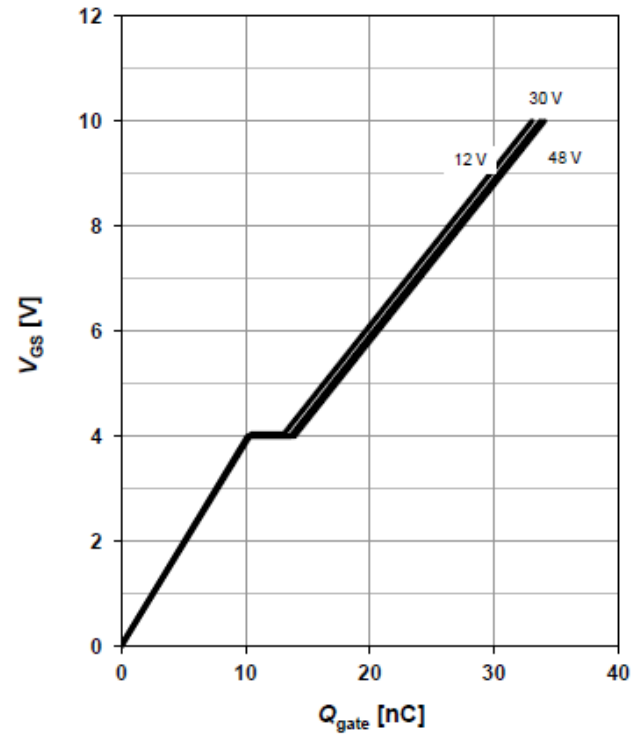
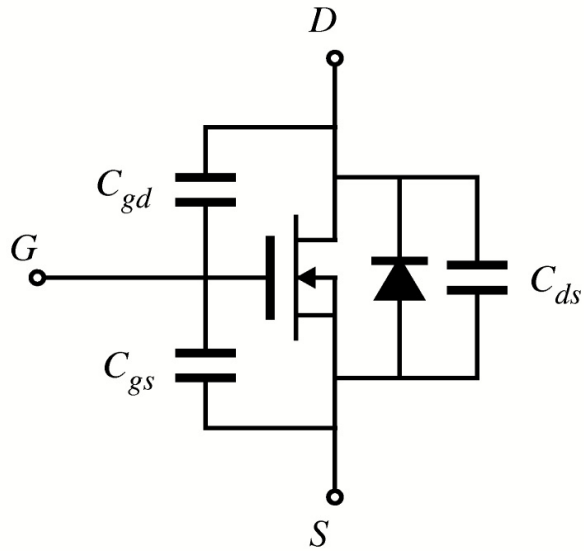
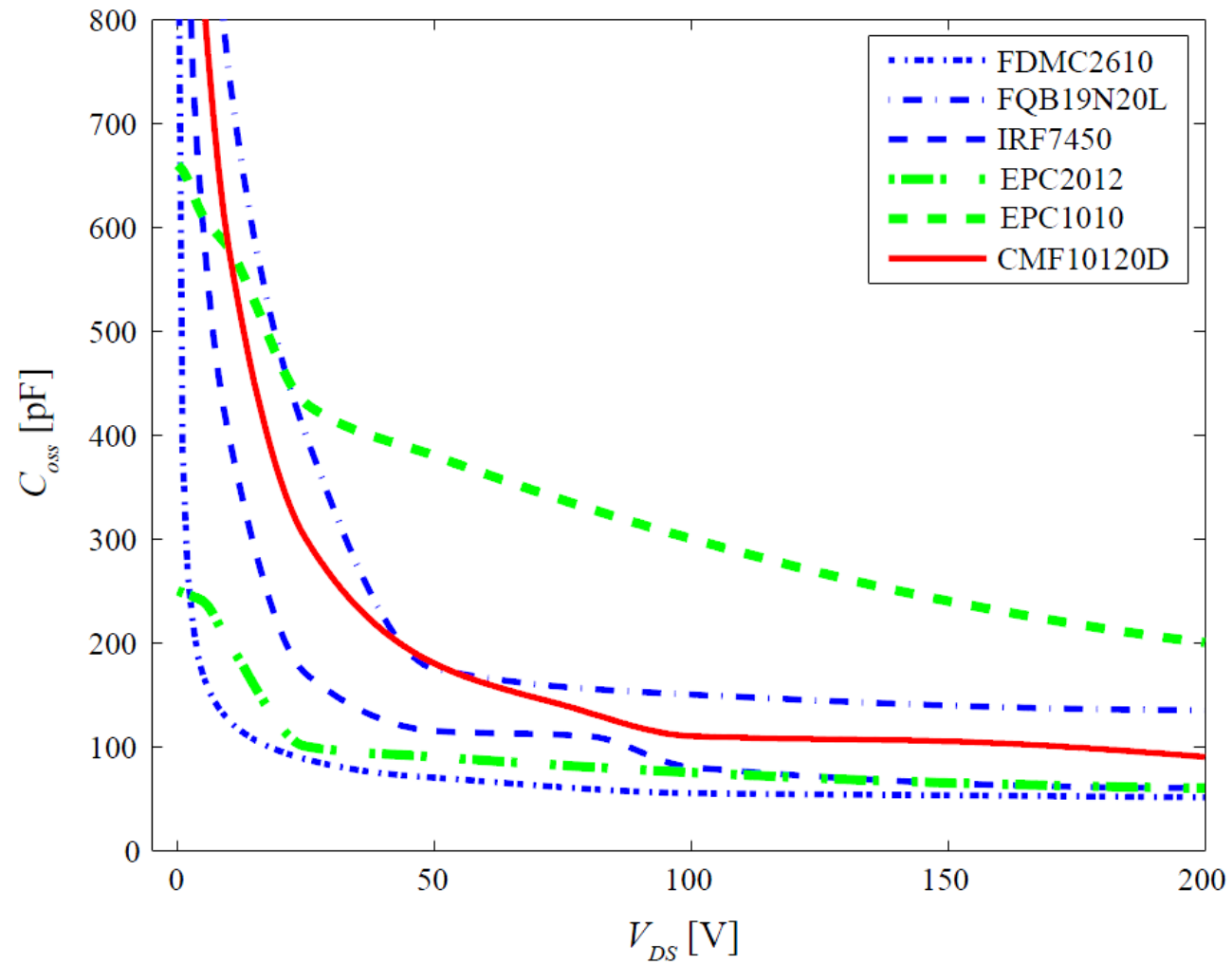


# MOSFET Equivalent Circuit

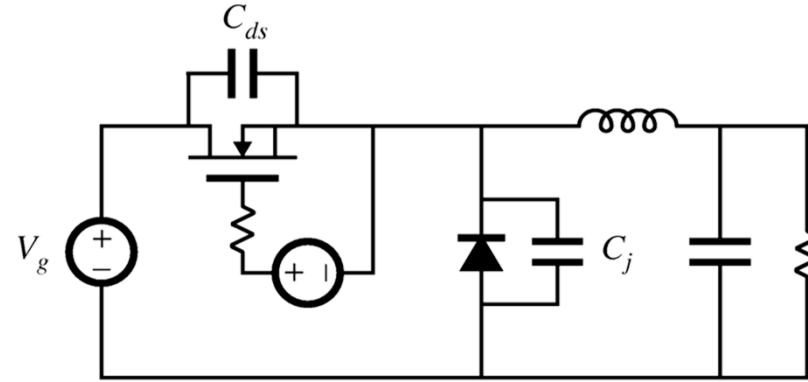


# Example $C_{oss}$ Curves



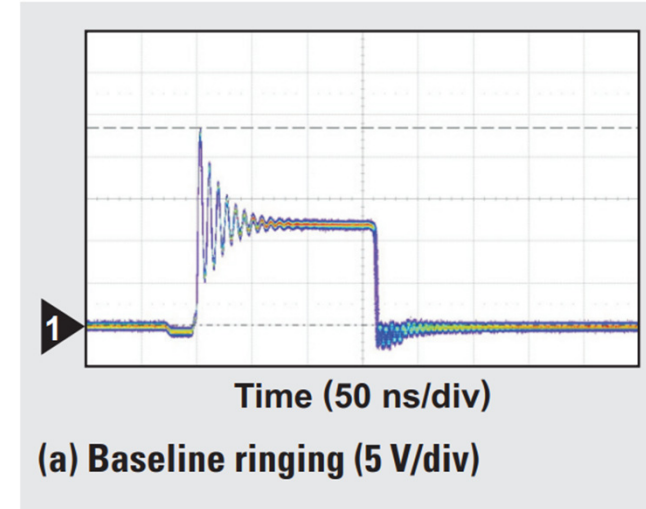
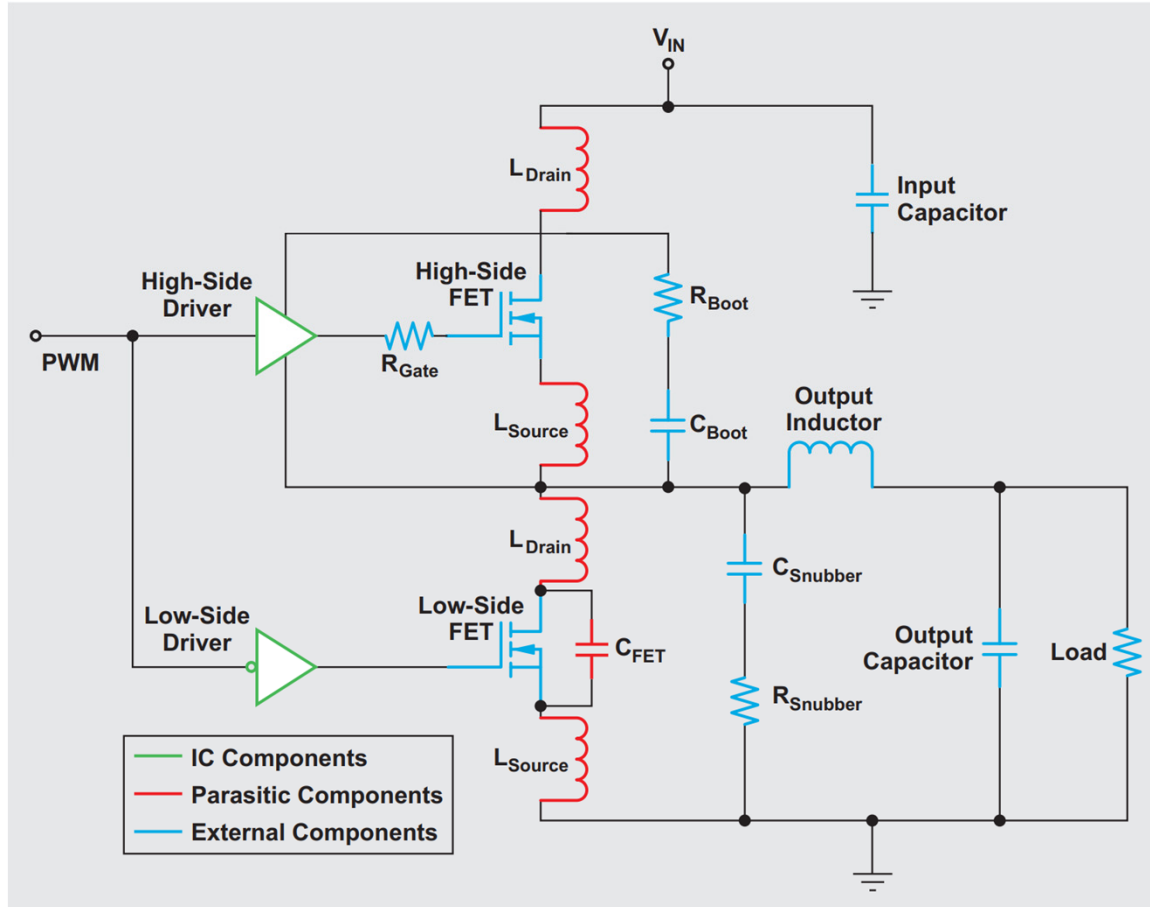
# Device Figures-of-Merit

# Switching Losses: Output Capacitance

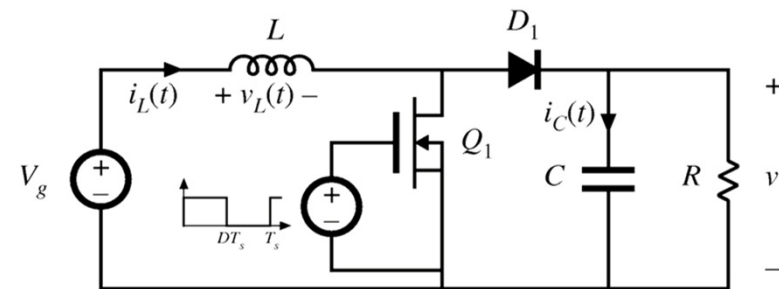
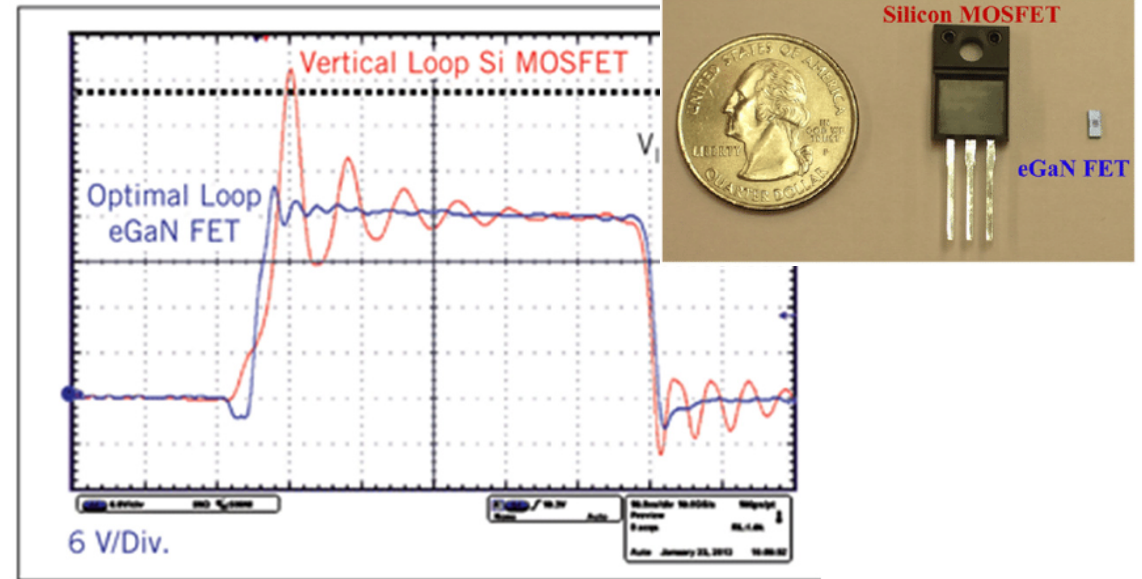
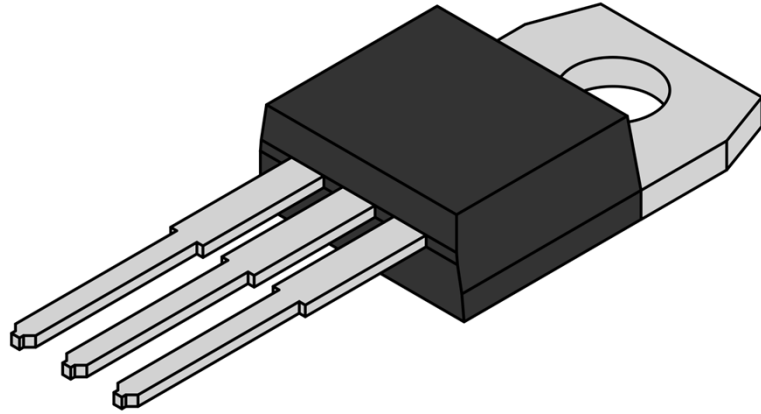


# Ideal Switching

# Experimental Switching Waveforms



# Device Packaging and Layout



# The Double Pulse Test

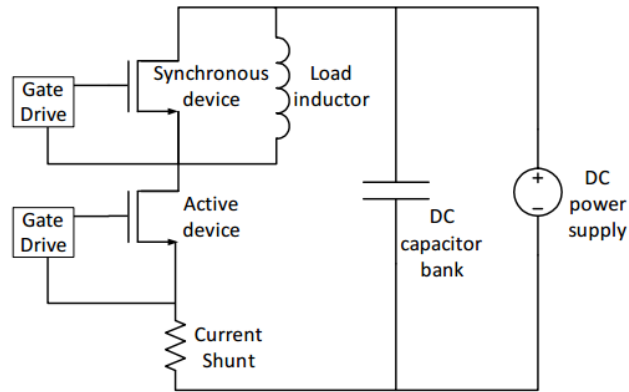


Fig. 7. Double pulse test circuit schematic.

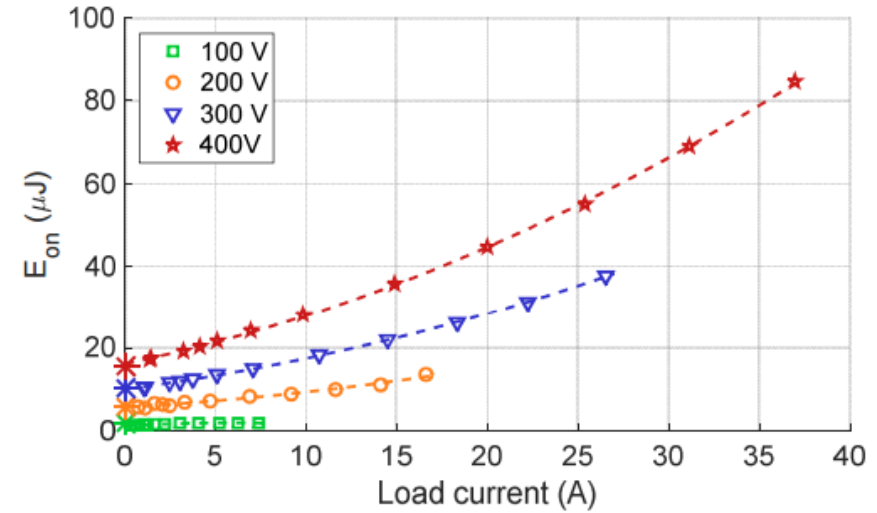
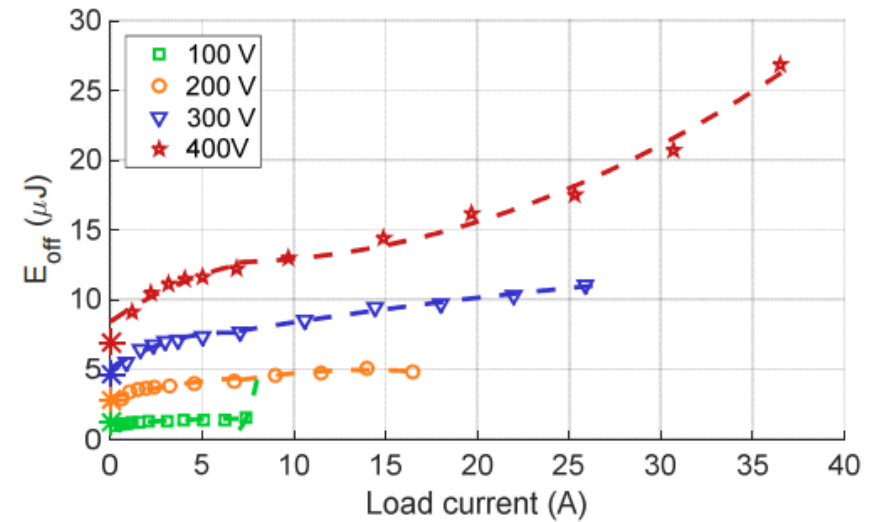
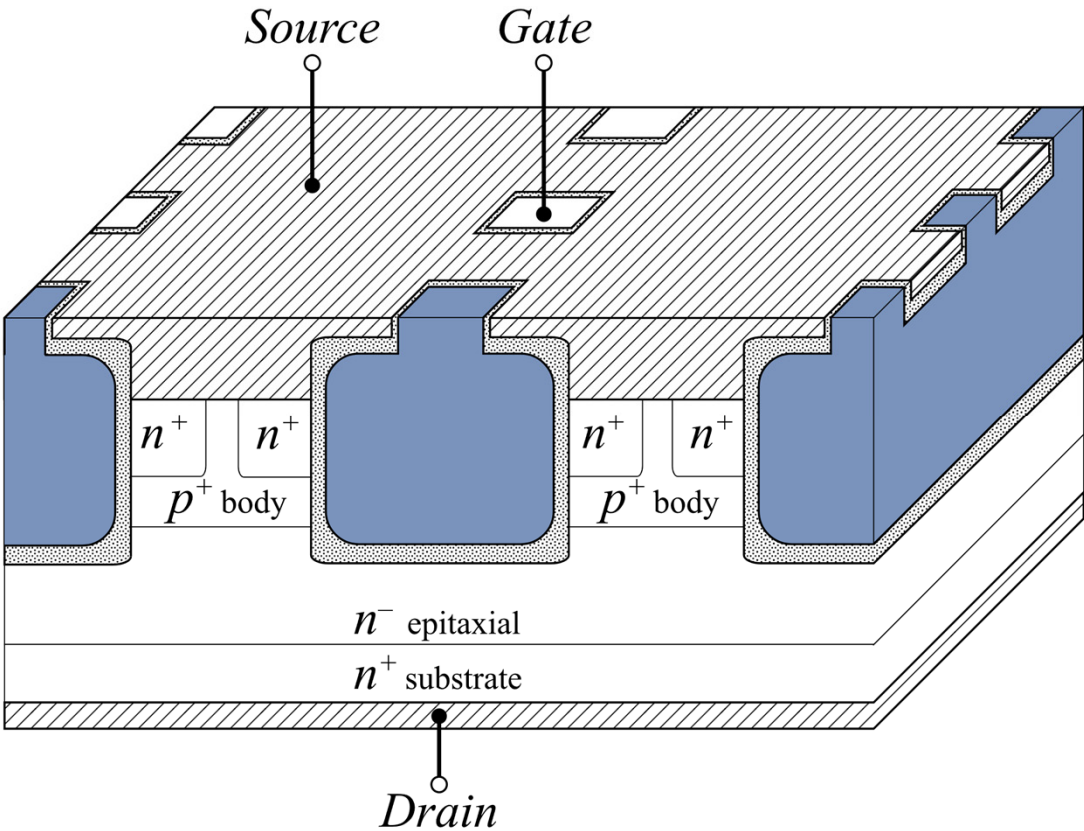
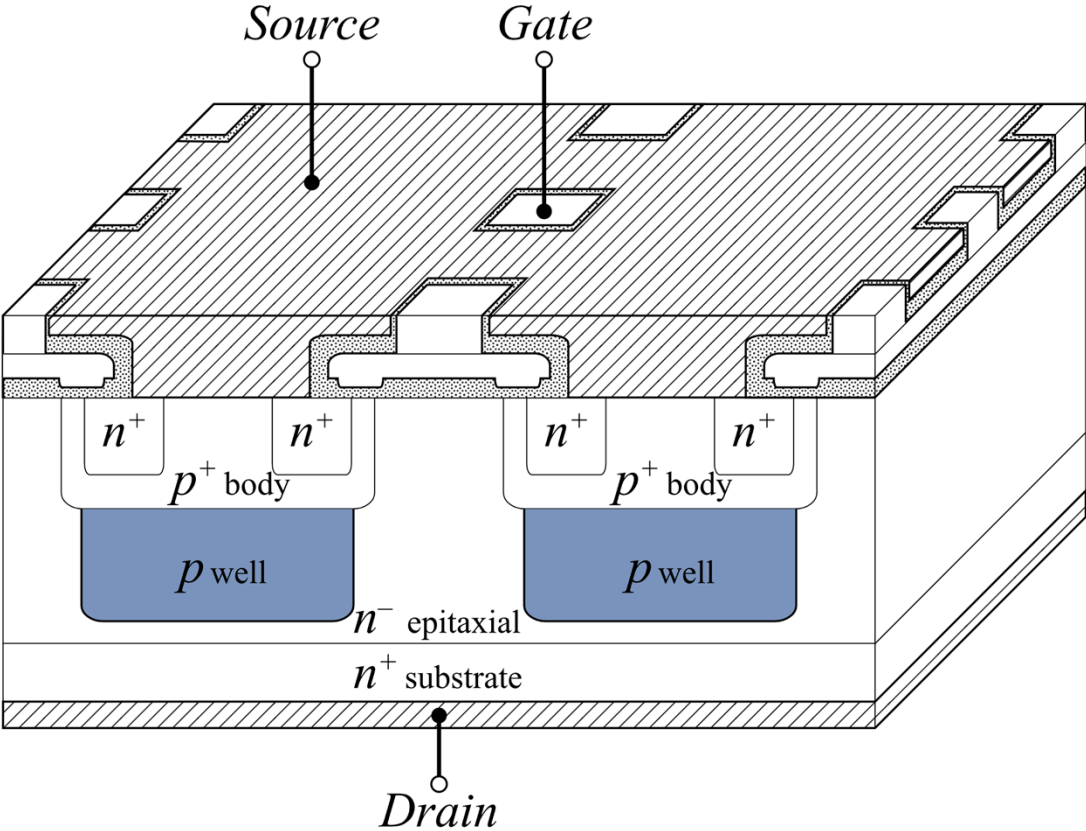


Fig. 16. Turn-on energy  $E_{on}$  at 25 °C.

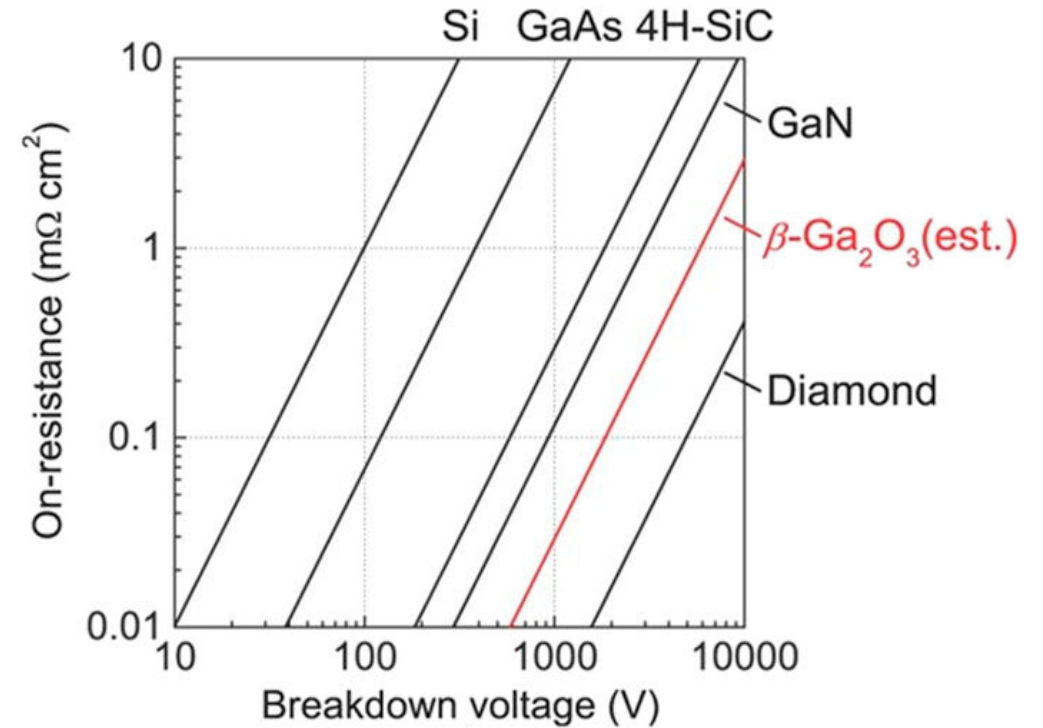
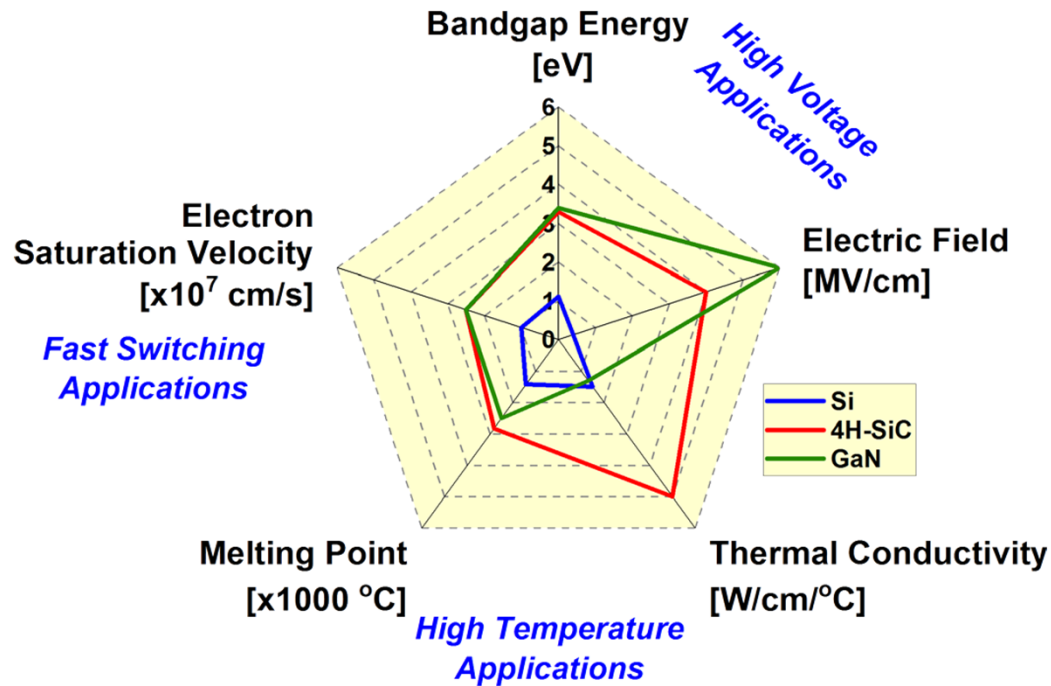




# Other Device Structures



# Wide Bandgap Materials



<https://potential.eecs.utk.edu/About.php?topic=PowerSemiconductors>

# GaN HEMTs

