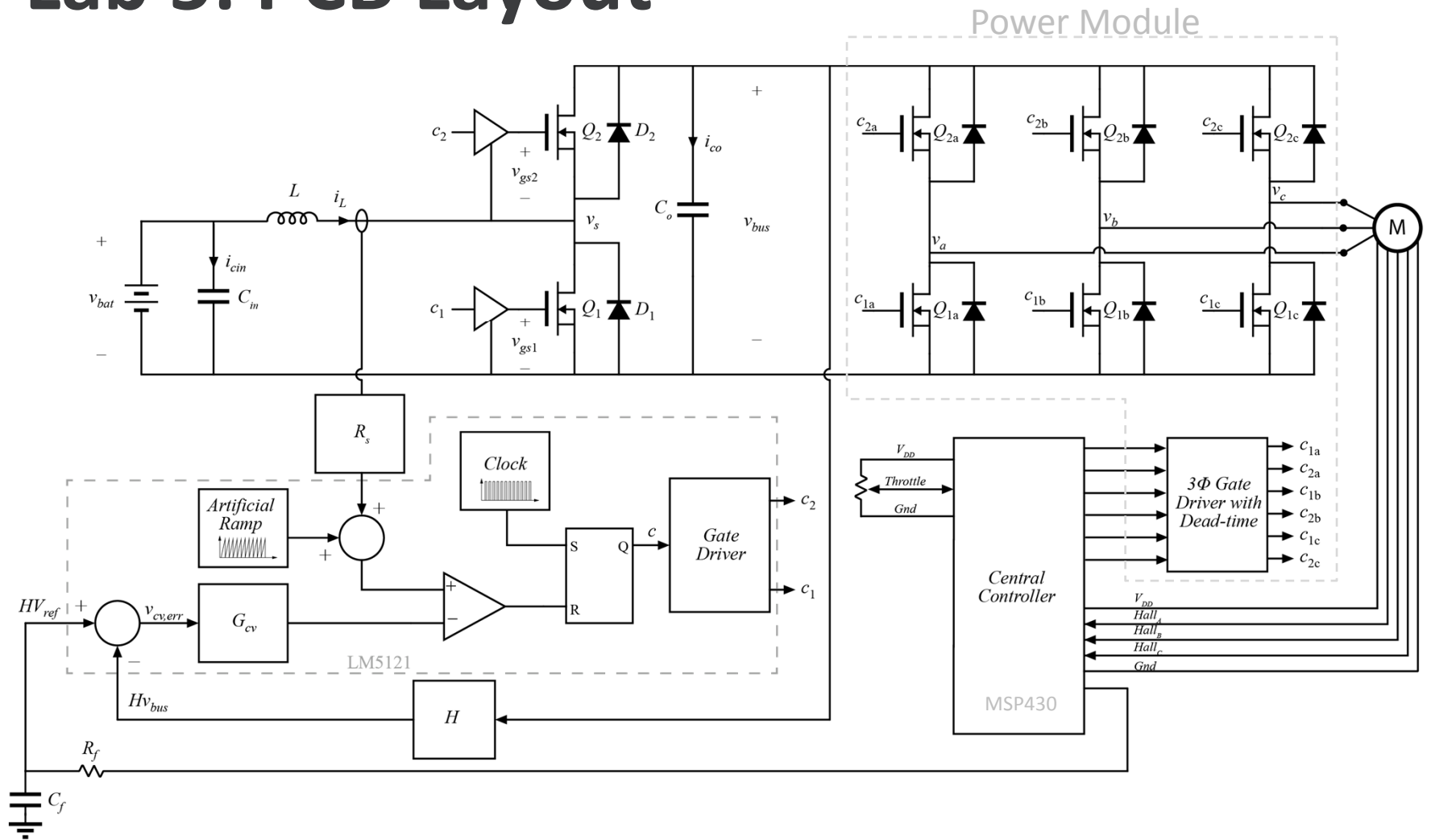


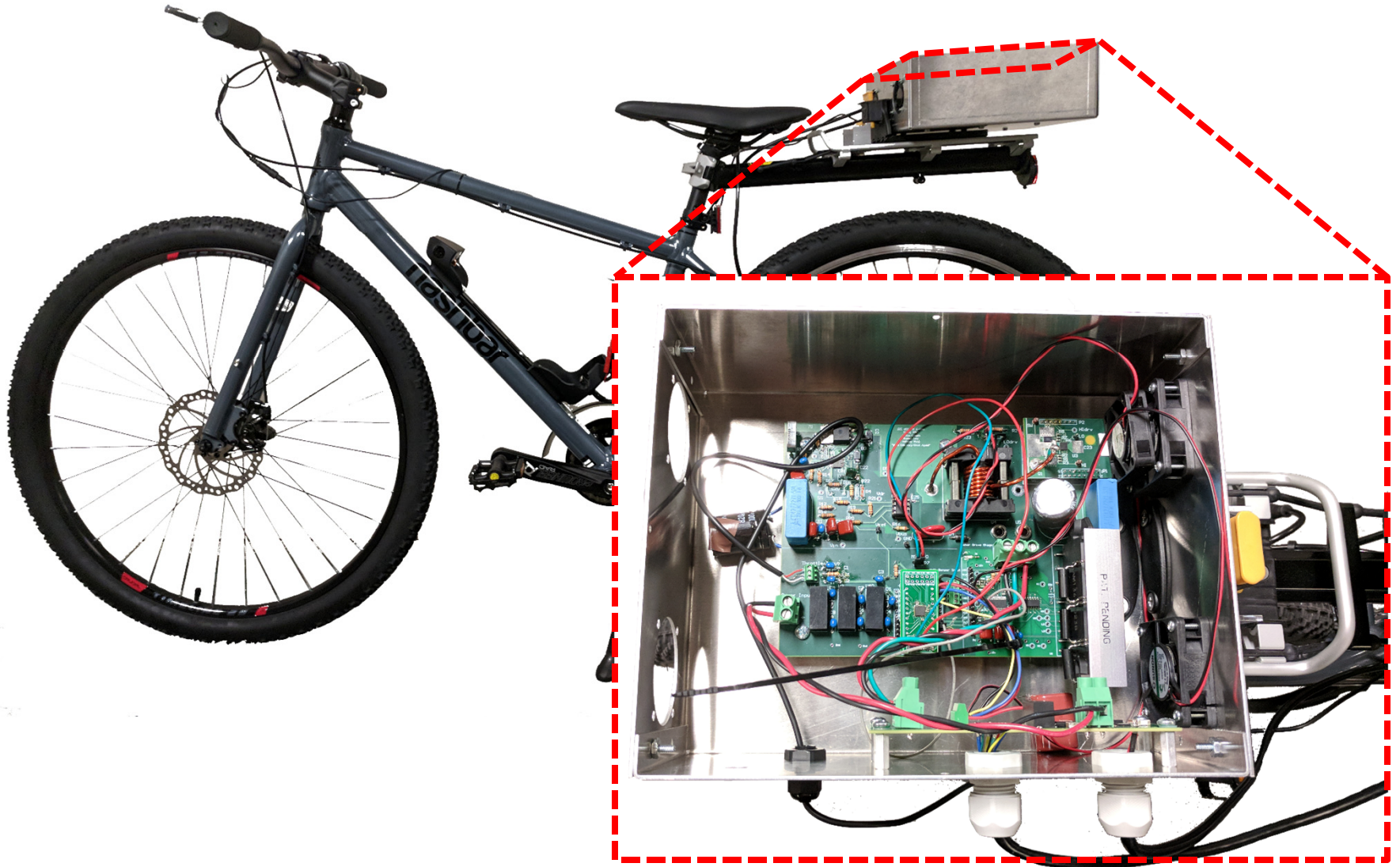
Lab 5: PCB Layout



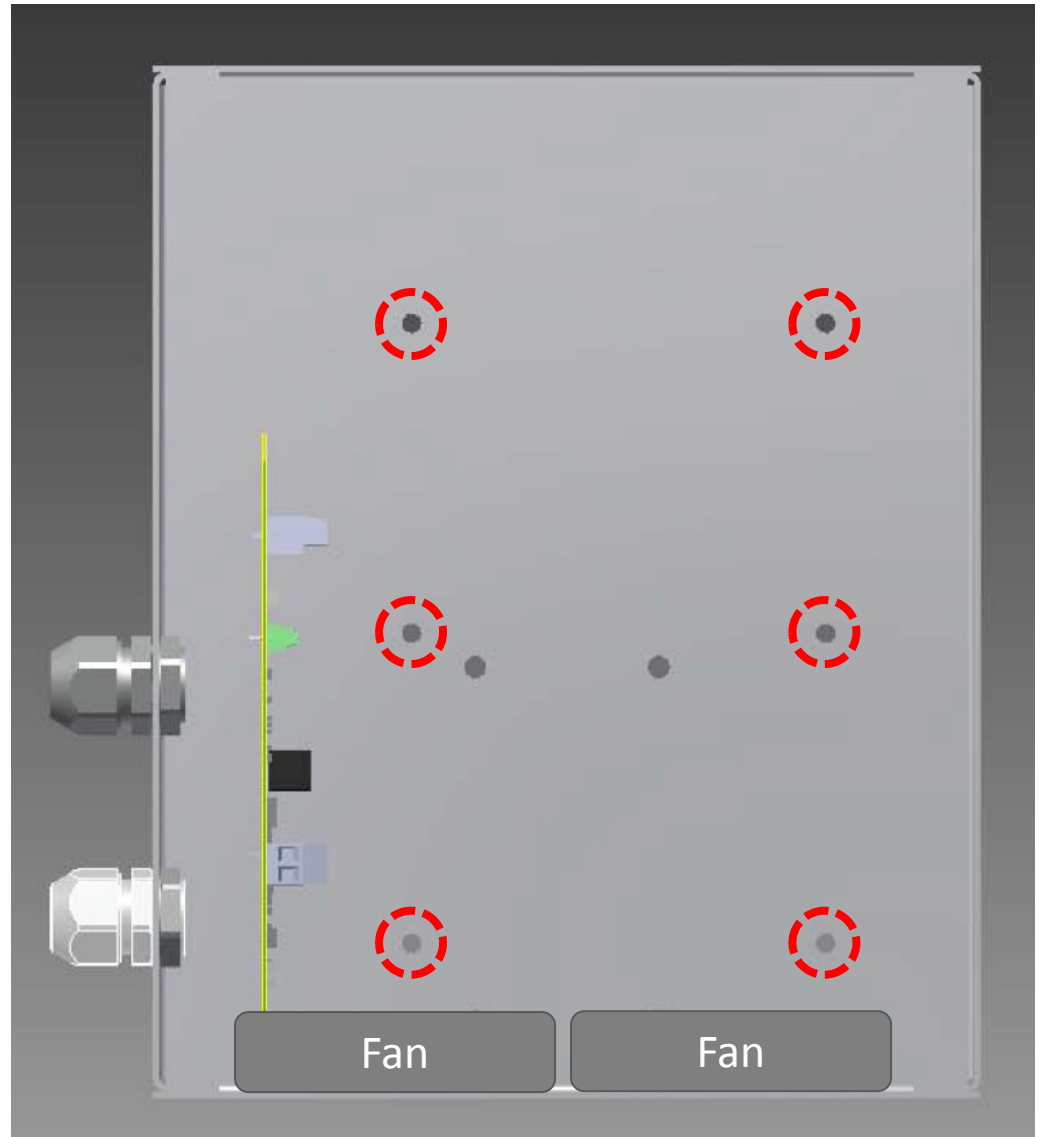
Design Modification

- You may order additional parts, at reasonable cost/benefit
 - Will need to provide a listing of parts from digikey with final Exp 5 files
 - May not exceed \$350 for parts and PCB
- Reuse components from lab kit where possible
- Use SMD ceramic, low ESR caps for power stage and gate drive decoupling

Circuit Enclosure



Circuit Enclosure - Mounting



Fans – 1 W each, need to be powered from your board

Circuit Connections

