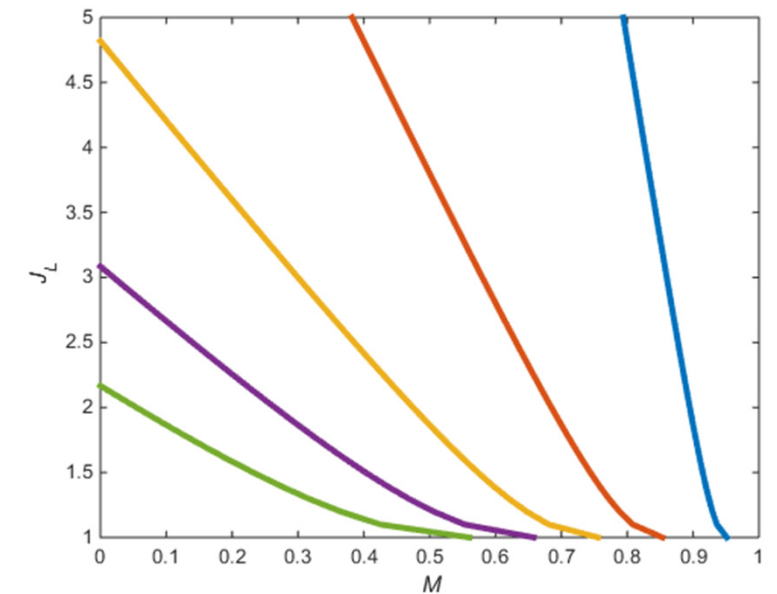
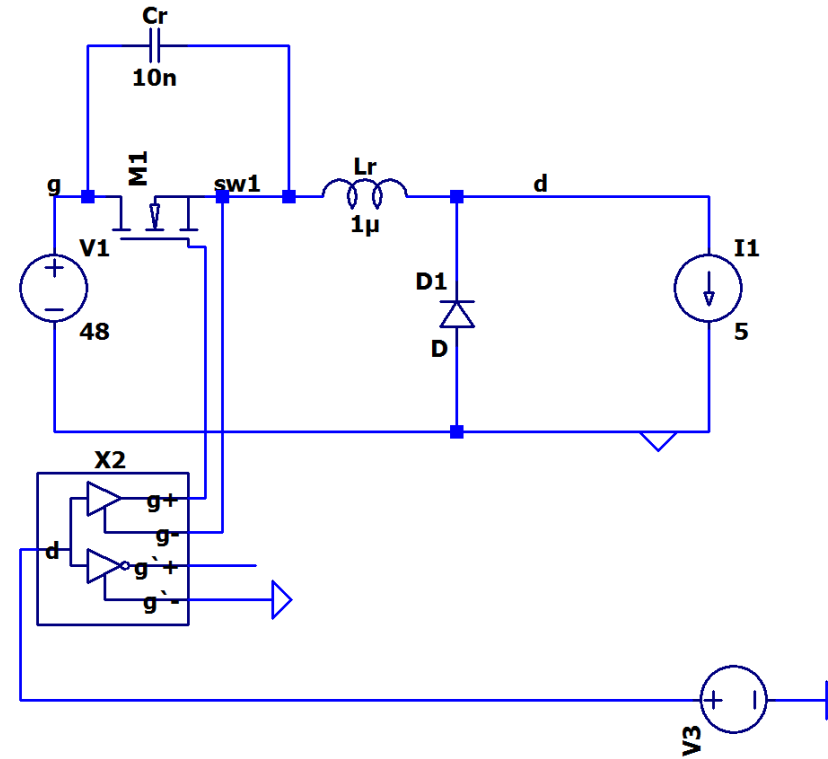


Complete Solution

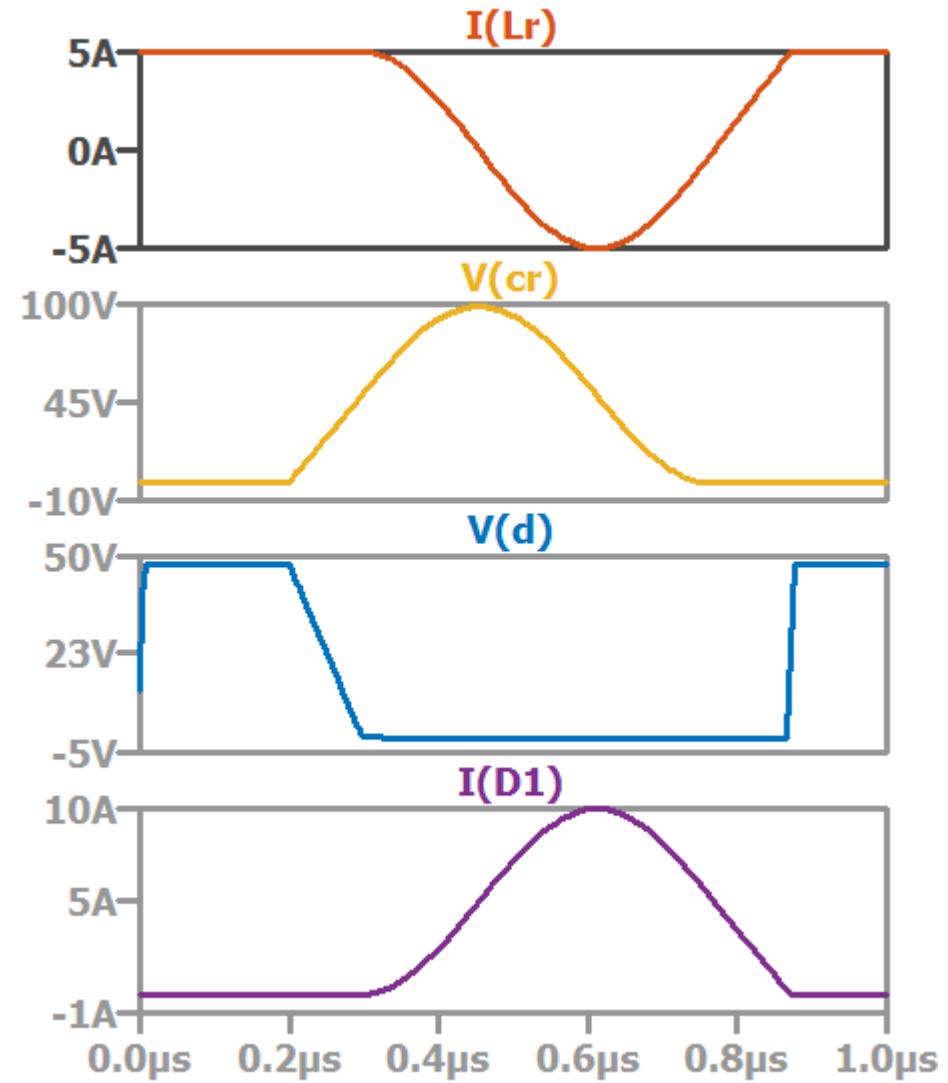
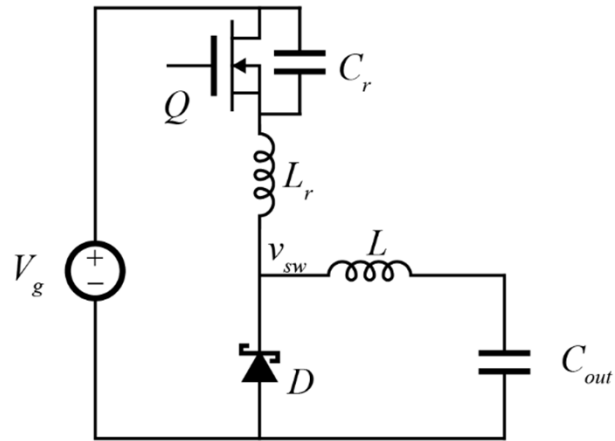


MOSFET Voltage Stresses

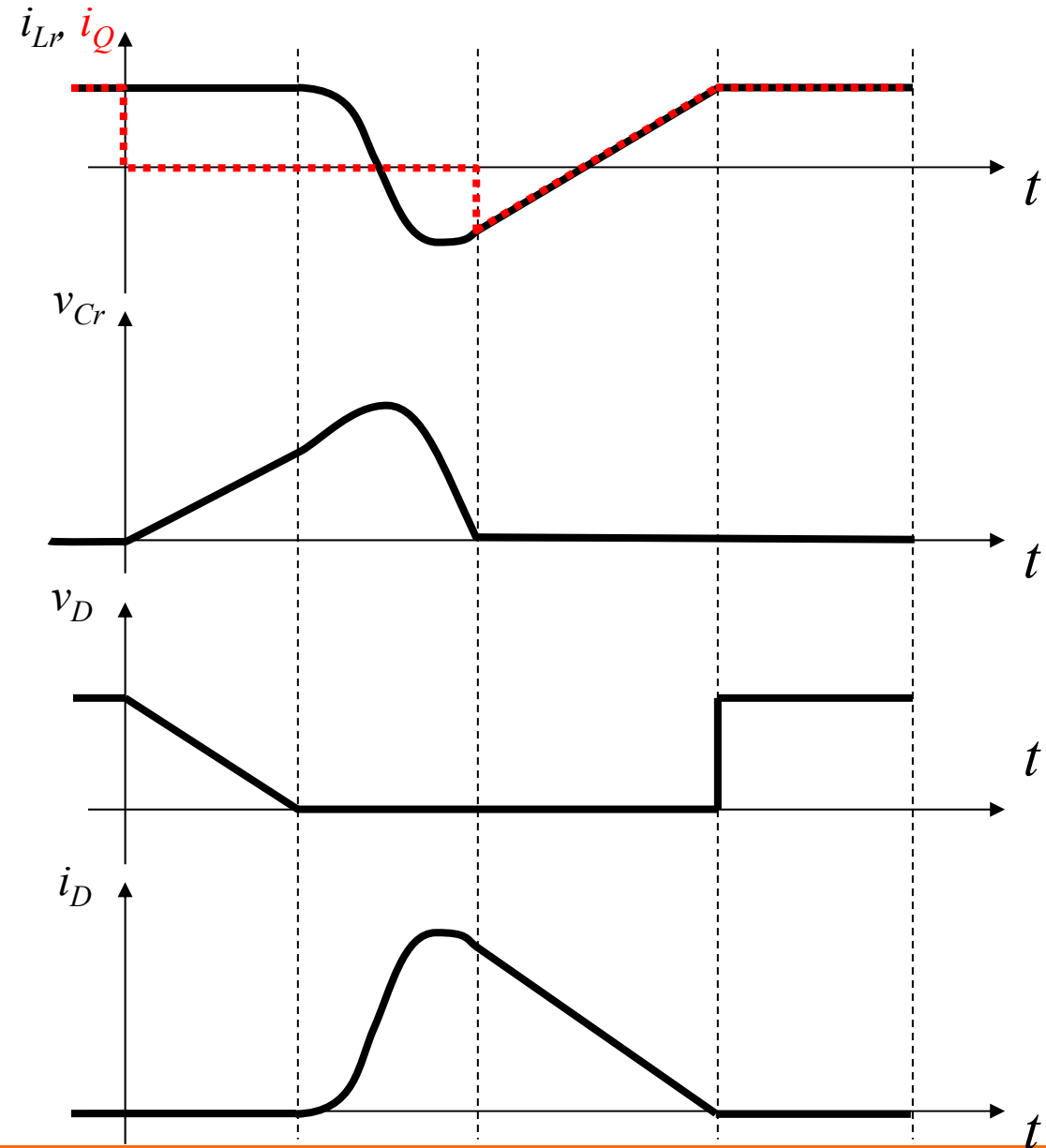
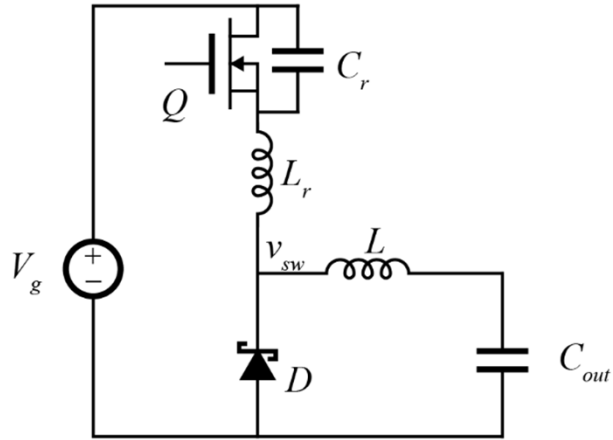
Test Circuit



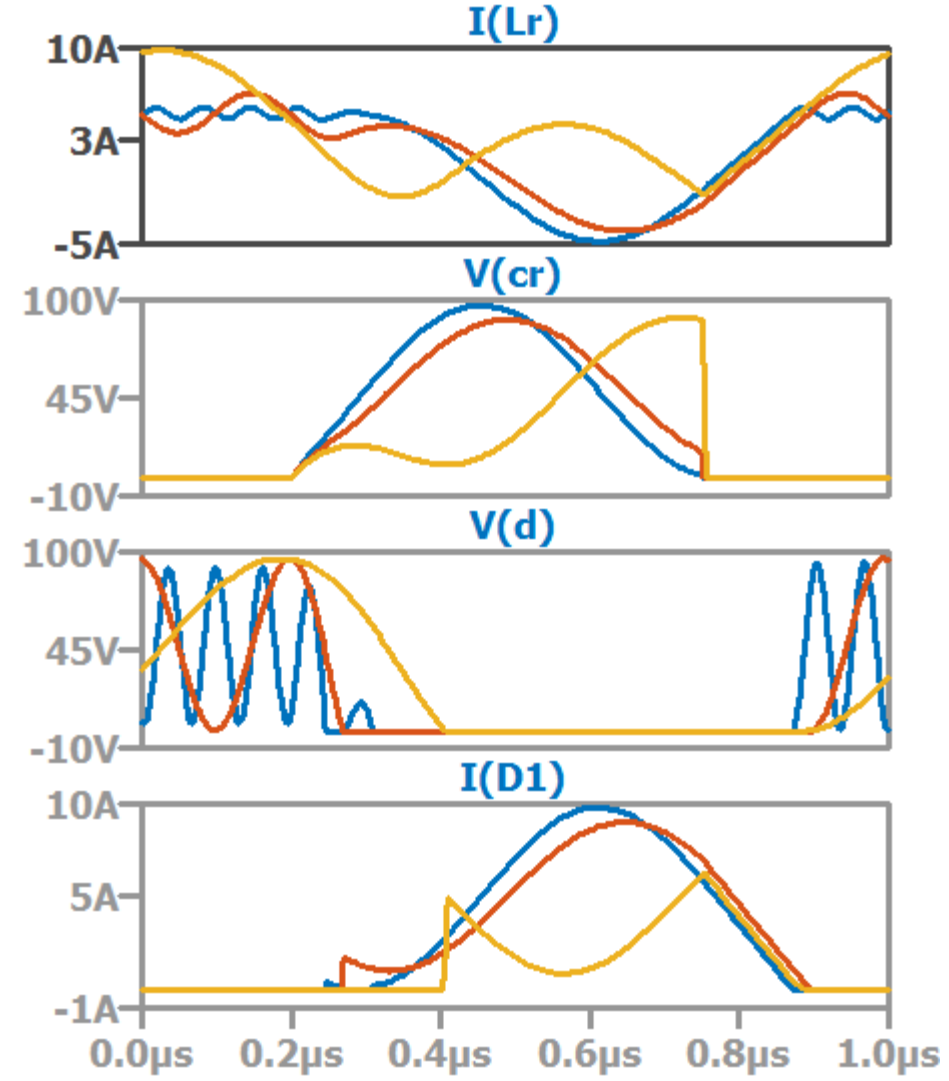
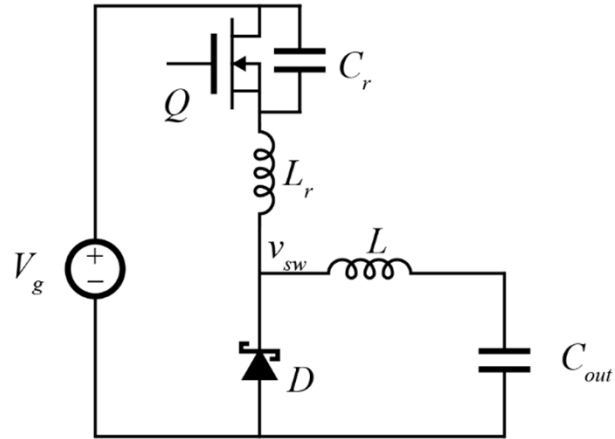
Simulation Results



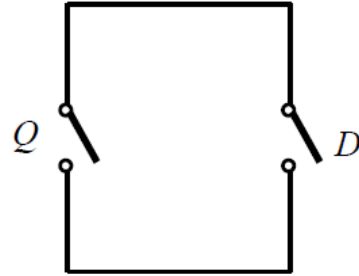
Diode Capacitance



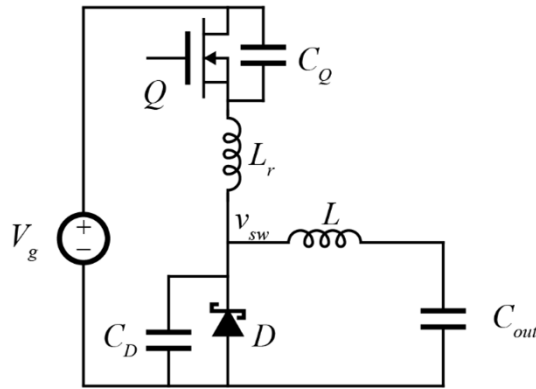
Simulation Results: Diode Capacitance



Wishlist: Multi-Resonant



ZVS-MR Buck



Operating Modes

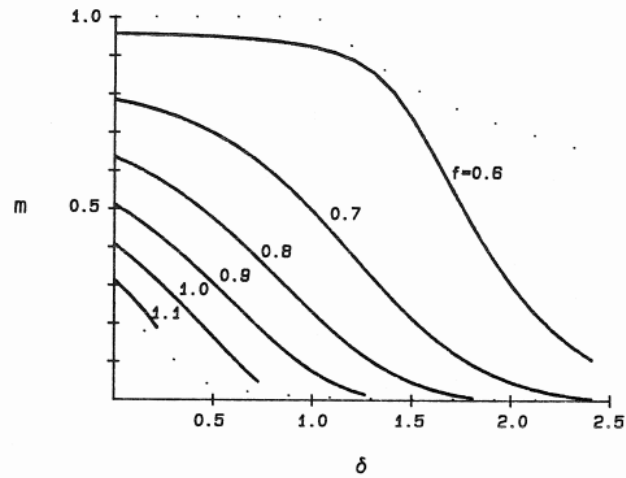


Figure 10.7: Load-to-output DC characteristics of a ZV-MR converter operating in modes $(I, II)_1$.

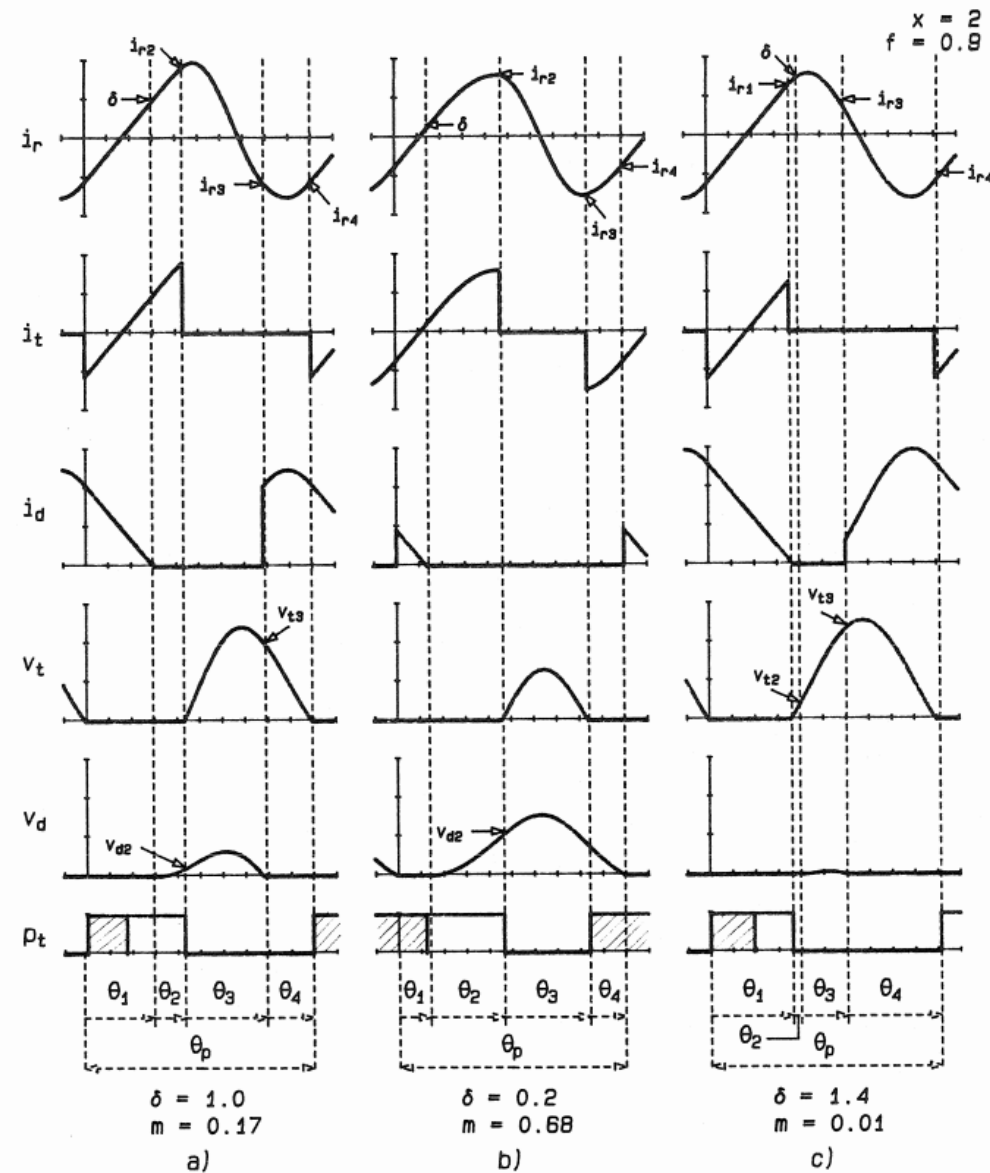
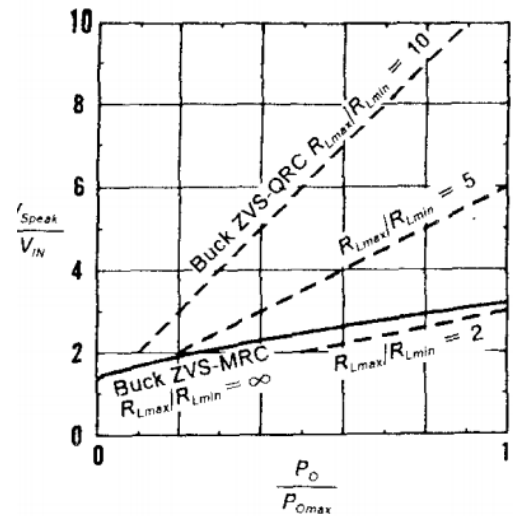


Figure 10.2: Typical waveforms for a ZV-MR converter operating in modes I_1 (a), II_1 (b) or III_1 (c).