

Student Identification Number _____

By entering my student identification number I affirm that I have neither given nor received help from anyone on this test.

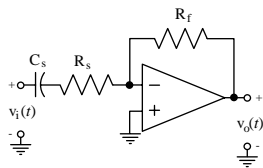
Solution of ECE 315 Test #13 F02

(Closed Book and Notes, 3 by 5 Card, Calculator, 20 minutes)

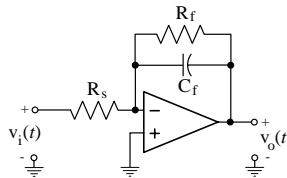
If any question or problem is incomplete, ambiguous or contradictory, explain why. If you are correct you will receive full credit on that question or problem.

Below are some active filters and some asymptotic magnitude Bode diagrams of frequency responses, $\left| \frac{V_o(j\omega)}{V_i(j\omega)} \right|$. For each filter find the magnitude Bode plot that matches it. If there is no match just write "none" (2 pts each).

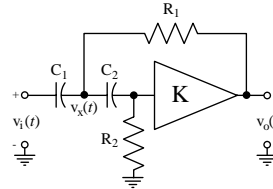
Single-Pole Highpass, C



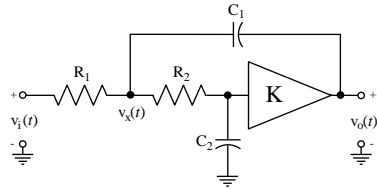
Single-Pole Lowpass, D



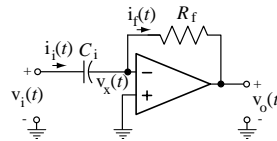
Two-Pole Highpass, A



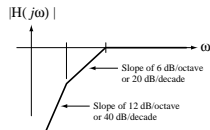
Two-Pole Lowpass, E



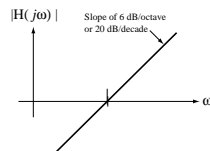
Differentiator, B



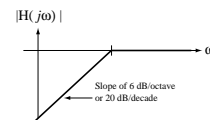
A



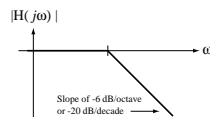
B



C



D



E

